



Boroughmuir
High School

S3 Parent and Carer Information Evening 2025

Kate Fraser
Head Teacher

Clive Hembury
Depute Head Teacher
S2 and S3

S3 Parent & Carer Information Evening - Sign in Form



Structure:
Welcome
S3 Curriculum
How to Help at Home
School Procedures and Updates
Pupil Support
Extra-Curricular and Wider Achievement
Questions





Boroughmuir
High School

To ensure a confident, nurturing and inclusive learning community where all achieve their true potential and embrace life's challenges.

Respectful * Inclusive * Resilient

Our **values** are our shared beliefs that help us make decisions, to know what is right and how we should act in our community:

Respectful – We value empathy, kindness, and consideration in every interaction, fostering an environment where every individual feels valued and heard.

Inclusive – We commit to equity, belonging, and unity, ensuring everyone has the opportunity to thrive and contribute in meaningful ways.

Resilient – We encourage perseverance, determination, and a growth mindset, empowering individuals to navigate challenges with confidence and optimism.

Improvement Priorities 2025-26

Teaching and Learning
Relationships
Wider Achievement



Website and App

Boroughmuir High School

Website Link - click here!



Google Play or App Store
Search for 'Boroughmuir High
School'.

Username: Boroughmuir

PIN: 0825

Opportunities for personal achievement

Interdisciplinary learning

The Curriculum

'the totality of all that is planned for children and young people throughout their education'

Ethos and life of the school as a community

Curriculum areas and subjects



Boroughmuir
High School

Pledges...

...by the time pupils leave Boroughmuir everyone will have experienced:

- Performing or presenting
- Outdoor learning
- Joining a club or team
- Lead or volunteered
- First Aid training
- Gaining 5+ academic qualifications
- Work experience

Respectful * Inclusive * Resilient



Boroughmuir
High School



Restart a Heart Live 2025
Wednesday October 1st

Whole school CPR training/refresher
BHS Community



S3 Curriculum Summary

A balanced course choice

8 main subjects


- Maths and English
- French, German or Mandarin
- Biology, Chemistry, Physics
- Geography, History, Modern Studies, Economics or RMPS
- 3 additional choices

Our aim is for pupils to gain a qualification in each of these subjects



| S3 Curriculum Summary | | | |
|---|-------------------------------|---|---|
| All study (3ppw) | All study | 3 x <i>Additional Subject</i> Choices (3ppw) | |
| English | PE (x2ppw) | Art & Design Biology Business Management Chemistry Computing Science Design & Manufacture Graphic Comm Drama Economics Geography | History Media Studies Modern Studies Music Music Technology Physical Education Photography Physics Practical Cookery Practical Woodwork RMPS Spanish |
| Maths | PSE (1ppw) | | |
| French or German, Mandarin or Languages for Life & Work | Health & Wellbeing HWB (1ppw) | | |
| Biology or Chemistry or Physics | | | |
| Geography or History or Modern Studies or Economics or RMPS | | | |
| | | | |

| S2 | S3/4 Subjects | S5 Subject Pathway |
|------------------|---|---|
| Art | Art & Design Photography | Art & Design Photography |
| Business | Business Management Economics Administration & IT | Business Management Business Skills Foundation Apprenticeship Economics Admin & IT |
| Craft and Design | Graphic Communication Design and Manufacture Engineering Science Woodworking | Graphic Communication Design and Manufacture Woodworking Furniture Making |
| Computing | Computing Science | Computing Science Computer Games Development, Digital Media Data Science |
| Drama | Drama | Drama |
| English | English Media Studies | English Media Studies Film and Media |
| Home Economics | Practical Cookery Health & Food Technology | Practical Cookery Health & Food Technology Hospitality |

| S2 |  S3/4 Subjects | S5 Subject Pathway |
|---------------------------|--|---|
| Maths | Mathematics Applications of Maths | Mathematics Applications of Maths (N5 or Higher) |
| Modern Languages | French, German Language for Life (N3/4) Mandarin Spanish | French, German Language for Life (N5) Mandarin Spanish |
| Music | Music (Performing) Music Technology | Music (Performing) |
| Physical Education | Physical Education | PE Sport & Exercise Leadership |
| Science | Biology Science & Health (Princes Trust Achieve Awards/Barrista) Chemistry Physics | Biology Human Biology Chemistry Physics |
| Social Subjects | Geography History Modern Studies RMPS | Geography History Modern Studies RMPS Philosophy |

| | Regi | 1 | 2 | Break | 3 | 4 | Lunch | 5 | 6 |
|------|--------------|-----------|-----------|-------|--|--------------------------------|-------|-----------|-----------|
| | 0830 | 0845-0940 | 0940-1035 | | 1055-1150 | 1150-1250 | | 1335-1430 | 1430-1530 |
| Mon | Registration | English | History | Break | Physics | Music | Lunch | Maths | French |
| Tue | | PE | PE | | Maths | Drama | | Chemistry | History |
| Wed | | Chemistry | French | | Physics | English | | Music | Drama |
| Thur | | French | Music | | Personal Social Education (PSE) | Health & Wellbeing (HWB) | | English | Chemistry |
| Fri | | Drama | History | | Maths | Physics | | | |

In addition to 8 subjects, the S3 curriculum contains:

Core PE – more personalisation and choice

Personal and Social Education (PSE)

Health and Wellbeing

- SQA Wider Achievement Awards
- S3 can achieve the RBV award (Religion, Beliefs and Values)
- 50% of the SQA Wellbeing Award.

YPI Project (Youth and Philanthropy Initiative)

P7 Leadership Projects





on Level from 2.1 → 5.1
achieving

S3 Working Levels

3.2/
3.3/4.3 - achieve

Level 7
(Advanced
Higher)

Level 6
(Higher, NPA, Foundation Apprenticeship)

Level 5 (National 5, NPA)

5.1

Level 4 (National 4, NPA)

4.1 → 4.2 → 4.3

Level 3

3.1 → 3.2 → 3.3

Level 2

2.1 → 2.2 → 2.3

Primary

S1

S2

S3

S4

S5

S6

Boroughmuir High School S1, S2, S3 Working Levels and Target Levels



Working Levels (WL) show your progress and achievement within each curriculum Level from 2.1 → 5.1

The number to the **left** of the decimal point shows the WL you are working towards achieving

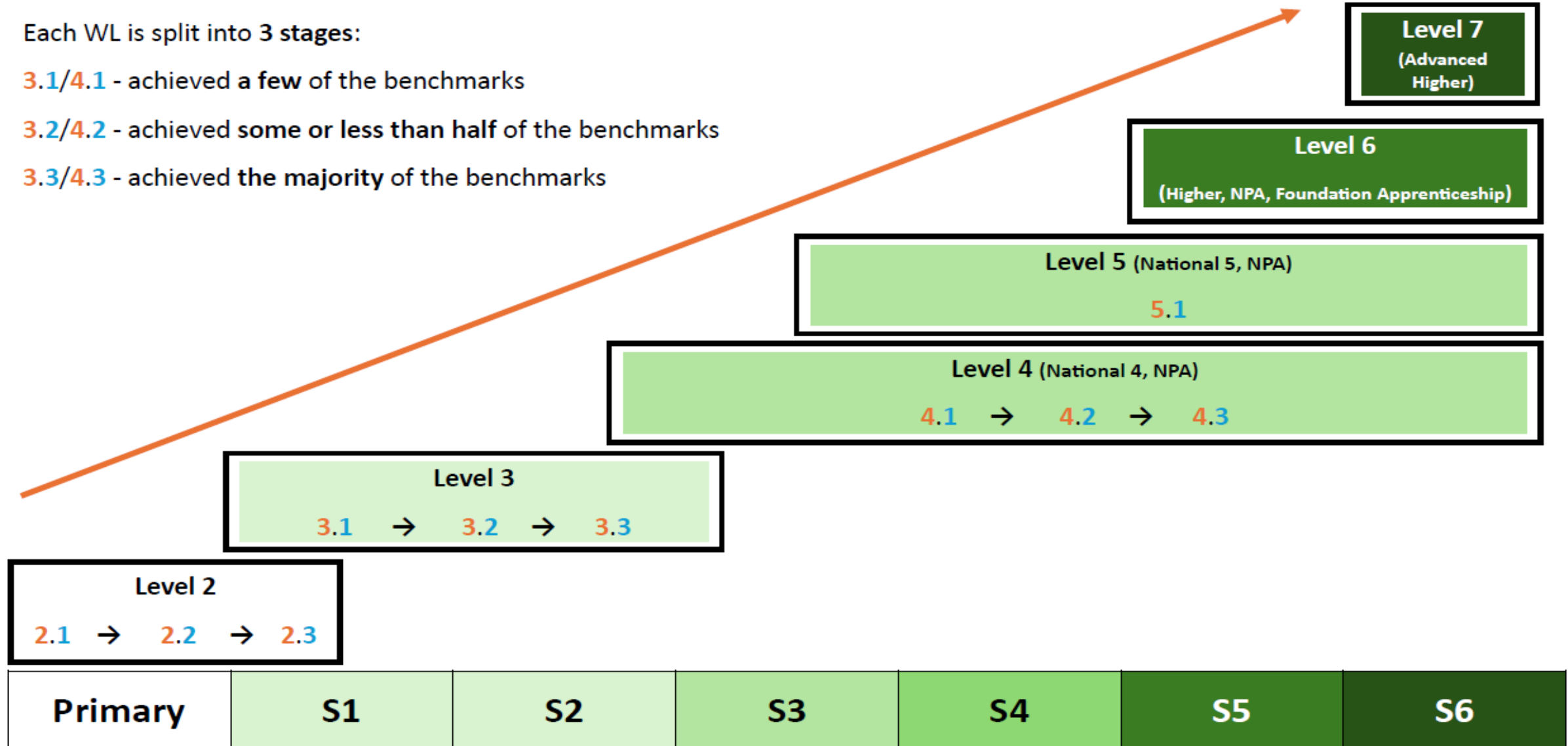
The number on the **right** of the decimal point shows your achievement through the WL

Each WL is split into 3 stages:

3.1/4.1 - achieved a **few** of the benchmarks

3.2/4.2 - achieved **some** or less than **half** of the benchmarks

3.3/4.3 - achieved the **majority** of the benchmarks



Exam Entry for National 5?

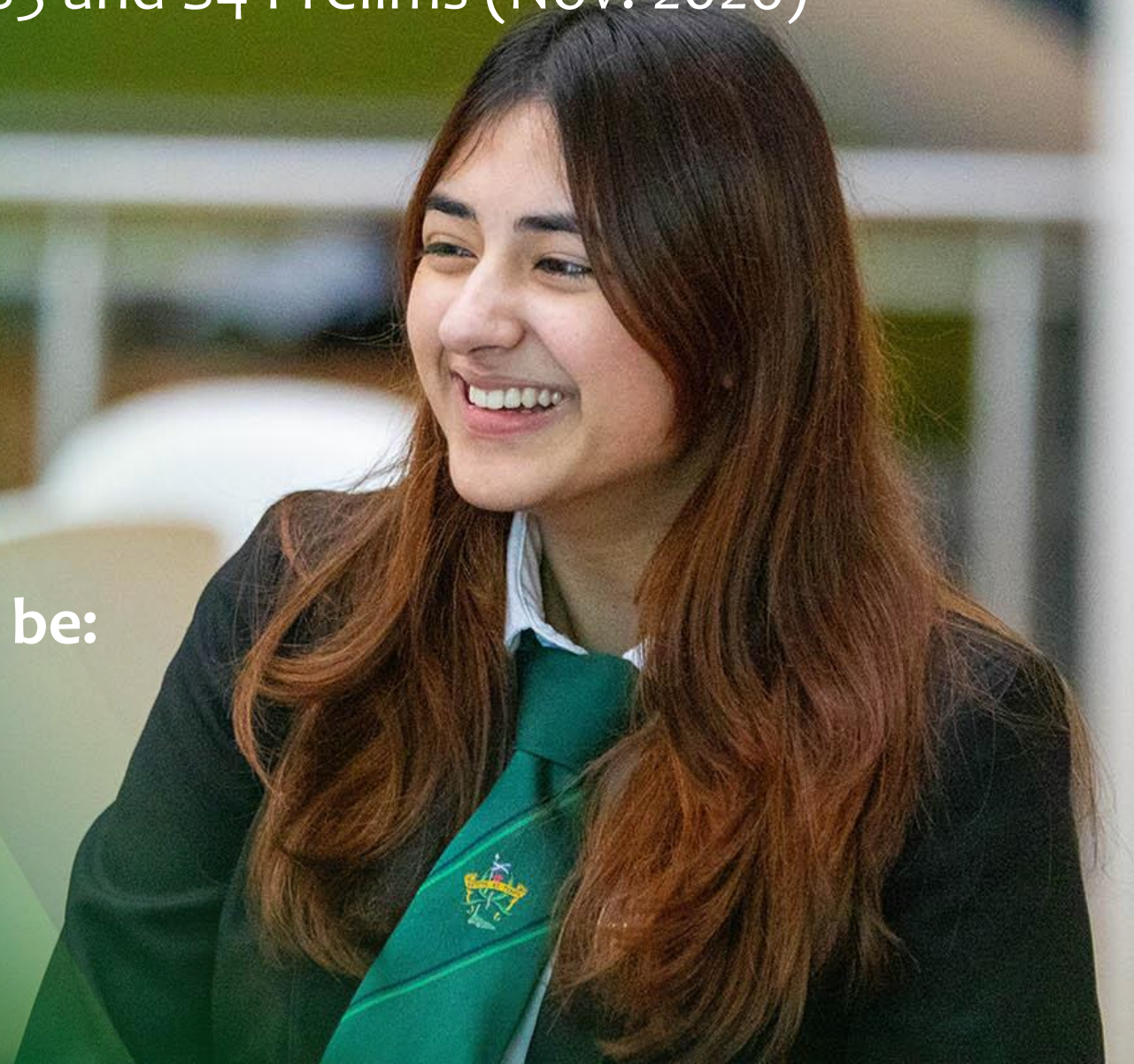
Final decisions based on progress in S3 and S4 Prelims (Nov. 2026)

General criteria for National 5 in S4:

- Prelim Grade A-D
- Passed N5 class assessments
- Tracking is *Meeting Expectations*
- Pupil commitment

Course entry levels and decision will be:

- Indicated on Tracking Reports
- Discussed with pupils
- Discussed with parent/carers
-



S3 Assessments

- After the Easter Holiday
- w/b Tue April 21st for approx. 3 weeks
- Opportunity to prepare for future S4 prelims (*practice exams*) in November 2026
- Completed in normal classes
- Cover much of the course *knowledge, understanding and skills* covered since from the start of S3.



[illegible]

Today

CH

Clive Hembury 16:51

BOR S3 Year Group - Class of 2027 S3 Assessments - updated for History (see back page)



S3 Assessments 2024 - updated 5.3.24.pdf

...

← Reply



Check you are looking at the correct schedule for your Register class

Match **your usual** timetable to the subjects shown in the list

e.g. if you have Music Technology on Monday P5 you will have your assessment on this day/period

Registration
3R1-3R5

Mon

1

2

3

4

5

6

w/b April 24

Art
Chem
Comp
DMan
Must
PE
Medi
Geo
Phys
P.Cook
RMPS

S3 Subject Assessment Information 2025

| Subject Name | Assessment Information |
|------------------------|--|
| Art and Design | Written assessment. Two questions. Q1 - Van Gogh and Picasso based on subject areas studied in class. This introduces the format that will later be part of the S4 prelim. (10 marks) Q2 - Picture question introducing prompts and statements (5 marks) |
| Biology | Unit 1 Cell Biology |
| Business Management | No assessment on the dates identified above. A Marketing Topic test will be completed prior to Easter holidays. Another assessment will be carried out late May/early June on Understanding Business/Marketing together. |
| Chemistry | Paper 1 - 35 marks - Covering the whole of 'Chemical Changes and Structure' unit. |
| Computing Science | Written assessment on web design and development, computer systems and database design and development. All classes will sit the assessment on 8 th May during class time. No assessment for Computing will take place on the dates identified above. |
| Design and Manufacture | Written assessment – Theory part of course covered to date |
| Drama | Written assessment - S3 whole course coverage to date |
| Economics | No assessment on the dates identified above. An End of Unit test prior to Easter |
| Engineering Science | Written assessment - S3 whole course coverage to date |
| English | Paper 1 – RUAE (20 marks) |
| Geography | All S3 topics – Population, Urban, Coasts and Glaciation. |
| Graphic Communication | Written assessment - All topics covered to date including CAD modelling and written theory |

Home Study and Revision

- Essential knowledge and skills required for each course
- Past Papers and answers are available ... a must for revision in S4!

Past Papers and Marking Instructions

Coursework

National 5 Chemistry

Chemistry

National 3

National 4

National 5

Higher

Adv Hig

Course Specification

This explains the overall structure of the Course, including its purpose and aims and information on the skills, knowledge and understanding that will be developed.





**PREPARE AND
REVISE AT
HOME AS
PART OF
HOMEWORK**



**PRACTICE
REVISION
TECHNIQUES**



**CLASS
TEACHERS,
SUPPORT FOR
LEARNING AND
PSE WILL BE
DISCUSSING
STUDY TOOLS
AND SKILLS**



**MAKE
REVISION
NOTES, MIND
MAPS AND
FLASH CARDS**



**HOMEWORK/
STUDY SUPPORT
WEDNESDAYS 1530-
1630**



**VARIOUS
SUBJECT STUDY
SUPPORT
SESSIONS AT
LUNCHTIME OR
AFTER SCHOOL.**



**YOU WILL GET
FEEDBACK ON S3
ASSESSMENTS**



**A REPORT WILL
BE PROVIDED IN
EARLY JUNE.**



Office 365

Classes will continue to use **Microsoft Office 365**

Teams and use this as our virtual platform for blending learning digitally and learning in school.

All classes have assigned Teams pages.

Many class tasks are uploaded onto OneNote and set as *Assignments* in Teams

Sharepoint pages contain revision material

S3 have a Year Group Team



OneNote



Microsoft Teams

How to help your child: iPads for organisation



iPads have replaced school diaries. Teachers are now using TEAMS to record deadlines. Students will be used to checking TEAMS / ASSIGNMENTS or CALENDAR to see their homeworks and other deadlines.



They can also use this to set their own alerts, for example for a music lesson or a club.



Families can help by having a weekly sit down with their child to check the iPad and to plan the week ahead.

iPads

Before bed...

Plug in and charge outside bedrooms

...same for phones

Regularly check for iPad software updates

Hide any old Teams



S3 Year Group Team – Class of 2029



Class of
2029

BOR S3 Year Group - Class of 2029

Home page
Class Notebook
Classwork
Assignments
Grades
Reflect
Insights



Lewis MacPherson 6/23 1:43 PM

Boroughmuir Chronicle - June edition

[The Boroughmuir Chronicle](#)

Welcome to the Boroughmuir Chronicle!

[Go to this Sway](#)



CH Reply

Last read



Katie Dunlop 8:38 AM

S1 - S3 Film Club

BOR S3 Year Group - Class of 2029 **S1 - S3 Film Club**

Bring your lunch to G08 (Media Room) on Monday lunchtime (Starting Monday 18th August) to sit and enjoy an amazing film. We will start with **Ferris Bueller's Day Off** but then I am open to suggestions. Any questions, see Miss Dunlop

 Start a post

New



Class Notebooks (OneNote)

Math Class Notebook

Home Insert Draw View

Calibri Light 20 **B** / U Heading1

Math Class Notebook

Chapter 1
Chapter 2
Chapter 3
Chapter 4
Chapter 5

Homework
Class Notes
Handouts
Quizzes

Chapter 1

Friday, May 17, 2013 11:24 AM

1) three times the quantity 2 plus a.
 $3 \times (2 + a)$

2) 8 less than the product of 5 and y.
 $5 \times y - 8$

~~3~~ 4 fewer than j.
 $j - 4$

~~4~~ $60 \div 2 \cdot 3 - 9$
 $30 \cdot 3 - 9$
 $90 - 9$
 81

~~5~~ $2[8 + (5 - 3)] - 8$
 $2[8 + 2] - 8$
 $2[10] - 8$
 $20 - 8$
 12

~~6~~ $2(6) + \frac{7+18}{3}$
 $12 + \frac{7+18}{3}$

Do NOT
USE an
X for
multiplication

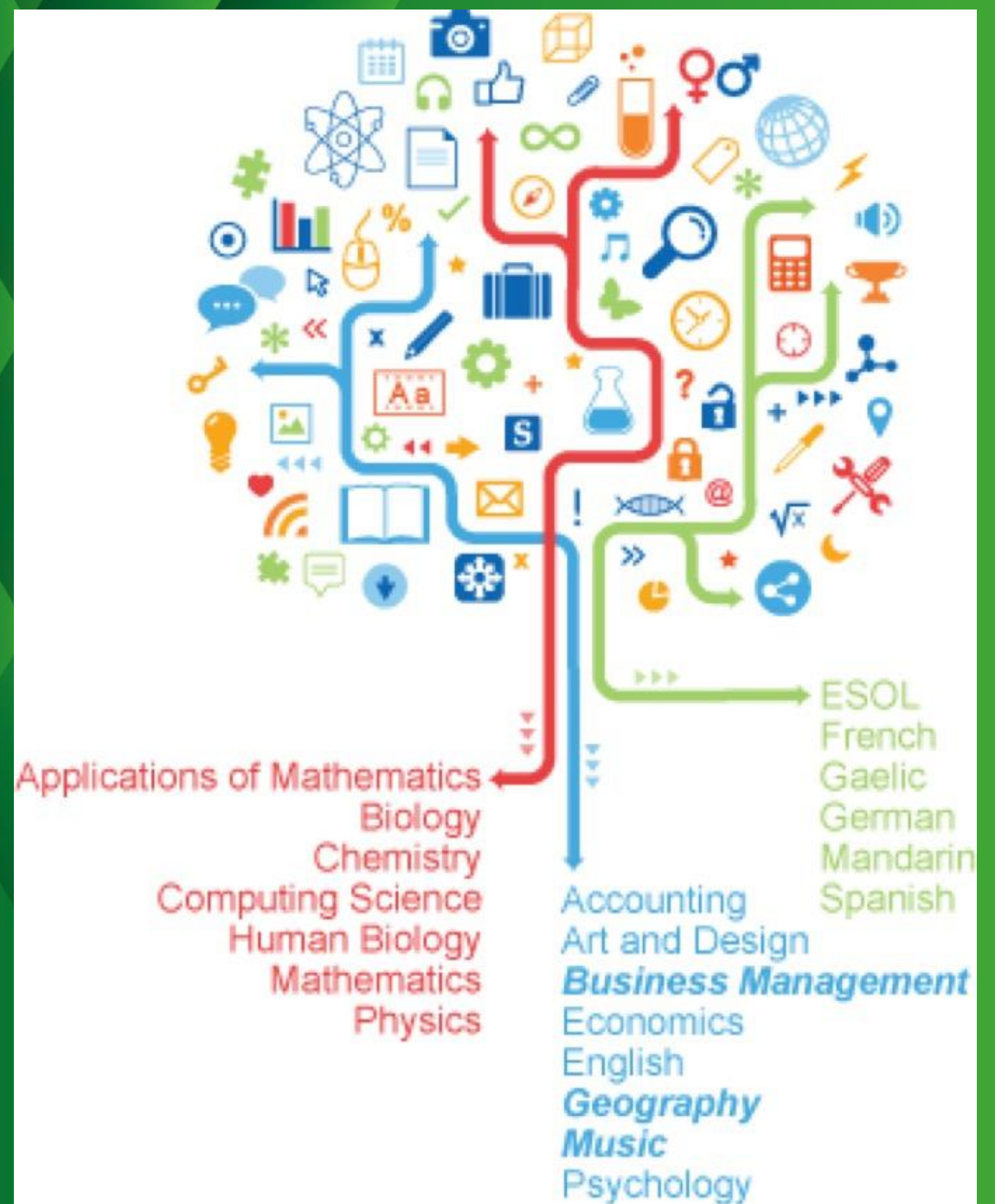
1, 62

Homework and Home Study



SCHOLAR courses offer over 42 online aligned to the SQA curriculum at National 5, Higher and Advanced Higher level.

Each pupil is provided with their own username (their SCN number) and a password.



ACHIEVE website

[Home](#)[My Courses ▾](#)[Learn](#)[Assess](#)[Self-evaluate](#)[Quizzer](#)[More #](#)

My Courses

[Add Course +](#)

National 5
Chemistry



Higher
Chemistry

Learn

Learn the key concepts
from your courses.

[Learn](#)

Assess

Test your course
knowledge.

[Assess](#)

Quizzer

Join a Quizzer.

[Join](#)

Self-evaluate

Traffic light your courses to
identify strengths and areas
for development.

[Self-evaluate](#)



Bitesize



Application of Maths



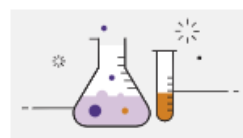
Art and Design



Biology



Business management



Chemistry



Computing Science



Dance



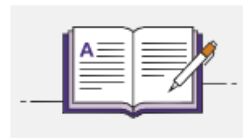
Design and manufacture



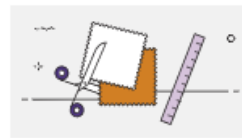
Drama



Engineering science



English



Fashion and textile technology



French



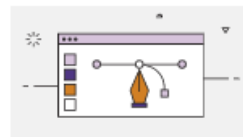
Gaelic (Learners)



Geography



German



Graphic communication



Health and food technology



History



Hospitality



Maths



Modern Languages



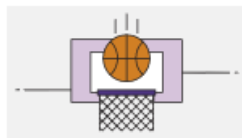
Modern Studies



Music



Music Technology



Physical Education



Physics



Religious, moral and philosophical studies



Spanish

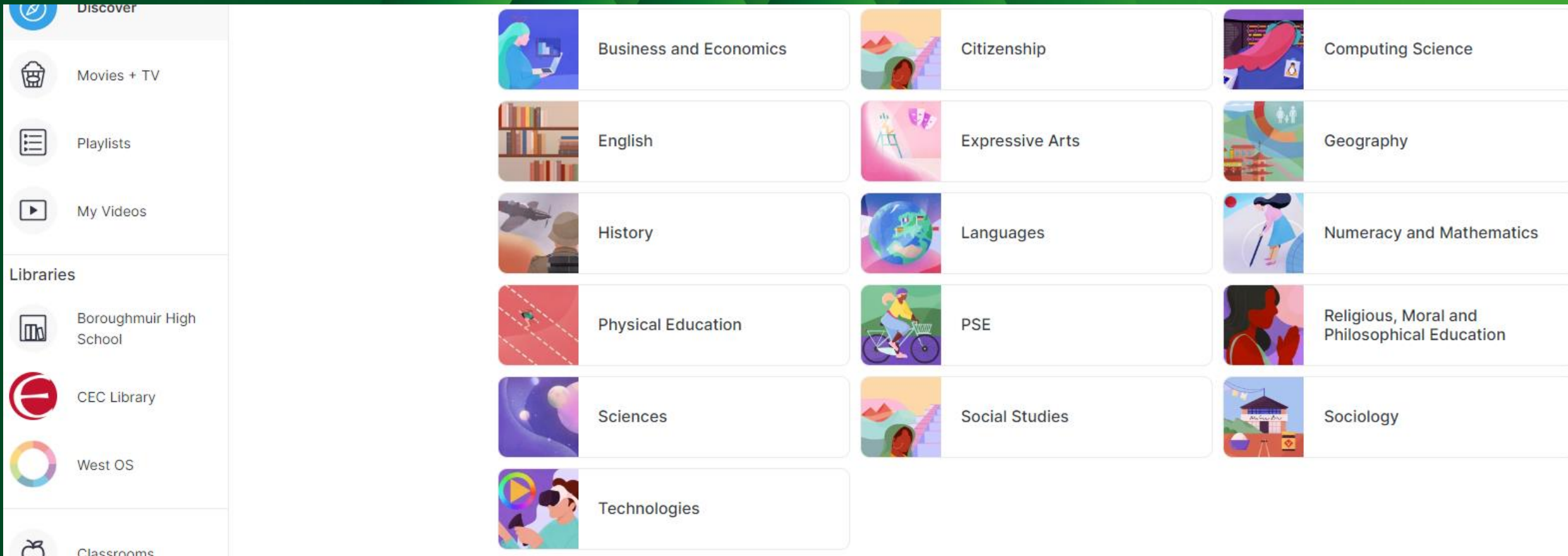


Technologies

ClickView



Sign in with their Office365 account details



School Procedures & Updates

Dress Code

Attendance & Punctuality

Break/Lunch

Water and Toilets

Mobile Phones

Behaviour

Dress Code

| Pupils in S1-S6 | |
|--|---|
| Personalisation and choice | All pupils must wear |
| Plain black jumper Or A school branded hoodie And/or A school blazer | A white shirt. A school tie. In S6 pupils are asked to wear the S6 tie. Plain black bottoms with no logo. Black (black and white if all black is not an option) shoes or trainers. |

Physical Education

Pupils should bring appropriate clothing for the activity they are working on. Activities can be indoor and outdoor so preparing for the weather is important.

PE clothes should be different from those worn to school. During PE lessons all jewellery must be removed and long hair tied back. We encourage families to send young people in with safety equipment, such as shin pads, for activities such as hockey and football, should they have them. We will try to provide for those who wish to use protective equipment but do not have access to any. This is not compulsory but encouraged.



Attendance & Punctuality

Registration 8.30-8.45am

Arrive after 8.45am?

- sign in at Reception
- 15 minute lunchtime detention

Late 3 or more times in a week?

- lunchtime detention

Not in class?

- must not be unsupervised
- Where to go?

Guidance, WBH, Head of Year, Medical Room...

Water

Please bring a full water bottle

Refill at Break and Lunch

Encouraged not to ask out to refill during learning time

Toilets

Encouraged to use toilets before
Registration, Break and Lunch.

During class time, use 'Out of
Class' QR code



Break and Lunch Queues

- early day is Wednesday



**“Do the
RIGHT thing”**



Litter

- use bins provided
- recycle
- don't litter

Corridors and Stairs



Our Community...Our Responsibility

Being allowed out of school at Break and Lunch comes with responsibilities. Misbehaviour will lose these privileges.



Mobile Phones and Headphones

Keep in bags

Phones should not be in trousers, hoodies, coats

Never have out in class

Use only before school, break or at lunch

Do not use in-between periods

Do not take to the toilet

Do not wear headphones in class

Phones will be confiscated

Collected at 3.30pm



Messaging & Notifications



Issues arising from messages must not cause issues in the school. This is pupils' responsibility to our community.

You may not be allowed to bring a phone into school or told to leave with Head of Year.

Set up 'do not disturb' to stop notifications



ParentPay (school Server)

Keep money on your ParentPay account

Set weekly reminders to check



Behaviour & Positive Relationships

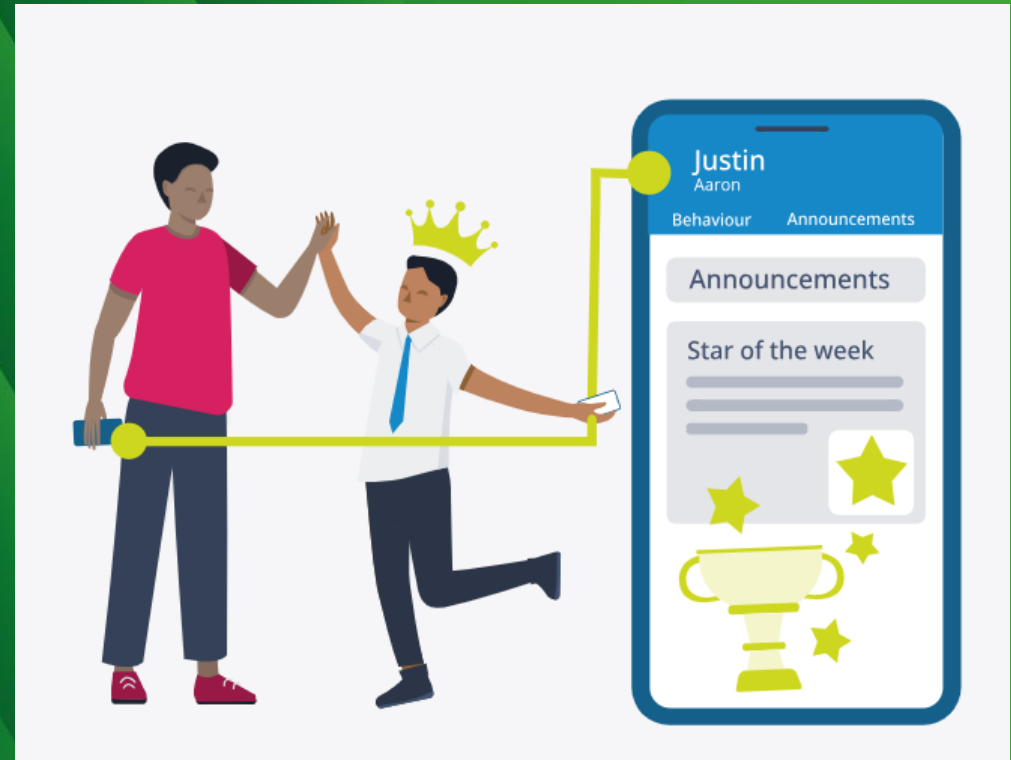
- teachers will ASK, TELL, INTERVENE
- fix and resolve issues
- accept sanctions, listen and explain
- disruption to others, you will be challenged
- behaviour is monitored



**We all aim to have positive relationships.
Value this and show respect to everyone.**

Class Charts App

- trial launch in 2025-26
- new Communication tool to help us to more quickly and easily share information with parents, pupils and teachers
- App based platform



Tracking and Reporting

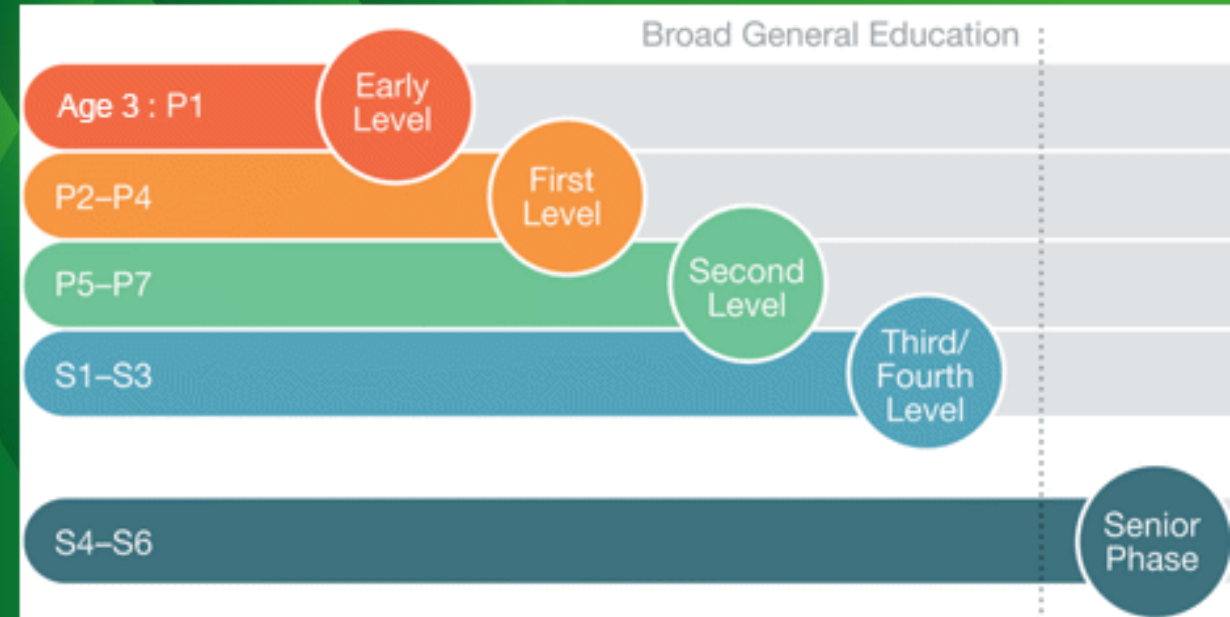
New City of Edinburgh system

Senior Phase (S4-6) N4,N5,H, AH

BGE (S1-3) Working Levels



- 4.1 A Few Benchmarks achieved
- 4.2 Some or less than half achieved
- 4.3 Majority of Benchmarks achieved



Boroughmuir High School S1, S2, S3 Working Levels and Target Levels



Working Levels (WL) show your progress and achievement within each curriculum Level from 2.1 → 5.1

The number to the **left** of the decimal point shows the WL you are working towards achieving

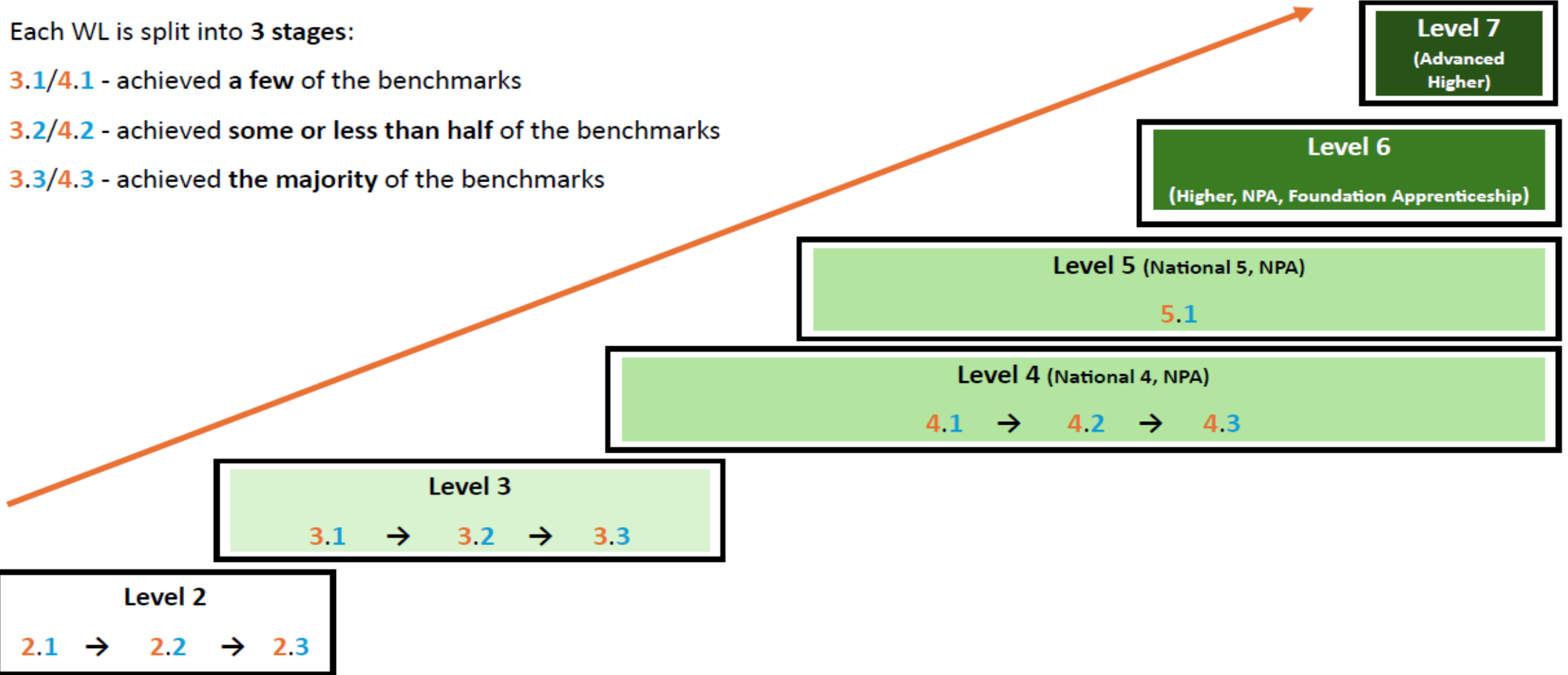
The number on the **right** of the decimal point shows your achievement through the WL

Each WL is split into 3 stages:

3.1/4.1 - achieved a **few** of the benchmarks

3.2/4.2 - achieved **some** or less than **half** of the benchmarks

3.3/4.3 - achieved the **majority** of the benchmarks



| Primary | S1 | S2 | S3 | S4 | S5 | S6 |
|---------|----|----|----|----|----|----|
|---------|----|----|----|----|----|----|

Working Level Examples

3.1 - working at **3rd Level** and **achieved a few** of the benchmarks

3.3 - working at **3rd Level** and has achieved the **majority** of the benchmarks

4.2 - working at **4th Level** and has achieved **some or less than half** of the benchmarks

Target Level Examples

3.2 - predicted to achieve **some or less than half** of the benchmarks at 3rd Level

4.1 - predicted to **achieve 3rd Level**

4.3 - predicted to achieve the **majority** of the benchmarks

5.1 - predicted to **achieve 4th Level**

Tracking Categories

| | |
|--|--|
| Progress | How well are you performing against national benchmarked standards and decided by the rate of progress made towards your Target Level (S1-3) or Target Grade (S4-6) |
| Effort | Are you consistently engaged in their learning? |
| Homework | Is homework completed to expected standards ? Are you completing the suggested level of independent home-study? |
| Behaviour | Is your behaviour meeting school expectations ? |
| Next Step for Improvement (NSI) | Used to help you to make improvements |

Tracking Level Descriptions

| Categories | Level | Progress | Effort | Homework | Behaviour |
|------------------------------|-------|---|---|--|---|
| Exceeding Expectations | 1 | Exceeding the rate of progress expected and should reach their target at the end of the year | Highly engaged in learning all the time, very conscientious and consistent high levels of effort | Always makes a very good attempt | Behaves very well at all times |
| Meeting Expectations | 2 | Should meet their target grade at the end of the academic year | Engaged in learning, completes tasks assigned to appropriate level | Makes a good attempt with all tasks | Behaves well most of the time |
| Not Yet Meeting Expectations | 3 | Not currently on track to meet their target grade based on the amount of progress made during the last tracking period | Not always engaged and effort levels are inconsistent | Inconsistent completing homework tasks | Inconsistent behaviour and some improvements required |

NSI – Next Steps for Improvement



| NSI Key Word & Description | | NSI Key Word & Description | | NSI Key Word & Description | |
|----------------------------|--|----------------------------|--|----------------------------|---|
| Office365 | Access online resources more consistently e.g. Teams, OneNote, BBC Bitesize, ClickView etc | Challenge | Challenge yourself to complete tasks or to attempt harder tasks | Organise | Improve organisation of materials |
| Revise | Regularly review class work (plan this once per week for each subject) | Classwork | Complete classwork to the best of your abilities | Engage | Engage more in class tasks |
| Feedback | Apply teacher feedback | Respect | Contribute and interact cooperatively with other pupils and teachers | Catch-up | Keep up to date with classwork, especially if you have been absent. Talk to your teacher to get help. |
| Homework Club | Attend Homework Club to help gain confidence with learning techniques | iPad | Be prepared with a fully charged iPad each day and/or use your iPad appropriately | Effort | Apply your best effort to class and homework |
| Homework | Complete homework on time or improve the quality of homework | Phone | Keep your phone off in your bag and on silent | Confidence | Have more confidence in your work |
| Help | Ask for help more regularly, especially before a deadline | Behaviour | Stop interrupting / speaking out of turn | Support | Access Study Support for help improve your organisation skills |
| Opinions | Support your opinions with reasons | Listen | Listen to instructions carefully | PE Kit | Ensure you have a full change of PE kit |
| Attendance | Improve punctuality and/or attendance | Strategies | Use your strategies to improve your focus and commitment in class | Deadlines | Ensure you meet hand in deadlines |
| EAL | EAL: continue to use strategies for acquiring English vocabulary | Planning | Use time management strategies such as calendars, reminders, lists to keep on top of your work | Exam Qu's | Practice exam type questions |
| SQA | Possible change of Working Level required | | | Practice | More sustained and regular practice in sport and music |

School Support

Examples of the types of support available:

In-Class

Pupil Support Leaders (PSLs) – Head of Houses

Support for Learning

Wellbeing Hub

Enhanced Support Provision

Counselling Service

External Partners – Educational Psychologist

Support for Parents and Carers

- Resources available e.g. Anxiety, Worries, Relaxation
- Raising Teen with Confidence

Pupil Support Leaders

Bruntsfield - Mrs Scherczer

Hartington - Miss Grant

Leamington - Miss Nisbet

Montpellier - Mr McIlwaine

Viewforth - Mr Brandie

Westhall - Mrs Wallace

Support for Learning (SfL)



Mrs Hall, Support for Learning Leader and the team of SfL Teachers and Pupil Support Assistants (PSAs):

The Support for Learning Department aims to develop and support a pupil's learning wherever a need is encountered or any barrier to learning is identified.

Homework Club - every Wednesday school library from 3.35 - 4.30. Support with homework, classwork and revision.

A quiet space for doing homework and you can access library resources and ICT. Refreshments are be provided!!

Pathways

- 1 – Majority of needs of pupils met in classroom by teacher.
- 2 – Involvement of Support for Learning Staff
- 3- Involvement of outside agencies/SFL staff/Wellbeing Hub/Enhanced Support



S3 – Link SfL teacher Mrs Kingsbury/Mrs Hall

- Where appropriate PSA support in class
- Targeted support with revision/study skills and homework for identified young people
- Maths Support – Thursday Morning Breakfast Club
- ICT Training – iPad Accessibility features
- Homework Club – Wednesday 3.40pm in the Library
- SFL Support for Assessments
- Attendance at Young Person Planning Meetings
- Update information that is shared with staff re additional support needs
- Assessing young people for literacy difficulties/dyslexia
- Collaborative work with Pupil Support Leaders and outside agencies to support young people's needs

I Just Want To Say...

Pupils can access support at all times through a number of ways for when they're feeling down or worried, or if they are concerned about someone else.

Talk Parents or Carers
Guidance Teacher, Year Heads, Class Teachers, School Counsellors

Scan Links to the school's '*I Just Want To Say...*' reporting system

Call/Text 07874 202 344



Protected Characteristics



I wanted to say...



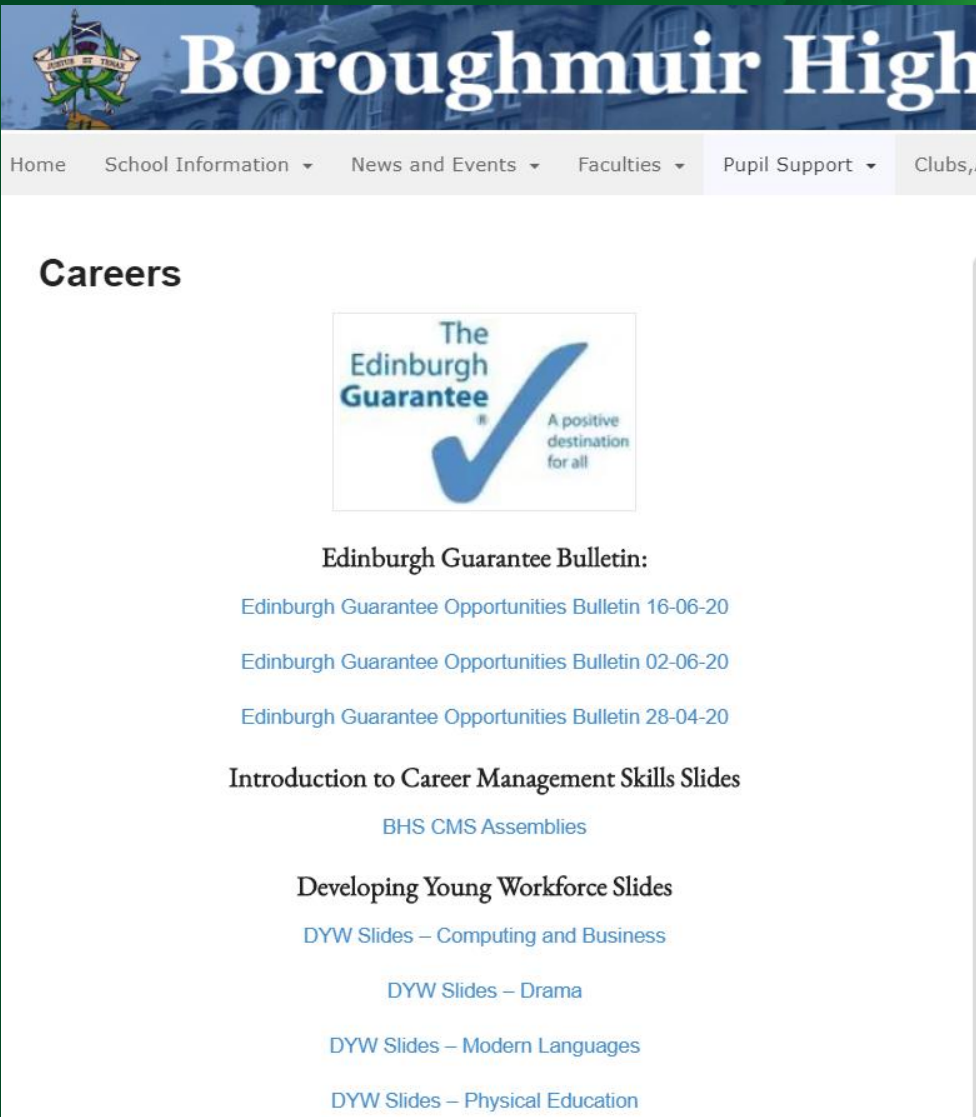
If you have something that you want to report or would like someone to talk to you this QR code can help.

You can use the code to report the following issues:

- Bullying
- Worries about your Health and wellbeing
- Worries about your friends and classmates
- Discrimination

Careers Advice - Our Careers Advisor is **Ms Cara Davidson**
Cara.Davidson@sds.co.uk appointments can be made by request
through the Pupil Support Leaders or by email.

**Skills
Development
Scotland**



The screenshot shows the Boroughmuir High School website. The header includes the school's crest and name, followed by a navigation menu with links to Home, School Information, News and Events, Faculties, Pupil Support, and Clubs. The main content area is titled 'Careers' and features a large blue checkmark graphic with the text 'The Edinburgh Guarantee' and 'A positive destination for all'. Below this, there are several links to Edinburgh Guarantee Opportunity Bulletins and a link to an Introduction to Career Management Skills Slides. At the bottom, there are links to Developing Young Workforce Slides for Computing and Business, Drama, Modern Languages, and Physical Education.

Boroughmuir High

Home School Information News and Events Faculties Pupil Support Clubs

Careers

The Edinburgh Guarantee
A positive destination for all

Edinburgh Guarantee Bulletin:

- [Edinburgh Guarantee Opportunities Bulletin 16-06-20](#)
- [Edinburgh Guarantee Opportunities Bulletin 02-06-20](#)
- [Edinburgh Guarantee Opportunities Bulletin 28-04-20](#)

Introduction to Career Management Skills Slides

[BHS CMS Assemblies](#)

Developing Young Workforce Slides

- [DYW Slides – Computing and Business](#)
- [DYW Slides – Drama](#)
- [DYW Slides – Modern Languages](#)
- [DYW Slides – Physical Education](#)

The Careers part of the website contains additional information including information as to how our subjects departments are developing skills for the young workforce.

My World of Work is a key source of careers information



The screenshot shows the My World of Work website. The header features the website's logo and name. Below the header, there is a section titled 'A tour of Scotland's online careers service' with three circular icons representing different career paths: a green icon with a stylized 'P', a red icon with a book, and a blue icon with a CV document.

My World of Work

A tour of Scotland's online careers service

[P](#) [Book](#) [CV](#)

SDS Service Offer

| Year Group | Offer |
|------------|---|
| S1 | Group session within PSE |
| S2 | Group session within PSE PLUS 1-2-1 decision making |
| S3 | Group session within PSE |
| S4 | Group session within PSE. Compulsory 1-2-1 for leavers, 1-2-1 requests through guidance. Drop-in sessions |

Raising Teens with Confidence

Promoting Mental & Emotional Wellbeing

6 week course for parents and carers
of teens

Ideas to help with:

- increasing independence
- developing confidence, security and resilience
- promoting emotional wellbeing

Raising Teens with Confidence

Promoting Mental & Emotional Wellbeing



Engage Boroughmuir Parent Council Careers Initiative

Help S1-S6 pupils connect with professionals.

3 events a year in
Sept, Feb/Mar and June
5 speakers from a range of fields

Ask questions in a small
group setting, information to
make subject choice easier



Explore a Variety of Career
Open to All!

Extra-Curricular Activity at B

Sports:

Various sports clubs and teams e.g. hockey, football, rugby, Table Tennis, Netball, Basketball, Ski Race, Volleyball, American Football, Running



Clubs & Societies:

Anti-Racism (IYS), HWB, Chess, Climate Change, STEM, Eco, Science, GSA, Chess, SU, Equalities, Pupil Voice, Debating, Music (Choir, Wind, Strings, Bagpipes), Medics, Film, Drama, Art, Languages, Creative Writing & Makar, Games, Enigma, Computing, Wargames, Board Games, Gardening, Christmas Carol



Tony Segall - Coordinator

SECONDARY SCHOOL NEWSPAPER AWARD

THE BOROUGHMUIR CHRONICLE BOROUGHMUIR HIGH SCHOOL



The Boroughmuir Chronicle (recently renamed from *The Boroughmuir Thistle*) has something for everyone, from wordsearches and recipes to LGBT+ newsletters and biographies for International Women's Day. We were very impressed to see this hard-hitting journalism alongside fun and creative segments. The editorial team clearly think about what their audience will enjoy. The newspaper is a big school effort, with even the school caretaker writing a column as Neil the Janitor in each issue! A very impressive achievement by the whole team – congratulations to you all!

The Boroughmuir Thistle

Issue 14
18/06/24



By: The Editor

- Strategy from Neil the Janitor • Neil's Place
- International Women's Day • Biography • Learning the Basics
- Teacher's Pet
- Boroughmuir's Thistle's History
- LGBT+ Month Newsletter
- Interview with Boroughmuir's Young Minister of the Year
- World's Best Book • Boroughmuir's Book • Book recommendations
- Boroughmuir - 10 Years Ago (and beyond)
- This Week in History
- Word Search
- Film Review • Article
- School News
- Boroughmuir's Future
- Spring Newsletters
- Recipe • Recipe



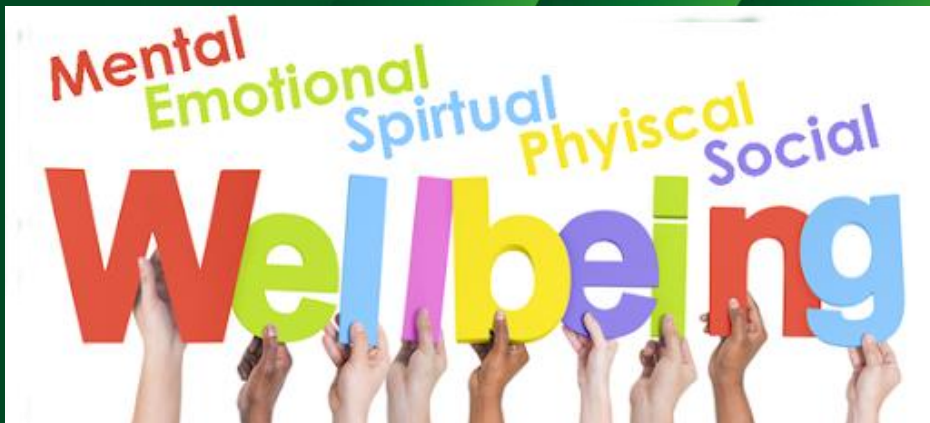
The Boroughmuir Chronicle team



Wellbeing Week 2026

Tuesday 23rd June – Thursday 25th June

Duke of Edinburgh – Bronze
or
Trips
or
Residentials



Duke of Edinburgh Award

A personal programme of activities in four sections:

- **Volunteering:** undertaking service to individuals or the community.
- **Physical:** improving in an area of sport, dance or fitness activities.
- **Skills:** developing practical and social skills and personal interests.
- **Expedition:** planning, training for and completion of an adventurous journey.

DofE programmes are at three levels:

Bronze (aged 14+)

Silver (aged 15+)

Gold (aged 16+)



BRONZE

Volunteering **3** months

Physical **3** months

Skills **3** months

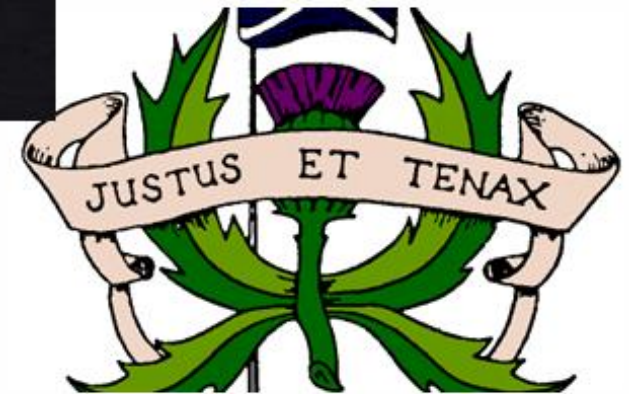
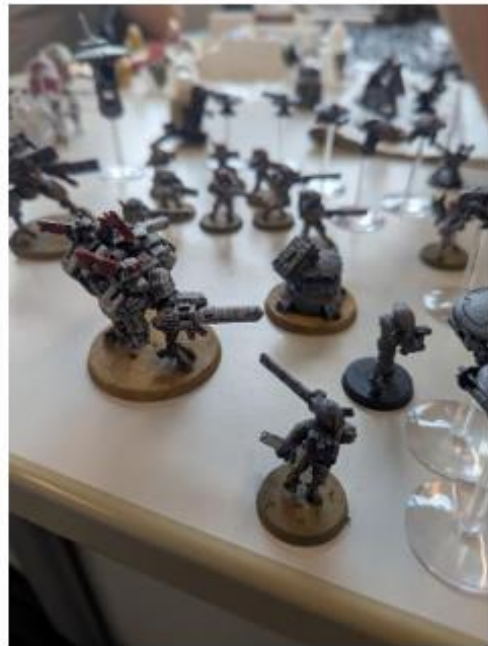
Expedition **2** days **1** night

PLUS a further 3 months in the Volunteering, Physical or Skills section.





I love
Strategy
Games &
Robotics





Iona





I Love London



Food Trail



Afternoon cooking at school

1

2

3



"Monday 23rd Pizza Making Workshop"

Hands on pizza making workshop with amazing tips/ techniques & toppings on how to make an American Style Pizza Base. Paul the owner was so helpful and passionate about his business in the grass market!



Monday 23rd Afternoon 1.30 onwards at Boroughmuir.



Monday 23rd



Breakfast at Loudens Choose from a delicious breakfast at



Key S3 Dates

Oct – Tracking 1

Dec – Tracking 2

12th March – S3 Parents' Evening

April/May – End of S3 Assessments

Early June – Tracking 3 including comments

Last week of term – Wellbeing Week

Any Questions?

