

Boroughmuir High School S3 Assessment Schedule 2025 (updated 25.3.25)



S3 Assessments start after the Easter Holiday and are scheduled over a number of weeks. They provide an important opportunity for S3s to prepare for future S4 prelims (*practice exams*) which usually take place in November 2025. Unlike the S4 prelims these S3 assessments are completed under the supervision of regular class teachers and are completed during normal class periods. S3 assessments typically cover much of the course *knowledge*, *understanding* and *skills* covered since from the start of S3.

The outline assessment schedule is shown below. These have been spread out over a few weeks in order that pupils do not have too many assessments on any one day. There is a slightly different schedule depending on which Registration groups; these either grouped as 3R1-3R5 or 3R6-3R10

Check you are looking at the correct schedule for your Register class

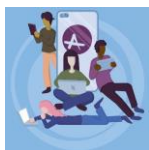
Registration 3R1-3R5	Mon						
w/b April 24		1	2	3	4	5	6
						Art Chem Comp DMan Must PE Medi Geo Phys P.Cook RMPS	

Match **your usual** timetable to the subjects shown in the list
e.g. if you have Music Technology on Monday P5 you will have your assessment on this day and period

Some details of each subject assessment are shown at the end. Class teachers will also provide additional advice and support in order to help prepare pupils.

Assessments and tasks are set against levels equivalent to the *Working Levels* of National 3, 4 and 5. S3 pupils are encouraged to prepare and revise at home as part of their homework. S3 Assessments are a valuable opportunity to practice **revision techniques**. Advice can be found within the TEAMS groups and within our [Subject Resources Summaries](#). These documents describe some of the different revision guides which are extremely useful for learners.

Also there are suggested websites to help with home-study, some of these include:



[Achieve](#) is a useful resource, sign up with your email address and password. When prompted, enter the **Boroughmuir High School code m7dEeGeE**. You can select all your courses, and access the *Learn, Assess and Self-evaluate* modules.

SCHOLAR - Online courses for Scotland's schools - <https://scholar.hw.ac.uk>

SCHOLAR offers online courses and support materials. Learners can login to SCHOLAR using their own username and password. Pupils can use the materials to study anytime, anywhere, in school or home. Materials contain a variety of activities, tests and quizzes that offer instant feedback. This allows pupils to practice and build confidence as they work their way through the learning materials.



Science and Mathematics				Languages				Business			
	N5	H	AH		N5	H	AH		N5	H	AH
Applications of Mathematics	✓	✓		English	✓	✓	✓	Accounting		✓	✓
Biology	✓	✓	✓	ESOL	✓	✓	**	Art and Design		✓	
Chemistry	✓	✓	✓	French	*	✓	✓	Business Management		✓	✓
Computing Science	✓	✓	✓	Gaelic	*	✓		Economics		✓	✓
Human Biology	**	✓	**	German	*	✓	✓	Psychology		✓	**
Mathematics	✓	✓	✓	Mandarin	✓						
Physics	✓	✓	✓	Spanish	*	✓	✓				



BBC [Bitesize](#) has a wide range of support to help you through your studies. With tips and advice to help with revision.



The SQA [subject pages](#) all contain information about the content of each course (listed in the *Course Specification* sections) and past exam papers are available.

Teachers from Support for Learning and Guidance/PSE will be discussing **study tools and skills** over the next few weeks. We will also be discussing this during S3 assemblies.

Personal and Social Education

It is encouraged for pupils to produce their own revision notes, mind maps and flash cards based on revision guides and their class work. Making these help pupils to remember key information and the S3 tests allow them to evaluate their revision *techniques* and refine their approaches for different subject, making improvements as necessary for future S4 assessments.



The **Homework/Study Support** group is on **Wednesdays 1530-1630** and help from teachers is available. **All S3 pupils are welcome to attend.**

The **Breakfast Numeracy Support** group is on **Thursdays** from **7.45 – 8.30 am** in room 2.14. It's a great opportunity to get help with your Maths homework and improve your numeracy skills. Get up early and don't miss out on support and a tasty croissant and drink!

There are various **subject study support sessions** at **lunchtime** or **after school**. A list of these is shown below and we would encourage your child to attend these if they have any questions or would like help in any area of their course.



We will try our best to provide pupils currently receiving additional support with similar support during these assessments. However the S4,5,6 SQA exams are taking place at the same time and as such our resources may be prioritised for those taking these exams .

Pupils will get feedback on their S3 assessments and they will evaluate their own performance looking at areas that they performed well in and areas for further practice. A Progress report with teacher comments will be provided in early June.

Registration Classes 3R1-3R5

3R1-3R5	Mon						Tues						Wed						Thur						Fri			
	1	2	3	4	5	6	1	2	3	4	5	6	1	2	3	4	5	6	1	2	3	4	5	6	1	2	3	4
w/b 21st April	Last Day of Easter Holidays																3D German Mandarin Listening	3G French German Mandarin Spanish Listening						3E French German Spanish Listening			English	
w/b 28th April				3H French Reading			3G French German Mandarin Spanish Reading	3E French German Spanish Reading					Maths Paper 1	3D German Mandarin Reading			3H French Listening		Maths Paper 2				Block F Biol Chem BusM Comp DMan GCom Geog Hist HFT Musi PCoo Phys					
w/b 5th May	Holiday						Holiday												Block C Art Biol BusM Dram Hist ModS PE PCoo Phys PrWo									
w/b 12th May					Block E Art Chem DMan GCom MusT PE PCoo Phys Scie				Block D Art Biol Chem Comp Geog Medi ModS PE								Block H Biol Chem Comp Dram Econ Geog Hist Musi Phys PrWo RMPS		Block G Biol Chem Econ ModS Mand Phys RMPS									

Registration Classes 3R6-3R10

3R6-3R10	Mon						Tues						Wed						Thur						Fri			
	1	2	3	4	5	6	1	2	3	4	5	6	1	2	3	4	5	6	1	2	3	4	5	6	1	2	3	4
w/b 21st April	Last Day of Easter Holidays															3D German Mandarin Listening	3G French German Mandarin Spanish Listening				English			3E French German Spanish Listening				
w/b 28th April				3H French Reading		Maths Paper 1	3G French German Mandarin Spanish Reading	3E French German Spanish Reading		Maths Paper 2						3D German Mandarin Reading		3H French Listening					Block F Biol Chem BusM Comp DMan GCom Geog Hist HFT Musi PCook Phys					
w/b 5th May	Holiday						Holiday												Block C Art Biol BusM Dram Hist ModS PE PCoo Phys PrWo									
w/b 12th May					Block E Art Chem DMan GCom MusT PE PCoo Phys Scie					Block D Art Biol Chem Comp Geog Medi ModS PE							Block H Biol Chem Comp Dram Econ Geog Hist Musi Phys PrWo RMPS		Block G Biol Chem Econ ModS Mand Phys RMPS									

S3 Subject Assessment Information 2025

Subject Name	Assessment Information
Art and Design	Written assessment. Two questions. Q1 - Van Gogh and Picasso based on subject areas studied in class. This introduces the format that will later be part of the S4 prelim. (10 marks) Q2 - Picture question introducing prompts and statements (5 marks)
Biology	Unit 1 Cell Biology, Producing new cells from Unit 2, Key areas 1 and 2 from Unit 3
Business Management	No assessment on the dates identified above. A Marketing Topic test will be completed prior to Easter holidays. Another assessment will be carried out late May/early June on Understanding Business/Marketing together.
Chemistry	Paper 1 - 35 marks - Covering the whole of 'Chemical Changes and Structure' unit.
Computing Science	Written assessment on web design and development, computer systems and database design and development. All classes will sit the assessment on 8 th May during class time. No assessment for Computing will take place on the dates identified above.
Design and Manufacture	Written assessment – Theory part of course covered to date
Drama	Written assessment - S3 whole course coverage to date
Economics	No assessment on the dates identified above. An End of Unit test prior to Easter
Engineering Science	Written assessment - S3 whole course coverage to date
English	Paper 1 – RUAЕ (20 marks)
Geography	All S3 topics – Population, Urban, Coasts and Glaciation.
Graphic Communication	Written assessment - All topics covered to date including CAD modelling and written theory
History	Scots and WW1 and a small section on Slave Trade
Languages (French / German / Mandarin / Spanish)	Part 1 Listening assessments Part 2 Reading assessments Whole S3 course covered over both parts
Maths	Nat 4/ Nat 5 Mathematics: 1 – Non-calculator questions on whole S3 course content 2 – Calculator questions on whole S3 course content Nat 3/ Nat 4 Applications of Mathematics: 1 – Non-calculator questions on whole S3 course content 2 – Calculator questions on whole S3 course content
Media	Assessed on their knowledge of the key aspects of media. This will include Categories, Language, Narrative and Representation
Modern Studies	Unit Assessment for either Crime & the Law or Democracy in the UK (tbc)
Music	Listening assessment – S3 whole course coverage to date Practical assessment – this will take place in class time and a performance to be given on both instruments
Physical Education	Written 'knowledge check': Factors Impacting Performance and the Personal Development Plan.
Physics	Motion and Forces, Electricity and Waves and the Electromagnetic Spectrum
Practical Cookery	Unit 1 Cookery Skills and Processes- Safe & Hygienic Working Practices, Food Preparation Techniques- Equipment and skills, Garnishing and decorating dishes. Unit 1 Understanding and Using Ingredients-Recipe Adaptation around Current Dietary Advice, Characteristics and Storage of ingredients. Practical Assessment dish tbc
RMPS	World Religion- Hinduism; Morality and Medicine; Morality and Conflict: Philosophical Questions- <i>Does God exist?</i>