

# Boroughmuir High School

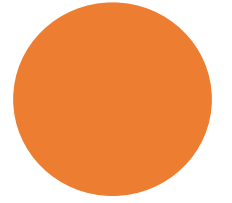
## S2 Parents' Information Evening

### Jan. 2024



# Our Vision

To ensure a confident,  
nurturing & inclusive  
learning community  
where ALL achieve  
their true potential &  
embrace life's  
challenges



# Content

Head Teacher Welcome

S3 Curriculum

Course Choice Process

Mathematics and Applications of Maths

SCQF Framework

Opportunities for Wider Achievement

Ethos and Life of the School including Support

Questions

**Opportunities for personal achievement**

**Interdisciplinary learning**

**The Curriculum**

'the totality of all that is planned for children and young people throughout their education'

**Ethos and life of the school as a community**

**Curriculum areas and subjects**

**Opportunities for personal achievement**

**Interdisciplinary learning**

**The Curriculum**  
'the totality of all that is planned  
for children and young people  
throughout their  
education'

**Ethos and life of the  
school as a community**

**Curriculum areas  
and subjects**

# Key Dates & Deadlines

- Indicative / provisional choices requested by the end of the February Holidays 19.2.24
- **Final choices by Monday 26<sup>th</sup> February when the website closes**
- Further requests sent to [coursechoice@boroughmuir.edin.sch.uk](mailto:coursechoice@boroughmuir.edin.sch.uk)



# Boroughmuir High School: S1-3 Curriculum & Courses Summary

## S1 and S2 CfE Level 3 Core Curriculum

English x4 ppw  
Mathematics x 4ppw

Science x3ppw  
Modern Languages x 3ppw  
- S1 French **and** German or Mandarin  
- S2 French **or** German or Mandarin

Physical Education x 2ppw

Art and Design  
Business Education  
Computing Science  
Craft and Design (D&E)  
Drama  
Geography  
Health and Food Technology (HFT)  
History  
Modern Studies  
Music  
Personal and Social Education (PSE)  
Religious, Moral and Philosophical  
Studies (RMPS)

1ppw unless stated (ppw = periods per wee)



## S3 CfE Level 4 and 5 – all choose 8 subjects (3ppw). All must study English & Maths, Modern Language, Science & Social Subject

Administration and IT  
Art & Design  
Biology  
Business Management  
Chemistry  
Computing Science  
Design & Manufacture  
Graphic Communication  
Drama  
Economics – *N5 only*  
English  
French  
Geography  
German  
Health & Food Technology  
History

Mathematics  
- *Applications of Maths*  
- *Mathematics*

Mandarin  
Media Studies  
Modern Studies  
Music  
Physical Education  
Physics  
Practical Cookery  
Practical Woodwork  
RMPS  
Science / Princes Trust Award – *Level 3/4*  
Spanish

## S3 Core Curriculum

- PE (Physical Education) 2ppw
- PSE (Personal & Social Education – with Heads of Houses/Pupil Support Leaders) 1ppw
- HWB (Health & Well Being) including Wider Achievement Awards in Health & Wellbeing, Religion, Belief & Values (1ppw)

S2	S3/4 Subject Options	S5 Subject Pathway
Art	Art & Design	Art & Design Photography
Business	Business Management Economics Admin & IT	Business Management Economics Admin & IT
Craft and Design	Graphic Communication Design and Manufacture Woodworking N4/5, N5	Graphic Communication Design and Manufacture Woodworking Furniture Making
Computing	Computing Science	Computing Science Computer Games Development Digital Media Data Science
Drama	Drama	Drama
English	English Media Studies	English Media Studies Film and Media
Home Economics	Practical Cookery Health & Food Technology	Practical Cookery Health & Food Technology Hospitality (Skills for Work)

Subject	S3/4 Subject Options	S5 Subject Pathway
Maths	Mathematics Applications of Maths	Mathematics (N5 or Higher) Applications of Maths (N5 or Higher)
Modern Languages	French German Language for Life (N3/4) Mandarin Spanish	French German  Mandarin Spanish
Music	Music Music Technology	Music
Physical Education	Physical Education	PE Sport & Exercise Leadership
Science	Biology Science & Health N4 ( <i>Princes Trust /Barrista</i> ) Chemistry Physics	Biology N5 or H Human Biology  Chemistry Physics
Social Subjects	Geography History Modern Studies RMPS	Geography History Modern Studies RMPS Philosophy

# Course Choice Process

## BOROUGHMUIR

## HIGH SCHOOL



### S3/4 Future Choices

### INFORMATION BOOKLET

## Contents

<a href="#">Introduction</a>	<a href="#">Page 3</a>
<a href="#">Curriculum for Excellence</a>	<a href="#">Page 4/5</a>
<a href="#">S3/4 Course choice process – Support for Pupils</a>	<a href="#">Page 6</a>
<a href="#">S3/4 Course Choice Sheet</a>	<a href="#">Page 7</a>
<a href="#">S3/4 Course Choice Process</a>	<a href="#">Page 8</a>

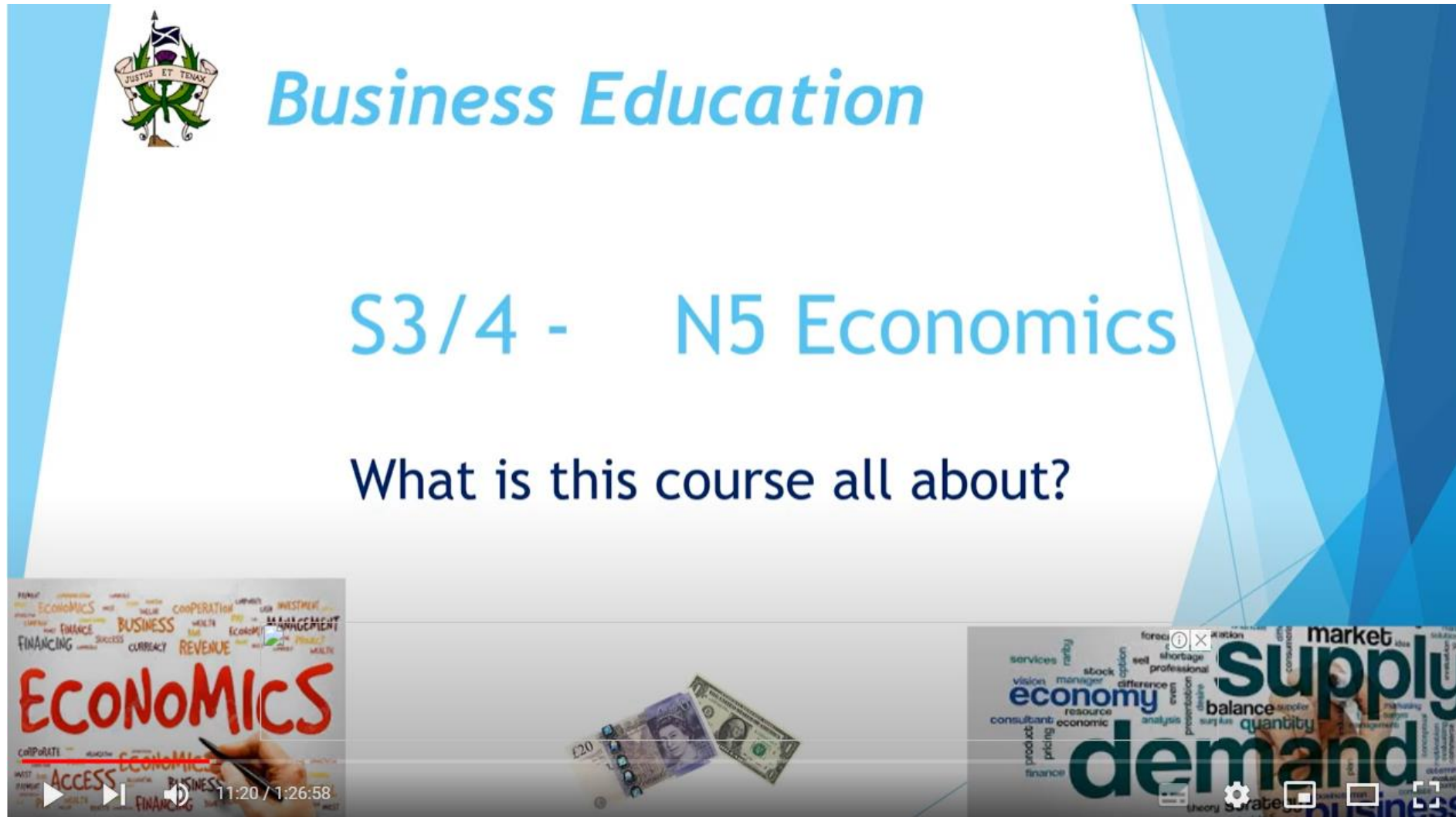
Curriculum Area	Subject	Page
Literacy & Language	<a href="#">English</a>	<a href="#">11</a>
	<a href="#">French/German (for continuers)</a>	<a href="#">12</a>
	<a href="#">Spanish (new start)</a>	<a href="#">13</a>
	<a href="#">Modern Languages for Life and Work</a>	<a href="#">14</a>
Mathematics & Numeracy	<a href="#">Mathematics</a>	<a href="#">15</a>
	<a href="#">Application of Mathematics</a>	<a href="#">16</a>
Social Studies	<a href="#">Economics</a>	<a href="#">17</a>
	<a href="#">Business Management</a>	<a href="#">18</a>
	<a href="#">Geography</a>	<a href="#">19</a>
	<a href="#">History</a>	<a href="#">20</a>
	<a href="#">Modern Studies</a>	<a href="#">21</a>
Sciences	<a href="#">Sciences</a>	<a href="#">22</a>
	<a href="#">Biology</a>	<a href="#">23</a>
	<a href="#">Chemistry</a>	<a href="#">24</a>
	<a href="#">Physics</a>	<a href="#">25</a>
Expressive Arts	<a href="#">Art &amp; Design</a>	<a href="#">26</a>
	<a href="#">Drama</a>	<a href="#">27</a>
	<a href="#">Media</a>	<a href="#">28</a>
	<a href="#">Music</a>	<a href="#">29</a>
	<a href="#">Music Technology</a>	<a href="#">30</a>
Health & Wellbeing	<a href="#">Physical Education (National Qualification)</a>	<a href="#">31</a>
Religious & Moral Education	<a href="#">Religious, Moral &amp; Philosophical Studies (National Qualification)</a>	<a href="#">32</a>
Technologies	<a href="#">Administration &amp; IT</a>	<a href="#">33</a>
	<a href="#">Computing Science</a>	<a href="#">34</a>
	<a href="#">Design &amp; Manufacture</a>	<a href="#">35</a>
	<a href="#">Engineering Science</a>	<a href="#">36</a>
	<a href="#">Graphic Communication</a>	<a href="#">37</a>
	<a href="#">Practical Woodworking</a>	<a href="#">38</a>
	<a href="#">Practical Cookery</a>	<a href="#">39</a>
	<a href="#">Health &amp; Food Technology</a>	<a href="#">40</a>

# S2 Course Choice Market Place



Video Link

[S2 Marketplace - YouTube](#)



# Curriculum – S2

1 ppw		2 ppw	3 ppw	4 ppw
Business Education	Art and Design	Physical Education	French <b>or</b> German <b>or</b> Mandarin	English
Computing Science	Design and Engineering		Science	Mathematics
Drama	HFT			
Geography	Music			
History	PSE			
Modern Studies	RMPS			

# S3 Curriculum Information

Pupils make a *balanced* course choice at end of S2 with 8 main subjects selected from a range of curricular areas including:

- 1. English**
- 2. Maths**
- 3. Modern Languages** (French, German or Mandarin)
- 4. Social Subjects** (Geography, History, Modern Studies, Economics or RMPS)
- 5. Science** (Biology, Chemistry, Physics or Science/Princes Trust)
- 6. Three further free choices** (subjects 6,7,8)
- 7. Two reserve subject choices** (labelled R and S)

Choice	Curricular Area	Core Subjects Available
1	English	All pupils study English
2	Mathematics	All pupils study Maths or Applications of Maths
3	Modern Languages	a) Continue current Language: French, German, Mandarin b) Choose <b>Modern Languages for Life and Work</b> (Levels 3/4)
4	Social Studies	Choose 1 from the following: <div> Geography      History      Modern Studies  RMPS      <b>Economics</b> (N5 only) </div>
5	Sciences	Choose 1 from the following: <div> Biology      Chemistry  Physics      Science (National 3/4) </div>

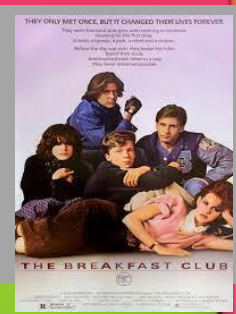
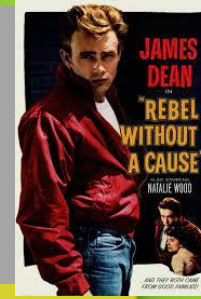
Choice	Curricular Area	Subjects Available – choose 3 subjects in preference order	
6 7 8	Expressive Arts HWB Modern languages Sciences Social Studies Technologies Religious & Moral Education	Administration and IT Art & Design Biology Business Management Computing Science Chemistry Drama Design & Manufacture Engineering Science Economics French Geography German	Graphic Communication History Health & Food Technology (HFT) History Media Studies Modern Studies Music Music Technology Physical Education Physics Practical Cookery Practical Woodwork RMPS Spanish
Reserve choices (R & S)	Choose two further subjects	Choose two reserve subjects in preference order. <b>The first reserve subject = R</b> <b>-The second reserve subject = S</b>	

# Progression from S2 to S3 (New Courses)

S2 Course	S3 Option	Stand Alone New Course Options
Business Management	Administration and IT	Economics
	Business Management	Media Studies
Craft and Design	Design and Manufacture	Spanish
	Graphic Communication	
	Practical Woodworking	
Home Economics	Health and Food Technology (HFT)	
	Practical Cookery	
Music	Music Practical	
	Music Technology	



# Media Studies



## • S3/Nat 5 Media

- In S3 you will be introduced to the key aspects of Media. This includes:
  - Categories
  - Narrative
  - Language
  - Representation
  - Audience
- As you learn about these you will also be introduced to the practical elements of Media while looking at several films to connect your learning.

## • S4/Nat 5 Media

- S4 will be a continuation of what you did in S3 while building your knowledge on the key aspects. We will also look at Institutions, Society and Role of the Media.
- In S4 you will take your knowledge and connect it to two media texts.
- This year we have studied the Teen Genre, but this may change.
- 50% of your final mark is your coursework where you film and edit and evaluate your own horror trailer.

# Employability Focussed Courses

Over the last few years we have been developing opportunities to provide more vocational skills for a limited number of pupils in S3.

These courses are currently being delivered within:

- **Science & Health** NPA Level 3/4.
- **Modern Languages for Life** NPA Level 3/4



## The Prince's Trust Achieve Awards

- Focus on personal development and employability Skills
- Opportunity to work with a Prince's Trust Business Mentor
- Develop their English and mathematics skills within a practical, relevant context



- Delivered with The Prince's Trust Award
- Boroughmuir High School is one of the few schools accredited to deliver this qualification.
- The Award in Barista Skills at SCQF level 5 will develop the knowledge, understanding and technical skills.

- Student run barista project
- SQA Personal Development and Employability Qualification & N5 Barrista skills)
- Develops employment skills, focuses on sustainable working, sustainable products Project has won the Princes Trust Scotland Community Impact and Education Achiever award & will now be a finalist for the national awards, later in the year. ( National TV?, The King?, Ant & Dec?)



*(SDG 12-  
Responsible  
Consumption and  
Production)*



**Prince's Trust**  
Scotland

In addition to 8 subjects, the S3 curriculum contains:

**1. Core PE** as a double period

**2. Personal and Social Education (PSE)** taught by the Head of House / Pupil Support Guidance teacher.  
1 period per week

**3. Health and Wellbeing & Wider Achievement Awards**

1 period per week

Spread over S3 and S4

SQA Wellbeing Awards



# Course choices are entered online

[www.studentoptions.co/S2-BOR/](http://www.studentoptions.co/S2-BOR/)

**T.O.O.L.S**

TimeTabler Options On-Line System



Collecting Student Choices On-line

---

Please enter your details:

Username:

Password:



**From: Boroughmuir High School**

To the Parent or Guardian of

Dear Parent,

**S3 2023 : Entering your Choices over the Internet**

Please follow these steps to enter your choices on-line using the 'TOOLS' system.

To start TOOLS, type the following URL into your internet browser:

<https://www.studentoptions.co/S2-BOR/>

Then login using your personal details:

Username: \_\_\_\_\_

Password: \_\_\_\_\_

Once in TOOLS, you should make your 8 Choices by following the instructions on screen.

Enter 'R' against a 1st Reserve Subject, and 'S' against a 2nd Reserve Subject.

(These Reserves will only be used if it is not possible to provide the first 8 Choices).

To help you, you will see that an Example is provided - click the link to see the Example.

If you have any questions please speak to your child's Guidance teacher or Mr Hembury.

Please ensure indicative choices are entered by 19th February 2023

Queries can also be directed to [coursechoice@boroughmuir.edin.sch.uk](mailto:coursechoice@boroughmuir.edin.sch.uk)



# T.O.O.L.S

TimeTabler Options On-Line System



## PUPIL GUIDE

### S2 to S3 Coursing



- TOOLS = TimeTabler Options On-Line System
- Login details issued in PSE

Also available is the

- Course Choice Booklet
- Website Help Guide
- <https://www.studentoptions.co/S2-BOR>



Boroughmuir High School S3 2020

To leave without making any choices: [Log out](#)

**Choices for:** [S3](#) [S2](#) [S1](#)

**Extra information:** Click [here](#) for an **example**/instructions. Click [here](#) for **course information**.

## Step 1 of 5

[Start](#) > Choice 1 > Choice 2 > Choice 3 > Free choice (with reserves) > Confirmation

### Choose the Modern Language you are currently studying in S2

- ☐ French (Fren)
- ☐ German (Germ)
- ☐ Mandarin (Mand)
- ☐ To interview1 (TBI1)

You may choose additional languages later. If there is an issue click TBI1.

Next



Boroughmuir High School      S3 2020

---

To leave without making any choices: [Log out](#)

## Choices for:

**Extra information:** Click [here](#) for an example.      Click [here](#) for course information.

## Step 4 of 5

[Start](#) > [Choice: French](#) > [Choice: Economics](#) > [Choice: Biology](#) > Free choice (with reserves) > Confirmation

**Please enter your 3 choices** by entering 4, 5, 6 in the box by your chosen subjects.

**To mark your Reserve choice**, put 'R' by that subject.

**To mark your Second reserve choice**, put 'S' by that subject.

Subject	Choice
Admin IT (AdmI)	<input type="text"/>
Art & Design (ArtD)	<input type="text"/>
Biology (Biol)	Already selected



Please check your Subjects and if they are correct, click 'Confirm Choices'

---

**Name:**

**Class: '**

**Username: IAARO**

Choice No.	Subject chosen
1	French
2	Economics
3	Biology
4	Admin IT
5	Art & Design
6	Business
R	Chemstry
S	Computing

Confirm Choices

Go back and change choices



## Thank you

---

Your Subject Choices have been saved - thank you.

[Click here if you would like an Email confirmation](#)

## Request email confirmation

---

This will send a confirmation of your Choices to the email address you enter:

Email address:

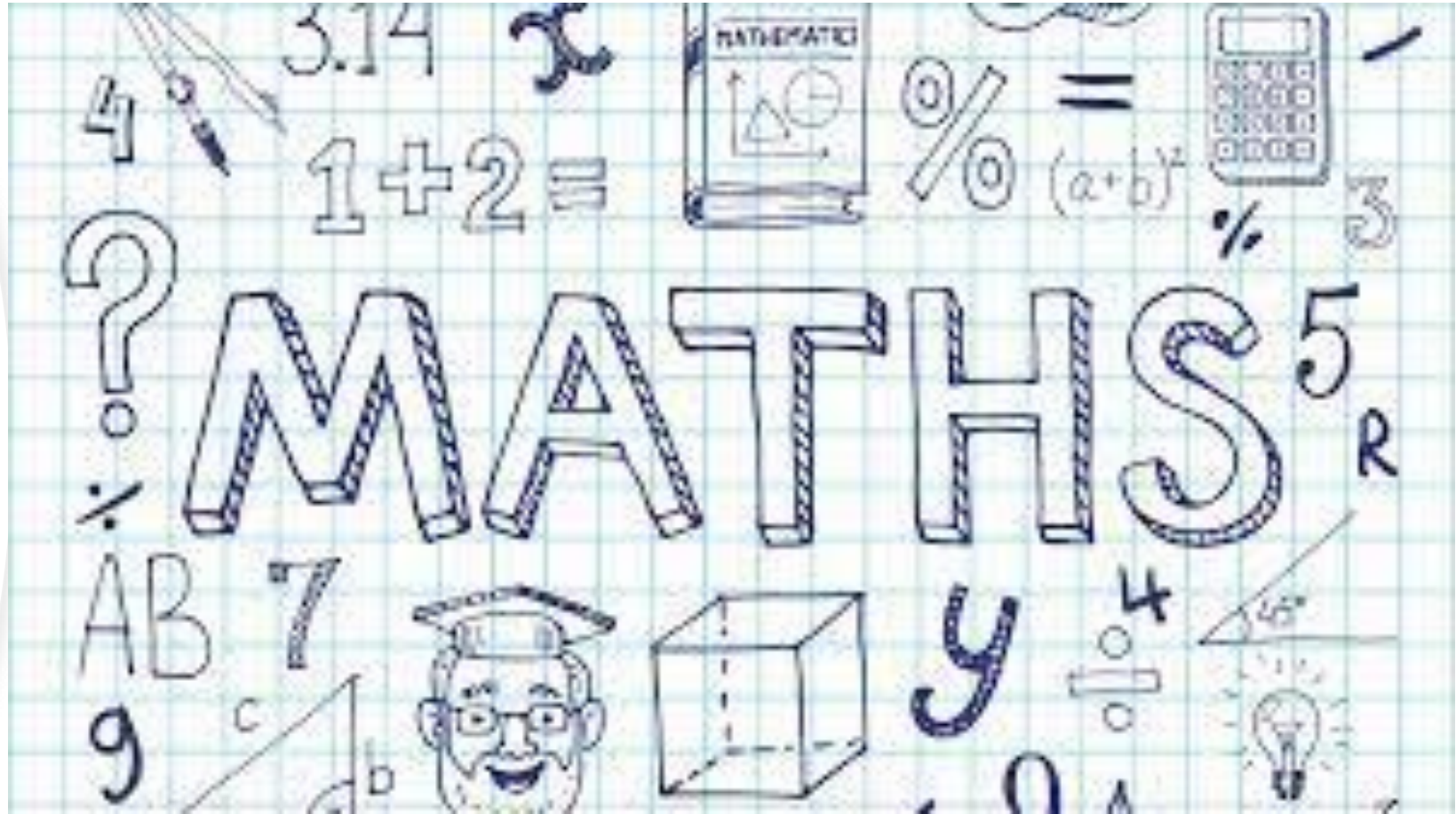
Submit

# Maths Pathways in S3 and Beyond

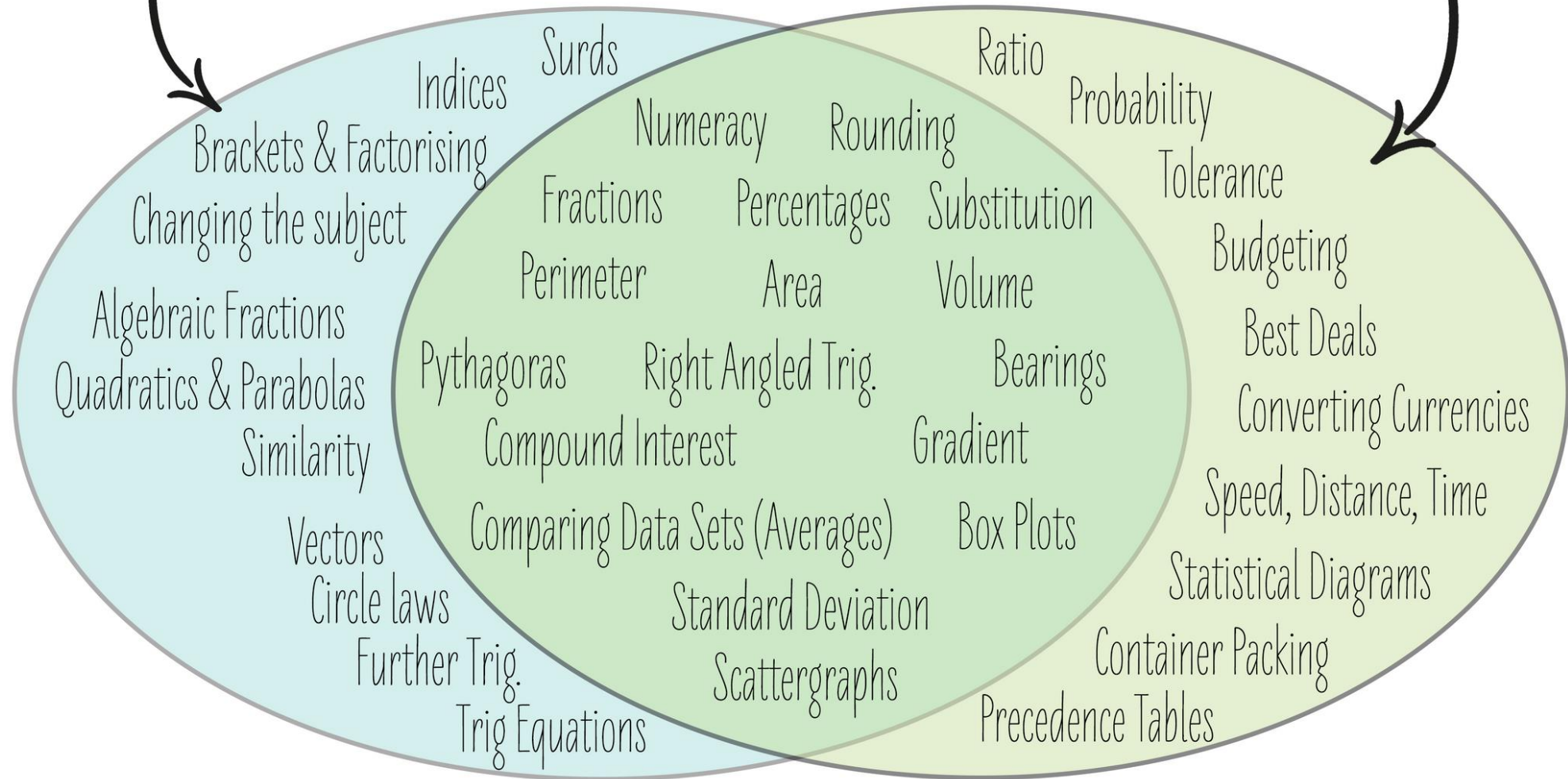
There are two  
pathways in S3 & S4

## Aims

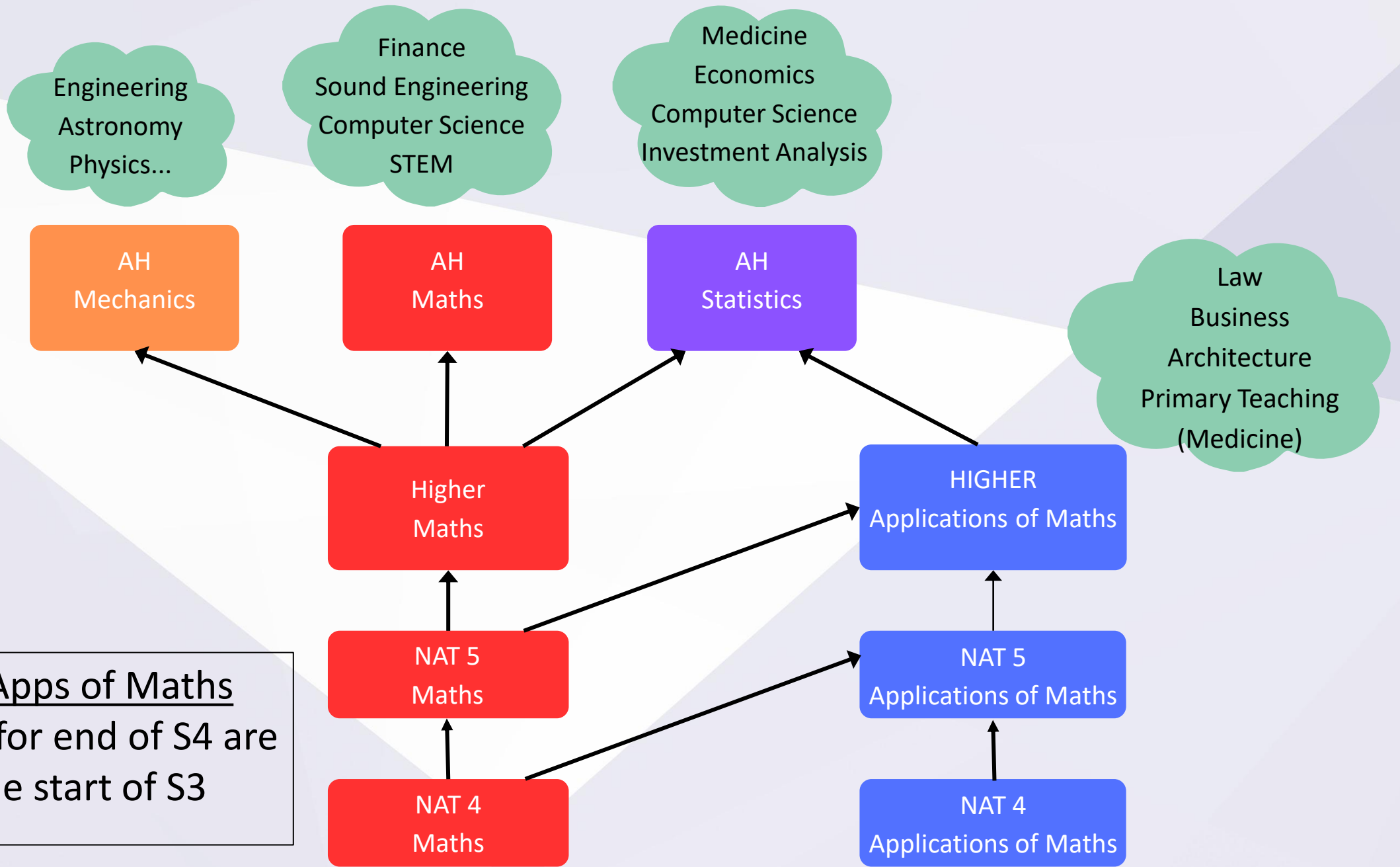
- 1) All pupils achieve their potential
- 2) Gain the highest level possible by the end of S4, S5 or S6



# MATHS OR APPLICATIONS



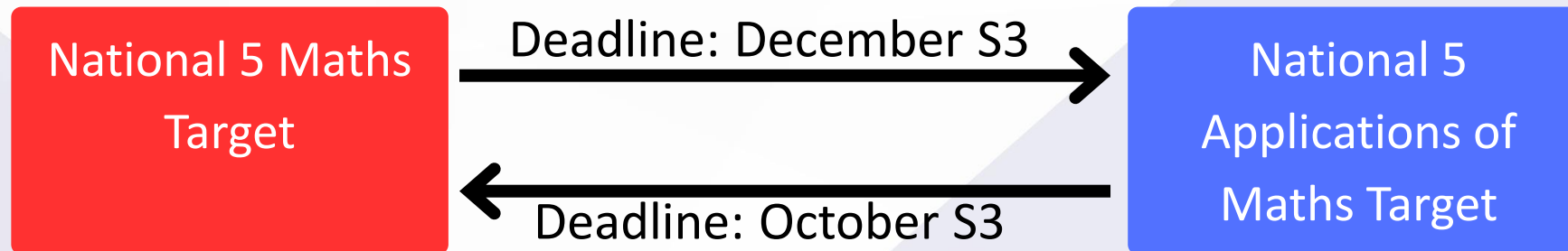
## WHAT'S THE DIFFERENCE?



Maths/Apps of Maths  
Targets for end of S4 are  
set at the start of S3

\*University and college course requirements differ by institution - and are changing!

## Can I Change My Mind?



# S2/3 Curriculum Levels articulate with National Qualification (NQ) Levels in S4 and beyond

Continuity  
from S2  
using  
Curriculum  
Working  
Levels

	Stage	Typical CfE Levels	NQ Level
CfE Levels S1-3	By end of P3	Level 1	
	By end of P7	Level 2	
	S1 and S2	Level 3	
	S3	Level 4	National 4 National 5
S4-6 NQ Levels	End of S4		National 4 National 5
	By end of S5		National 5 Higher (6)
	By end of S6		National 5 Higher (6) Advanced Higher (7)

# National Progression Awards (NPA) Scottish Credit and Qualifications Framework [\(SCQF\)](#)



SCQF compares Scottish qualifications and shows how qualifications relate to each other. Each qualification has a level and a number of credit points.

We offer a range of SCQF courses at **equivalent** levels:

SQA National 4    &    NPA Level 4

SQA National 5    &    NPA Level 5

SQA Higher        &    NPA Level 6        **(S5 and S5 only)**

**NPA courses do not** have a final written exam in S4

Increasing challenge

SCOTTISH CREDIT AND QUALIFICATIONS FRAMEWORK (SCQF)

SCQF LEVEL 1	SCQF LEVEL 2	SCQF LEVEL 3	SCQF LEVEL 4	SCQF LEVEL 5	SCQF LEVEL 6	SCQF LEVEL 7	SCQF LEVEL 8	SCQF LEVEL 9	SCQF LEVEL 10	SCQF LEVEL 11	SCQF LEVEL 12
NATIONAL 1	NATIONAL 2	NATIONAL 3	NATIONAL 4	NATIONAL 5	HIGHER	ADVANCED HIGHER		BACHELORS/ ORDINARY DEGREE	HONOURS DEGREE	MASTERS DEGREE	DOCTORAL DEGREE
AWARDS	AWARDS	AWARDS	AWARDS	AWARDS	AWARDS	AWARDS	AWARDS			POST GRADUATE CERTIFICATE	
		SKILLS FOR WORK	SKILLS FOR WORK	SKILLS FOR WORK	SKILLS FOR WORK	SCOTTISH BACCALAUREATE					
	NATIONAL PROGRESSION AWARDS	NATIONAL PROGRESSION AWARDS	NATIONAL PROGRESSION AWARDS	NATIONAL PROGRESSION AWARDS	NATIONAL PROGRESSION AWARDS						
	NATIONAL CERTIFICATES	NATIONAL CERTIFICATES	NATIONAL CERTIFICATES	NATIONAL CERTIFICATES	NATIONAL CERTIFICATES	HIGHER NATIONAL CERTIFICATES	HIGHER NATIONAL DIPLOMA				
					SCOTTISH VOCATIONAL QUALIFICATIONS 3	SCOTTISH VOCATIONAL QUALIFICATIONS 3	SCOTTISH VOCATIONAL QUALIFICATIONS 4				
			MODERN APPRENTICESHIPS SVQ 1	MODERN APPRENTICESHIPS SVQ 2	MODERN APPRENTICESHIPS SVQ 3	MODERN APPRENTICESHIPS SVQ 3	TECHNICAL APPRENTICESHIPS SVQ 4	TECHNICAL APPRENTICESHIPS SVQ 4	PROFESSIONAL APPRENTICESHIPS	PROFESSIONAL APPRENTICESHIPS SVQ 5	PROFESSIONAL APPRENTICESHIPS
					PROFESSIONAL DEVELOPMENT AWARDS	PROFESSIONAL DEVELOPMENT AWARDS	PROFESSIONAL DEVELOPMENT AWARDS	PROFESSIONAL DEVELOPMENT AWARDS	PROFESSIONAL DEVELOPMENT AWARDS	PROFESSIONAL DEVELOPMENT AWARDS	PROFESSIONAL DEVELOPMENT AWARDS

Level 3	Level 4	Level 5	Level 6	Level 7
Standard Grade (SG) Foundation	SG General, Intermediate 1	O Grade, SG Credit, Int 2	Higher	CSYS, A-Level

SCQF Levels	SQA Qualifications				Qualifications of Higher Education Institutions	Apprenticeships & SVQs
12	<div>Targets for S4</div>		<div>↑</div>		Doctoral Degree	Professional Apprenticeship
11					Masters Degree, Integrated Masters Degree, Post Graduate Diploma, Post Graduate Certificate	Graduate Apprenticeship Professional Apprenticeship SVQ
10					Honours Degree, Graduate Diploma, Graduate Certificate	Graduate Apprenticeship Professional Apprenticeship
9			Professional Development Award		Bachelors / Ordinary Degree, Graduate Diploma, Graduate Certificate	Graduate Apprenticeship Technical Apprenticeship SVQ
8		Higher National Diploma			Diploma Of Higher Education	Higher Apprenticeship Technical Apprenticeship SVQ
7	Advanced Higher, Awards, Scottish Baccalaureate	Higher National Certificate			Certificate Of Higher Education	Modern Apprenticeship SVQ
6	Higher, Awards, Skills for Work Higher	<div>↑</div> <div>↓</div>				Modern Apprenticeship Foundation Apprenticeship SVQ
5	National 5, Awards, Skills for Work National 5	<div>↓</div>		<div>↓</div>		Modern Apprenticeship SVQ
4	National 4, Awards, Skills for Work National 4					SVQ
3	National 3, Awards, Skills for Work National 3					
2	National 2, Awards	<div>↓</div>				

# Exam Entry Levels at National 3,4,5?



Pupils aim to achieve a **qualification in each subject** in S4.

All pupils remain in their subjects for S3 and S4.

## **Pathways in S4:**

- National 5 (final exam, graded A-D)
- National 4 or National 3 (no final exam, pass or fail)

## **Where evidence suggests a N5 award (grade A-D) is unlikely:**

- Pupils may be advised to complete the National 4 course award and/or
- Level 5 course Unit assessments to completing the N5 course assessments

## **Do ALL pupils complete 8 x National 5 exams?**

No, typically 60% of S4s are entered for 8xN5s

## Exam Entry Levels at National 3,4,5?

The final level based on their progress, with some final decisions taken after the S4 Prelims (Nov. 2024).



### General criteria for National 5 in S4:

- Achieved close to a Grade D (or better) in S4 prelims
- Passed N5 class assessments to date
- Progress & Effort is *Meeting Expectations*
- Commitment necessary to achieve an award at National 5 in relation to attendance and punctuality

### Course entry levels and decision will be:

- Indicated on Tracking Reports
- Discussed with the pupil and parent/carers in S3 and S4

**Opportunities for personal achievement**

**Interdisciplinary learning**

**The Curriculum**  
'the totality of all that is planned  
for children and young people  
throughout their  
education'

**Ethos and life of the  
school as a community**

**Curriculum areas  
and subjects**



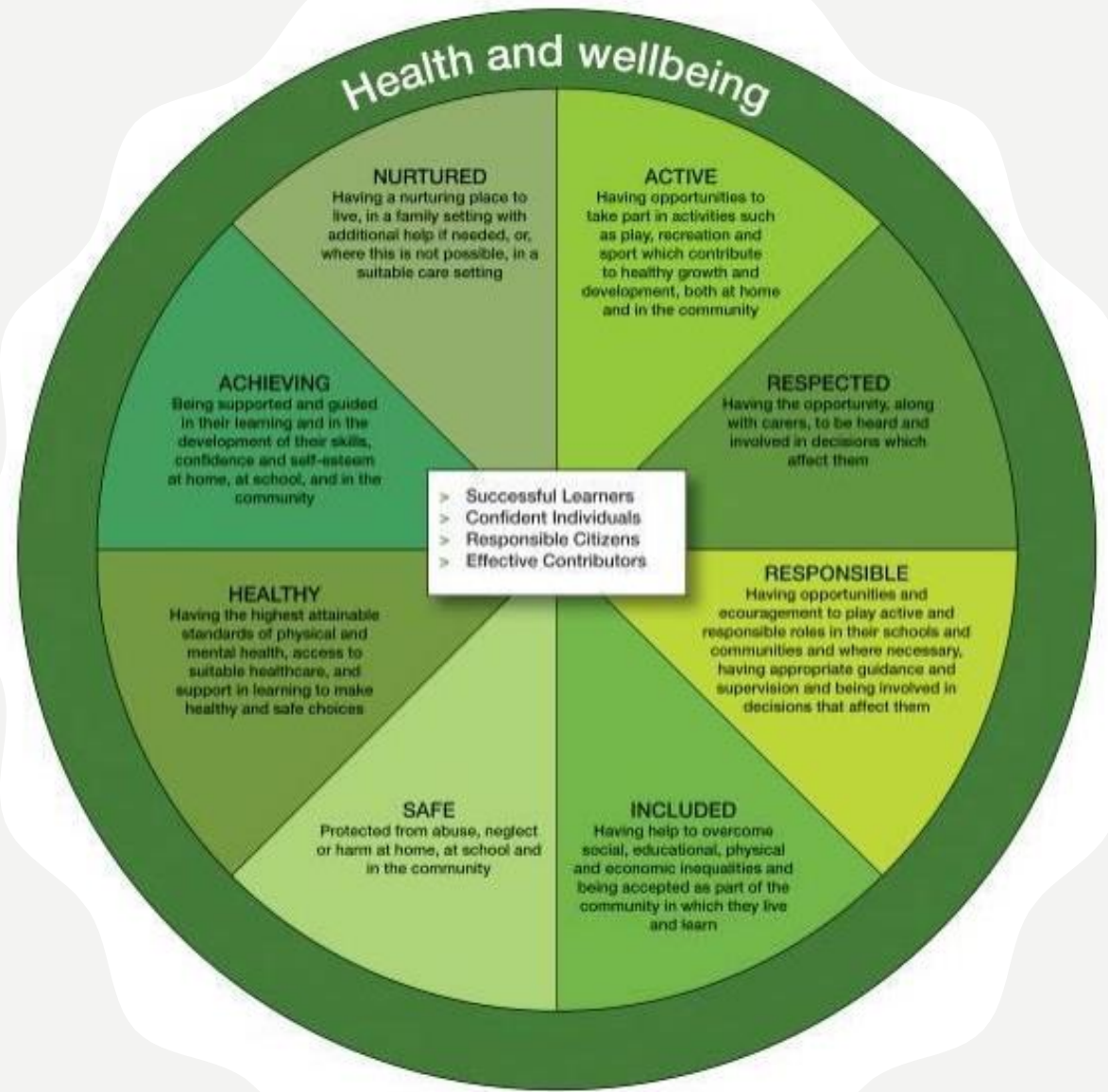
# S3/ S4 HWB ROTA

# ROTA AIMS

- Widen pupils understanding and experience of HWB
- Utilise staff skills, resources and national initiatives to support HWB Benchmarks
- To be dynamic and change to meet the needs pupils driven by data, the wider needs of the school community and local priorities
- To add value through further SQA accreditation at the end of S4, with the potential to achieve two wider SQA qualifications



- develop self-awareness and respect for others, meet challenges, manage change and build relationships
- acknowledge diversity and understand that it is everyone's responsibility to challenge discrimination
- experience personal achievement and build resilience and confidence
- understand how eating, being active & decisions impact behaviour and relationships
- participate in a wide range of activities which promote a healthy lifestyle
- find help and resources to inform choices
- assess and manage risk, understand the impact of risk-taking behaviour
- reflect on my strengths and skills to help me make informed choices



# S3 HEALTH AND WELLBEING

2022/23

SCQF Level 4  
RBV award (50%)

Unit - Investigating Religion  
and  
Belief



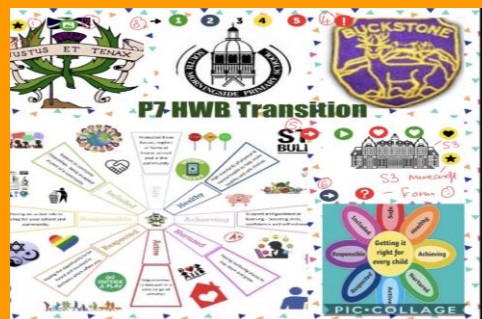
RBV unit (50%)

Unit - Values in Action (YPI)



SCQF Level 4 Wellbeing  
Award

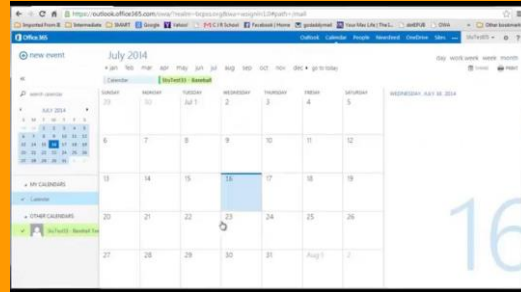
P7 HWB transition-  
Boroughmuir on Tour  
Transition days



# S4 HEALTH AND WELLBEING 2023-24

Rotation 1  
4 weeks  
August to 4<sup>th</sup> Sept

RBV



What is my year going to look like?

**Digital Diary**  
**Metacognition**

Rotation 2- 7 weeks  
Bloom from 11<sup>th</sup> Sept- 27<sup>th</sup> Nov

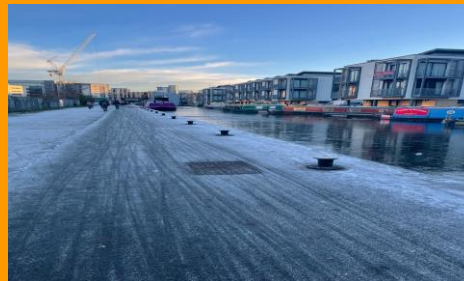
\* Check in of study TT/ Digital diary - Nov



**What is resilience?**

Exam stress  
Decisions future  
Social pressures  
Managing studies  
Friendships  
Juggling time

Rotation 3  
**Wellbeing Award/ project - SQA**  
4<sup>th</sup> Dec to TT change



The power of relationships YMM  
The amazing brain YMM  
Wellbeing during exams YMM  
Eat, Sleep, Exercise, relax.  
Investigate a MH issue

**Careers Advice** - Our Careers Advisor is **Ms Cara Davidson** [Cara.Davidson@sds.co.uk](mailto:Cara.Davidson@sds.co.uk)

Skills  
Development  
Scotland

S2 PSE classes receive an SDS sessions and appointments can be made by request through the Pupil Support Leaders or by email.

The Careers section of the school website contains information



Careers



**My World of Work** is a key source of careers information



**A tour of Scotland's  
online careers service**



# Cara Davidson (SDS): Available Support and Tips

## What help is available?

Pupils can **book an appointment** through emailing me or letting their guidance teacher know they would like an appointment. My email is: [Cara.davidson@sds.co.uk](mailto:Cara.davidson@sds.co.uk)

I will also be offering **lunchtime subject choice drop ins** for S2's on Tuesdays :23<sup>rd</sup> January , 30<sup>th</sup> January ,6<sup>th</sup> February

I am also coming into every class and doing **small group subject choice discussions**

# How can you help?

At this stage it's ok if your young person hasn't decided on a career!

but it's never too early to understand more about themselves and consider their strengths and interests. This can be really helpful when choosing subjects.

A good place to start is My World of Work – Scotland's careers website.

To get started please encourage your child to visit [myworldofwork.co.uk/subjectchoices](https://myworldofwork.co.uk/subjectchoices) and work through the following Action Plan:

**1. Complete the About Me quiz**

**2. Try the Strengths tool**

**3. Try the Skills tool**

**4. Use the Option Choices tool**

Completing these tasks will help your child begin to develop career management skills and to find ideas for careers suited to them.

# Developing the Young Workforce (DYW)

Ross Young- School Coordinator

## DYW at Boroughmuir HS



IMAGE: IHG



# Key Messages

## Things to consider....

**DYW**

EDINBURGH, MIDLOTHIAN  
& EAST LOTHIAN  
Developing the  
Young Workforce

- Studies show the more pupil interactions with employers and businesses the more likely they will be happy within their career, but also make more money.
- Young people who undertook four or more employer engagement activities between the ages of 14-15 are 86% less likely to be NEET than their peers who did not take part in such activities.

NEET- Not in Education, Employment, or Training

[Ross.Young@edinburghchamber.co.uk](mailto:Ross.Young@edinburghchamber.co.uk)

**Opportunities for personal  
achievement**

**Interdisciplinary  
learning**

**The Curriculum**  
'the totality of all that is planned  
for children and young people  
throughout their  
education'

**Ethos and life of the  
school as a community**

**Curriculum areas  
and subjects**

# School Support – Support for Pupils (Guidance)



Guidance provide continued help and support. They work in close partnership with parents/carers, teachers and other specialist agencies.

- Deliver PSE & support well-being
- Review Tracking and Reports
- Lead on pupils' pastoral needs
- Have an overview of educational needs
- Support attendance and behaviour monitoring

## Pupil Support Leaders

**Bruntsfield - Mrs Scherczer**

**Hartington - Miss Grant**

**Leamington - Miss Nisbet**

**Montpellier - Mr McIlwaine**

**Viewforth - Mr Brandie**

**Westhall - Mrs Wallace**

# Support for Learning (SfL)



Mrs Hall, Support for Learning Leader and the team of SfL Teachers and Pupil Support Assistants (PSAs):

- Provide support in classes and in small group settings
- Offer specialised teaching to develop necessary language
- Help identify assessment strategies
- Involve parents in the planning

**Homework Club - every Wednesday school library from 3.35 - 4.30.**

Support with homework, classwork and revision.

A quiet space for doing homework and you can access library resources and ICT. **Refreshments are be provided!!**

# Extra-Curricular Activity at BHS

## Sports:

Various sports clubs and teams e.g. hockey, football, rugby, Table Tennis, Netball, Basketball, Ski Race, Volleyball, American Football, Running



## Clubs & Societies:

Anti-Racism (IYS), HWB, Chess, Climate Change, STEM, Eco, Science, GSA, Chess, SU, Equalities, Pupil Voice, Debating, Music (Choir, Wind, Strings, Bagpipes), Medics, Film, Drama, Art, Languages, Creative Writing & Makar, Games, Enigma, Computing, Wargames, Board Games, Gardening, Christmas Carol



Tony Segall - Coordinator



# Pupil Leadership -Ambassador Program

We already have a range of leadership opportunities. We would encourage as many pupils as possible to become involved

e.g.

Sports

Food

School Hosts

Eco-ambassadors

Subject (e.g. Science)

Wellbeing

Digital

Club

Boroughmuir Beans

# Wellbeing Week - May 2024



Tuesday 25 <sup>th</sup> June	Wednesday 26 <sup>th</sup> June	Thursday 27 <sup>th</sup> June
Bruntsfield Leamington – Humanutopia (School) Hartington	Bruntsfield Leamington – Community Project Hartington	All Together  All Morning – Meggetland  All Afternoon – Cineworld  Will be a small cost
Montpelier Viewforth – Community Project Westhall	Montpelier Viewforth – Humanutopia (School) Westhall	



I can describe me as an.....

- Individual
- Contributor
- Citizen
- Learner



# Questions

