



Boroughmuir High School Course Choice Information 2024-5

- Mr Dempster Headteacher
- Mr Hayes Depute Head Teacher S4/5
- Cara Davidson Careers
- Alan Binnie Edinburgh College
- Matthew Quinn Edinburgh College
- Mr Brandie Viewforth
- Ms Grant Hartington
- Ms Nisbet Leamington
- Mr McIlwaine Montpelier
- Ms Scherzer Bruntsfield
- Ms Wallace Westhall





Our aims this year:

- Qualifications
- Wellbeing
- Leadership

Our plan for the year:

Important dates

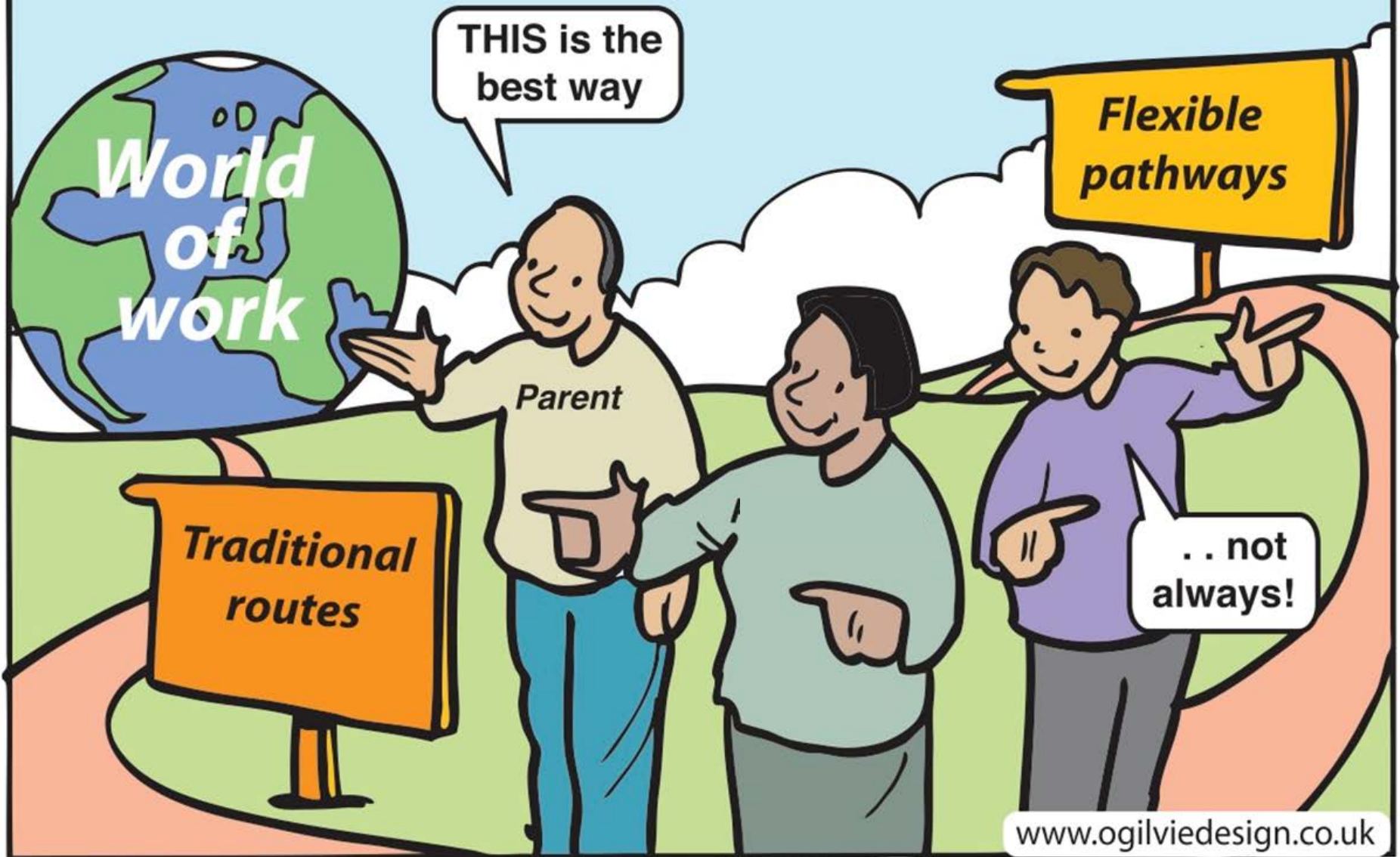
- 17th August Welcome assembly, students plan key dates
- August **Parent information evening** 'how to help', plan routine together
- End September **Tracking report**, families discuss progress, plan next steps
- Nov **S4 Prelims**
- Nov **S5 Parent consultations**
- December **S4 Progress report**, students make '**success plan**' and discuss
- Thursday 16th January **S4 Parent consultations**
- Thurs 25th January **Course choice** presentation, deadline soon after, plan for next year
- 23rd February **S5/6 progress reports**
- February Students produce **revision plan**, families help
- 1st March Course choice deadline
- 12th March College application deadline (tbc)
- End March estimates
- 22nd April: **SQA exams** start, study leave, immersion days
- 24th June **S4&S5 Work experience**
- 6th August results



What must I do now?

1. **Speak to guidance teacher** (especially if thinking of leaving to get support from us and Skills Development Scotland (SDS))
2. **Research options**
3. **Speak to Careers and SDS advisers**
4. **School course choice deadline 19th February**
5. **You** apply to college **by 12th March** – come to workshop on Friday 22nd / Monday 29th January

Choose the best for you...





How to navigate the Scottish curriculum

Very **flexible** in 4 ways:

- **WHEN** *x3 chances S4, S5, S6*
 - **WHERE** *school, college, partnerships*
 - **CHOICE** *30 + subject options*
 - **CHALLENGE** *levels National 3, National 4, National 5, Level 6 Highers, Level 6 NPAs..., Level 7s...*
-
- ✓ **Take sensible steps forward**
 - ✓ **Do what's right for you, not for others**
 - ✓ **Think of goals, but be open to change as you go**

Increasing challenge

SCOTTISH CREDIT AND QUALIFICATIONS FRAMEWORK (SCQF)

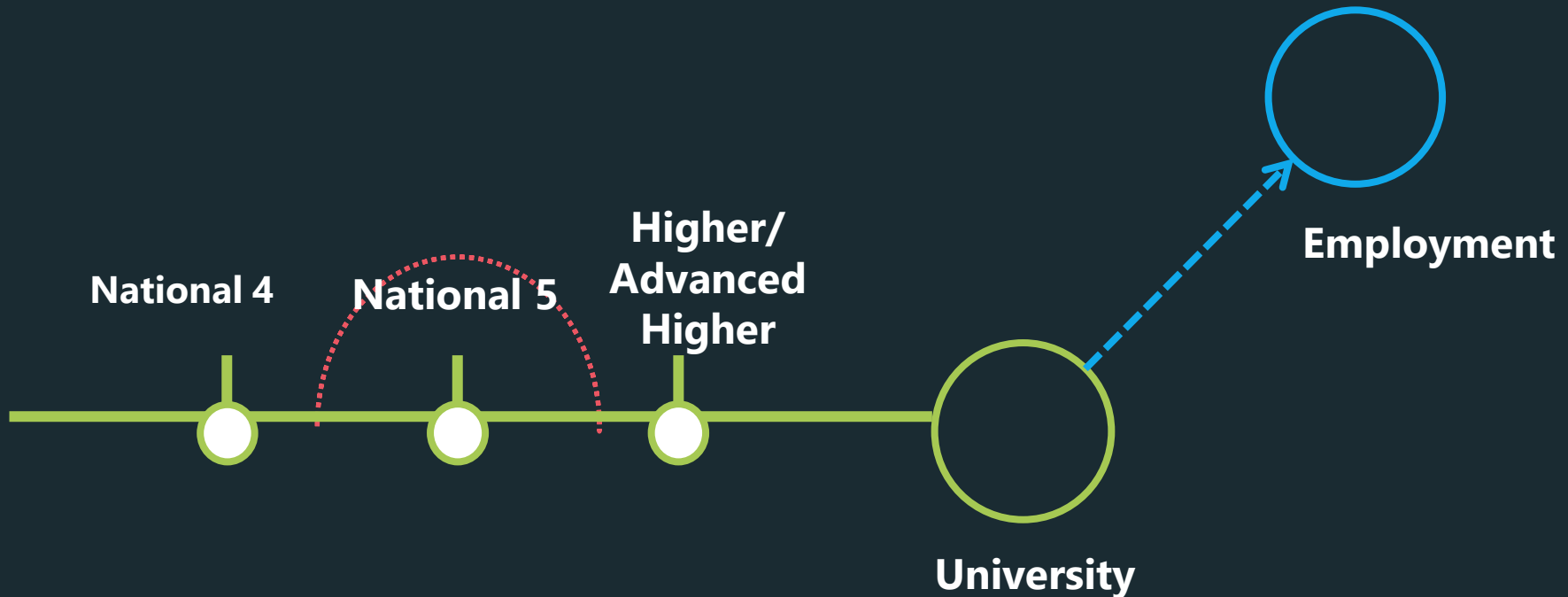
SCQF LEVEL 1	SCQF LEVEL 2	SCQF LEVEL 3	SCQF LEVEL 4	SCQF LEVEL 5	SCQF LEVEL 6	SCQF LEVEL 7	SCQF LEVEL 8	SCQF LEVEL 9	SCQF LEVEL 10	SCQF LEVEL 11	SCQF LEVEL 12
NATIONAL 1	NATIONAL 2	NATIONAL 3	NATIONAL 4	NATIONAL 5	HIGHER	ADVANCED HIGHER		BACHELORS/ ORDINARY DEGREE	HONOURS DEGREE	MASTERS DEGREE	DOCTORAL DEGREE
AWARDS	AWARDS	AWARDS	AWARDS	AWARDS	AWARDS	AWARDS	AWARDS			POST GRADUATE CERTIFICATE	
		SKILLS FOR WORK	SKILLS FOR WORK	SKILLS FOR WORK	SKILLS FOR WORK	SCOTTISH BACCALAUREATE					
	NATIONAL PROGRESSION AWARDS	NATIONAL PROGRESSION AWARDS	NATIONAL PROGRESSION AWARDS	NATIONAL PROGRESSION AWARDS	NATIONAL PROGRESSION AWARDS						
	NATIONAL CERTIFICATES	NATIONAL CERTIFICATES	NATIONAL CERTIFICATES	NATIONAL CERTIFICATES	NATIONAL CERTIFICATES	HIGHER NATIONAL CERTIFICATES	HIGHER NATIONAL DIPLOMA				
					SCOTTISH VOCATIONAL QUALIFICATIONS 3	SCOTTISH VOCATIONAL QUALIFICATIONS 3	SCOTTISH VOCATIONAL QUALIFICATIONS 4				
		MODERN APPRENTICESHIPS SVQ 1		MODERN APPRENTICESHIPS SVQ 2	MODERN APPRENTICESHIPS SVQ 3	MODERN APPRENTICESHIPS SVQ 3	TECHNICAL APPRENTICESHIPS SVQ 4	TECHNICAL APPRENTICESHIPS SVQ 4	PROFESSIONAL APPRENTICESHIPS	PROFESSIONAL APPRENTICESHIPS SVQ 5	PROFESSIONAL APPRENTICESHIPS
					PROFESSIONAL DEVELOPMENT AWARDS	PROFESSIONAL DEVELOPMENT AWARDS	PROFESSIONAL DEVELOPMENT AWARDS	PROFESSIONAL DEVELOPMENT AWARDS	PROFESSIONAL DEVELOPMENT AWARDS	PROFESSIONAL DEVELOPMENT AWARDS	PROFESSIONAL DEVELOPMENT AWARDS

Level 3	Level 4	Level 5	Level 6	Level 7
Standard Grade Foundatio n/ Access 3	Standard Grade General/ Intermed iate 1	Ordinary (‘O’) Grade/ Standard Grade Credit/ Intermedi ate 2	Higher	Certificate in Sixth Year Studies (CSYS)/ A-Level

One Route (less than half)

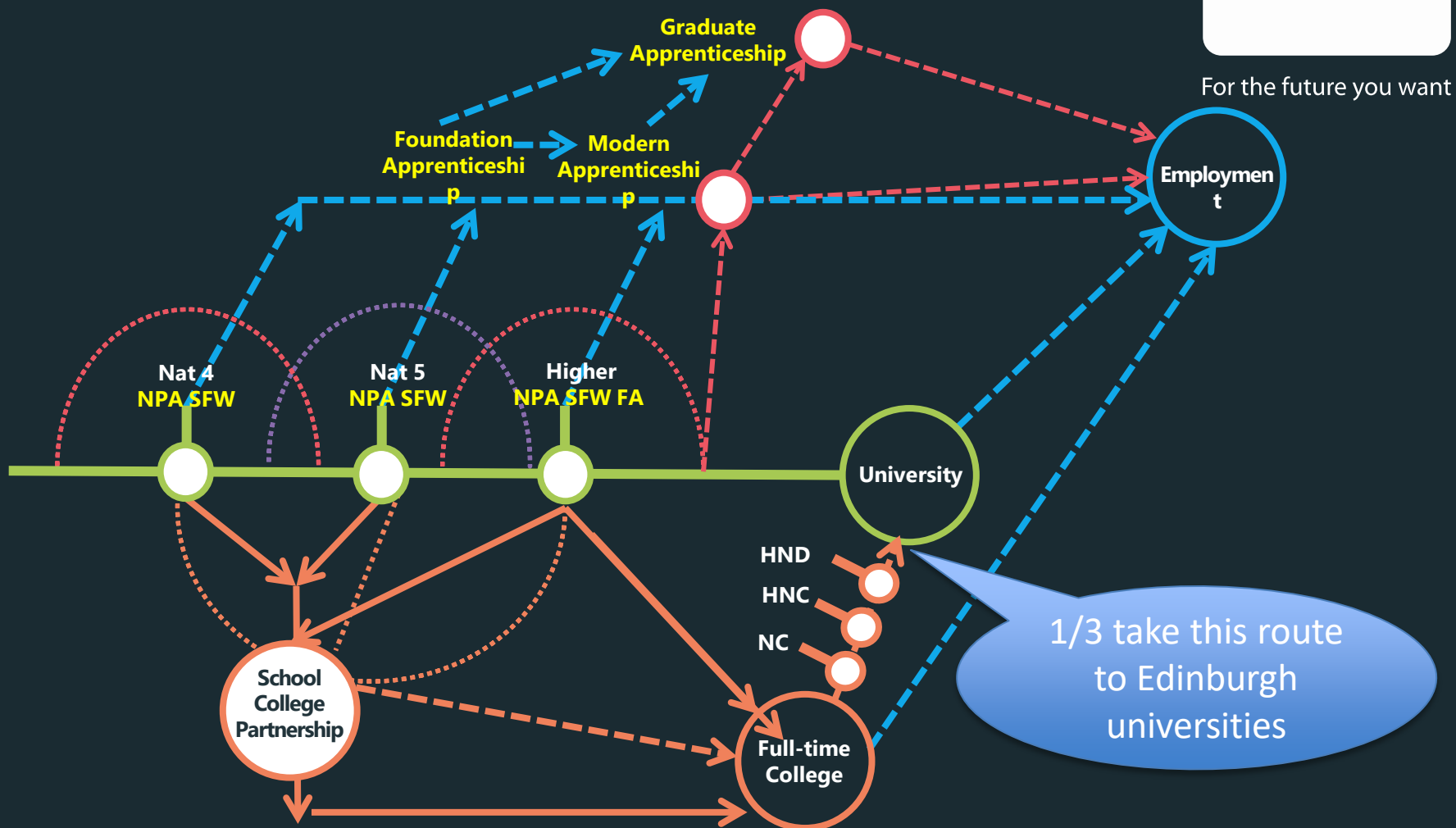


For the future you want



For the future you want

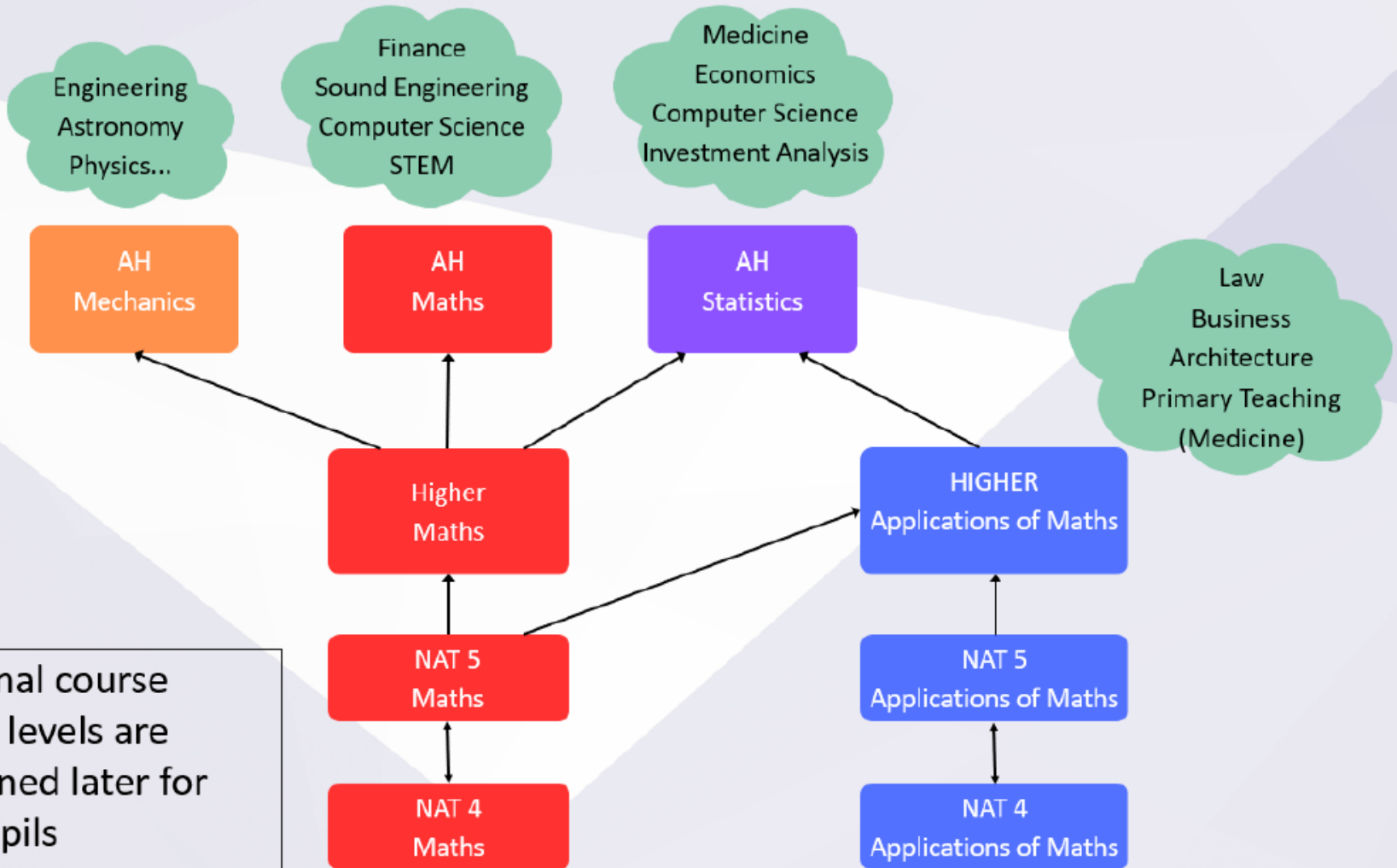
Many other routes



For the future you want



Different routes (for example Maths)





What are the options?

- Leave school: job (if 16 by September)
- Leave school: apprenticeship, college
- Part school, part college (School-College-Partnership)
- School in S5, leave in S6
- School in S5 and S6



What are the options? Apprenticeships

[Opportunities Board \(theguarantee.org\)](https://theguarantee.org)

TAX APPRENTICESHIP PROGRAMME - 10 POSTS - 18050

📅 21/12/2022

Contract: Permanent

Salary: £21,250 per annum

Employer: EY

Closing Date: Monday 12 June



You will work closely with colleagues across borders, using EY tools and networks to solve complex business and tax problems. By combining the power of EY's tax experience with innovative technology, you can help us transform our clients' tax function of the future. You will complete a fully paid for professional qualification with the Institute of Chartered Accounts of Scotland (ICAS).

CUSTOMER SERVICE SPECIALIST - MODERN APPRENTICESHIP - 12 POSTS - 18047

📅 8/12/2022

Contract: Fixed Term - 18 months

Salary: £19,000 per annum

Employer: JP Morgan Chase

Closing Date: Tuesday 31 January



Starting in September 2023, you will be based at our state of the art contact centre at South Gyle. Throughout the programme, you will have the chance to study a variety of interesting modules and develop important skills such as handling complaints, understanding customer service principles and much more. You will work towards SCQF Level 6 in Customer Services.



What are the options? College

- **Full Time**

Or

- **School / College Partnership**
- Period 5 & 6 on Tuesday + Thursday at college, Period 1 Monday in school
- Check where course is taking place – can you get there? Bus tokens provided
- Good way of getting experience of college before leaving school
- Highers/Nat 5/Foundation Apprenticeships
- Must apply for College courses in February- August is too late – **CHECK ENTRY REQUIREMENTS!!**
- Must apply online at www.edinburghcollege.ac.uk/Schools/ **by 12th March**
- **make back up choice for school**



What are the options?

Might University be for me?

Some young people want to go to university, or to keep their options open to go later.

College route

- 1/3 of all Edinburgh universities students come from Edinburgh college

School route

- Take Highers and Advanced Highers at school

Edinburgh College Post School & SCP

Alan Binnie

School College Partnership Coordinator (Granton Campus)

Working with more than

**1,000 INDUSTRY
PARTNERS**

to provide you with the best
possible opportunities
for employment



For the future you want

700
COURSES

4 Main Campuses- Milton
Road

Granton

**Industry experienced
lecturers teaching in
industry approved facilities**

Midlothian
Sighthill

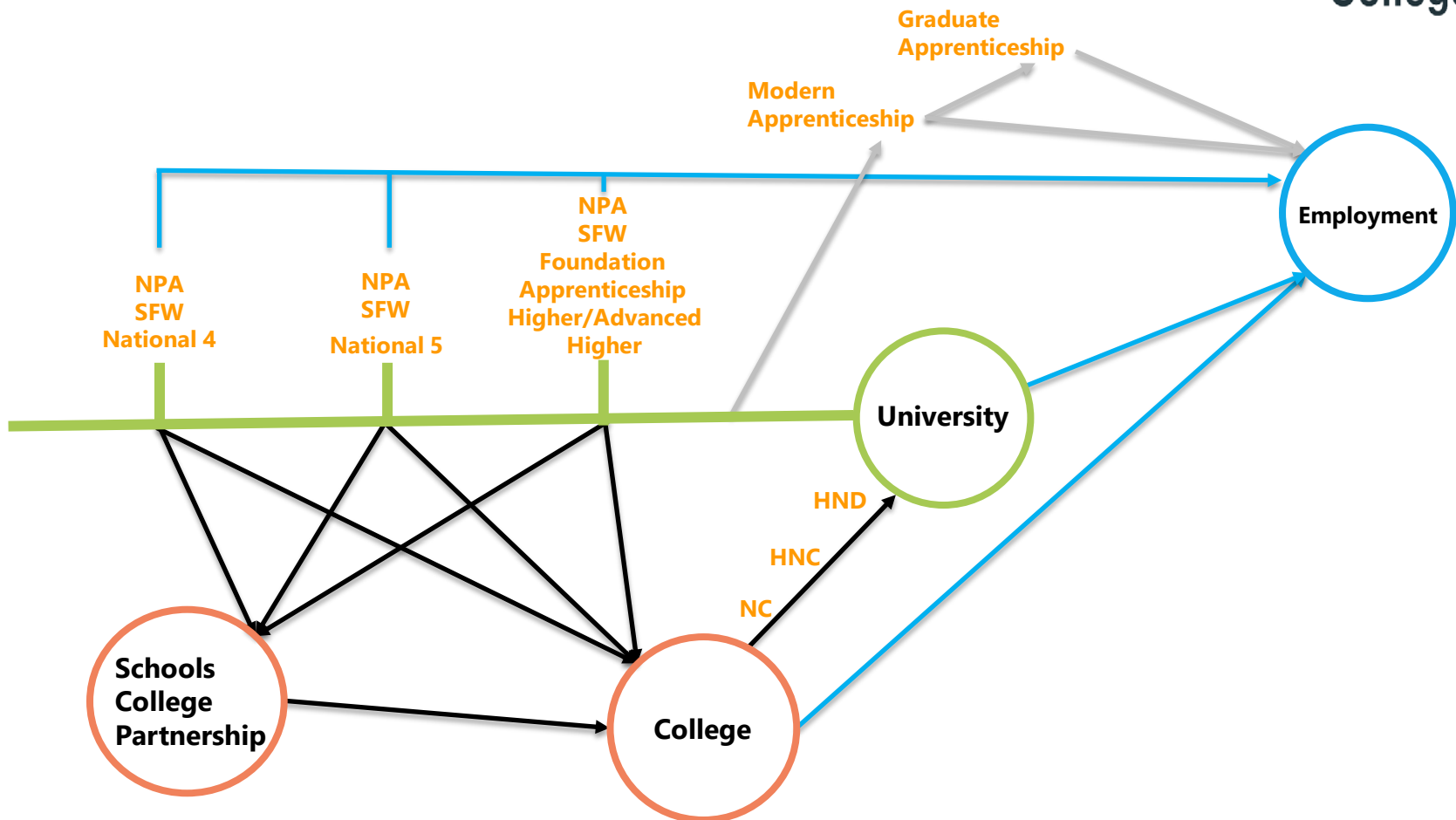
3.5

Days per week

Approx. 20 hours
of learning on
full-time courses
per week

VOCATIONAL COURSES

For the future you want





HAIR & BEAUTY COURSE PROGRESSION

Our course portfolio and progression routes may be subject to alteration.

Schools College Partnership (SCP) courses

College Courses

Professional Courses



Optional Cross-Progression

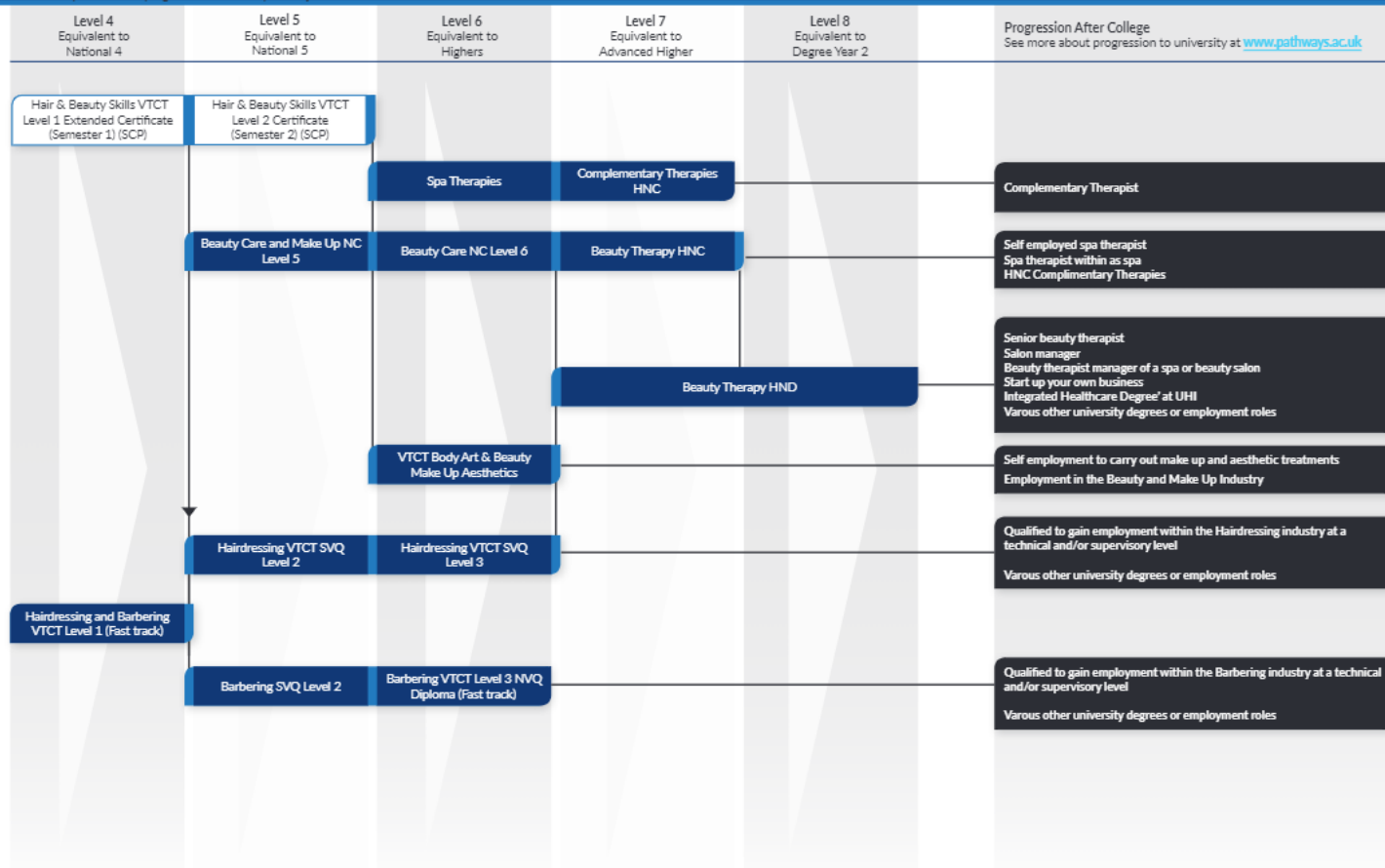


Progression After College



Same level progression

Please find our guide to our progression maps on the next page.



lecturers and

For the future you want

Schools College Partnership



Additional choice of subjects not offered in school

Replaces one school column
choice
Offer progression onto full time courses

Entry
Level



SCQF
Level 7

For the future you want

SCP Benefits

- Explore employment pathway while at school
- Gain a qualification
- Enhance CV, College or UCAS applications
- Develop confidence & independence
- Enhanced post-school options



SCP Subject Areas

Cookery &
Hospitality

Sport
&
Fitness

Health &
Social Care

Construction

Engineering

Automotive

Hair &
Beauty

Social
Sciences

Photog
raphy

Music &
Sound
Production

Langu
ages

Performin
g Arts

For the future you want

Routes into Education or Employment

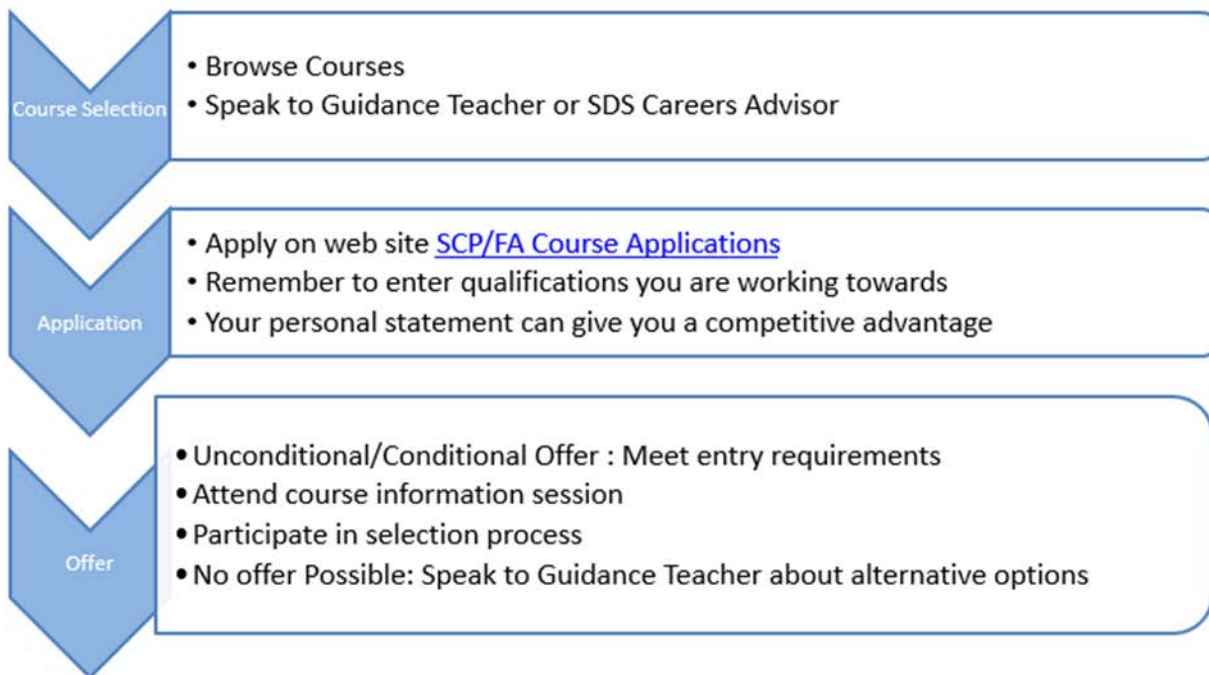
- A range of courses from levels 1 to 4.
- Delivered in a supportive environment for pupils with ASN, barriers to learning and/or have received support at school.

ROUTES combines practical, indoor and outdoor sessions to enable pupils to develop a range of skills and support positive transition from school to college.

The aim is to support students to :

- make the leap from school to college
- become more confident and independent learners
- gain skills & qualifications to move on to another college course or into work

Application Process for SCP/FA



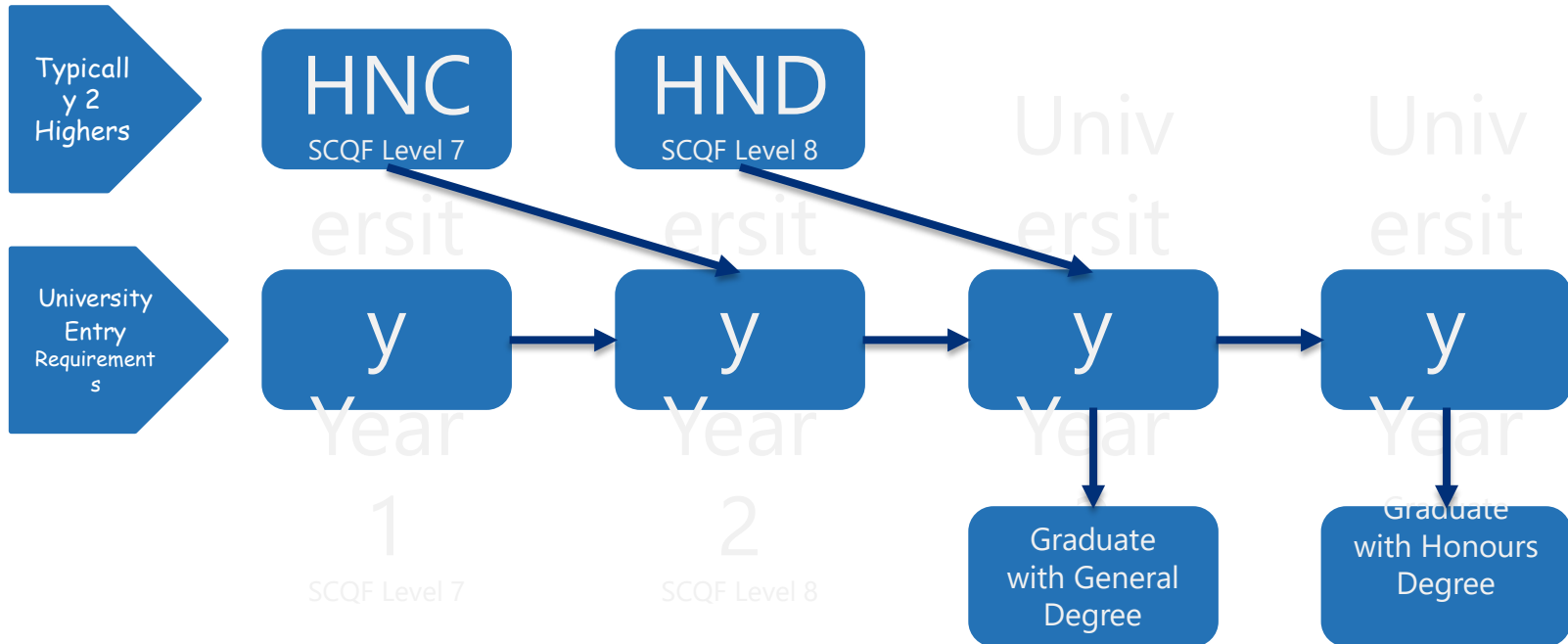
For further information contact: Schools@edinburghcollege.ac.uk
or call the SCP Helpline on 0131 297 8649

**Applications
open –**

**23rd January
for 2024/25
session**

*Please put
current school
in “Previous
School”
Question on
application*

For the future you want



For the future you want

Curriculum Areas

Creative Industries

Construction Trades | Electrical & Mechanical
Engineering | Civil Engineering | Railway
Engineering | Automotive | Renewables | Building
Services | Plumbing | Electrical | Fire & Security

Construction, Engineering, Built Env

Broadcast Media & Film | Music & Sound
Production | Art & Design | Computing |
Performing Arts Studio Scotland (PASS)

Health Professions & Social Care

Health Care | Social Care | Dental | Pharmacy |
Childcare | Sport & Fitness | Integrated
Curriculum Studies

Tourism Hospitality & Business

Enterprise & Commerce | Professional Cookery | Hospitality
Retail & Events | ESOL | Tourism & Modern Languages



Associate Student Degrees



Queen Margaret
University



Edinburgh Napier
UNIVERSITY



Formal agreement between College & University

Students dual enrolled at both institutions

Complete HNC (year 1 at College)

Complete HND (year 2 at College)

Guaranteed University Progression to year 3 of degree course

For the future you want

Funding



How to Apply

1

Browse
Website

2

Apply Online
from January

3

Audition
Interview
Assessment

4

Conditional
Unconditional
No Offer
Possible

5

Apply for
Funding

6

Complete
Self-
enrolment

no-wrong-path

For more information e-mail the school Team:

Schools@edinburghcollege.ac.uk

Or call the SCP helpline 0131-297-8649



Pupils should do some research to help with future planning/goals

Useful websites to help are...

- For **Career options:** www.myworldofwork.co.uk
- **College:** [For School Pupils | Edinburgh College](#)
- **Apprenticeships:**
<https://www.apprenticeships.scot/>
[Opportunities Board \(theguarantee.org\)](http://theguarantee.org)
- **University**
<https://digital.ucas.com/search>
www.UCAS.com
www.discoveruni.org.uk

Cara Davidson (SDS): Available Support and Tips

What help is available?

Pupils can **book an appointment** through emailing me or letting their guidance teacher know they would like an appointment. My email is: Cara.davidson@sds.co.uk

I will also be offering **lunchtime subject choice drop ins** for S4 /S5 on Mondays:
22nd January, 29th January, 5th February

SCP (college) application support session

Monday the 29th January periods 5 and 6 in the library

Please note SCP applications have a 6 week application window and your young person should apply within this –it is important not to leave it until the last minute!

If they would like to attend this support session they can email me or speak with their guidance teacher so their name is added to my list

Cara Davidson (SDS): Available Support and Tips

Tips for Course choice

- If you may want to go to College or University **look up the entry requirements** to the course you are interested in and check for **essential subjects** – eg: law requires Higher English; Nursing Higher English and 1 science
- Think about **other subjects that could be useful** – these are not essential but may be helpful ,
- **Apprenticeships and employment** require basic maths and English and depending on the type of apprenticeship they may ask for relevant subjects (work experience will also be really important) – have a look at Apprenticeship.scot to help research.
- There is now the option of **SCP (School college partnership courses) and foundation apprenticeships** –these offer options in unique areas such as costume, mechanics...etc
- **Understand what the different qualifications mean** - A foundation apprenticeship takes 2 years and counts as a Higher Grade B , An NPA is not counted as a higher for most universities



What are the options? School

- *Full Time School OR School / College Partnership*

You are choosing to join and lead our community:

- Modelling our values: respect, equality...
- Wearing school dress
- Leadership: participating or leading wider activities

You are aiming for high standards:

- Full set of qualifications (usually 5 in S5)
- Punctuality / Attendance
- Deadlines / Homework

Course
choice
booklet on
Teams and
website



Boroughmuir High School: S4-6 Curriculum & Courses Summary 2021-22

S4 Curriculum National 3,4,5

Administration and IT
Art & Design
Biology
Business Management
Chemistry
Computing Science
Design & Manufacture
Drama
Economics
Engineering Science
English
French
Geography
German
Graphic Communication
Health & Food Technology
History
Mandarin
Maths – National 4/5 or
Applications of Maths – N4
Media Studies
Modern Studies
Music
Physical Education
Physics
Practical Cookery
Practical Woodwork
RMPS
Science
Spanish

S4 Core Curriculum

- PE
- PSE
- Wider Achievement Awards in
- 1) Health & Wellbeing
- 2) Religion, Belief & Values

S5 or S6

College Courses

Schools College Partnership (SCP)
Foundation Apprenticeship
Courses - Various

National 5 or SCQF Level 5 NPA

Art & Design
Business Man.
Computing Science
Digital Media
English
Maths N5
Applications of Maths
HFT
Practical Cookery
Practical
Woodworking
Media Studies
Photography
Practical Science
PE
Sports Leadership

Higher (H) or SCQF Level 6 NPA

Art & Design
Biology
Chemistry
Computing Science
Data Science
Digital Media
Design & Manufacture
Drama
Economics
English
Engineering Science
French
Geography
German
Graphic Communication
HFT
History
Human Biology
Mandarin
Mathematics
Applications of Maths
Media Studies
Modern Studies
Music
PE
Philosophy
Photography
Physics
RMPS
Spanish
College Courses

Rectangular Snip

S5 Core Curriculum
Career Management
Skills – PSE/Assembly – Study

S5 H to S6 AH

S6 Core Curriculum
PSE – Assembly – Study

S6 only

College Courses

Schools College Partnership (SCP)
Foundation Apprenticeship

S6 Advanced Higher (AH)

Art & Design
Biology
Business Management
Chemistry
Computing Science
Database Design & Programming (Oracle)
Design & Manufacture
Drama
Engineering Science
English
French
Geography
German
Health and Food Technology
History
Mandarin
Mathematics
Mathematics of Mechanics
Mathematics - Statistics
Modern Studies
Music
Physical Education
Physics
RMPS
Science Baccalaureate
Spanish



What are the options?

School Courses: N5s, Highers

Advanced Highers only in S6

Each course usually consists of:

- Coursework/ assignment eg 30% English
- Examination in May eg 70%



e.g. Higher English

- Exam (70% of grade):
 - Paper 1 RUAE (30 marks)
 - Paper 2 Critical Reading - 1 Scottish textual analysis (20 marks) + critical essay (20 marks)
- Folio of Writing (30% of grade):
 - editing Discursive / persuasive piece
 - drafting first personal-reflective, or creative, piece
- Spoken Language – continued assessment of four elements of Spoken Language Course Award, through solo and group talk. Must be passed by end of March to gain a course award



Structure of the Senior School

28 period week

- 5 subjects (5 hours per week)
- Column E / College – Tuesday / Thurs pm
- Registration / Friday assembly for wellbeing
- + 3 periods:
 - Personal Social Education (PSE)
 - Leadership qualification
 - Study period (optional PE)



What to consider when choosing subjects...

- 8 subjects → 5 subjects
(x3 periods/wk) (x5 periods/wk)
- Play to strengths
- Workload
- Entry requirements give best chance to achieve
- Take small steps to Highers (get N5 As & Bs first)
- Progression - avoid 'crashing'

<https://www.sqa.org.uk/sqa/91419.html>



S4 and S5

Course Choice Website Pupil Guide

- **TOOLS** = TimeTabler Options On-Line System
- Pupils issued in PSE with
 - Course Choice booklet (via Teams)
 - Website help guide (via Teams)

<https://www.studentoptions.co/Senior-BOR>



Process of Course Choice

- ❖ January: Course Choice assembly, parents evening, booklet and information issued
- ❖ PSE Check in with guidance teacher
- ❖ **19th February** Final choices made online using TOOLS (remember to choose your subjects in order of preference)
- ❖ Students should make applications to college online by **12 March**
- ❖ Courses confirmed June – all courses require viable numbers in order to run
- ❖ Re-course if necessary in August

Keep your login
details safe and
secure

We will try to ensure as many first-choice subjects are achieved as possible. If we have to use a reserve choice subject, we will inform you of your allocated subjects as soon as possible. Please consider your reserve choice subjects carefully.

Take note of the course requirements for each subject. These are listed in the course choice booklets. Please think carefully about courses that you think you will be successful in, that you may require for the future and what you will enjoy!

Some courses are for **S6 only**.

New S5 pupils choose **5 subjects** and **2 reserve subjects (labelled as R & S)**. Choose subjects in priority order with **1 = highest priority**. An example is below.

Choice No.	Subject chosen
1	English H
2	Maths H
3	Music Higher
4	Computing H
5	Pract Cook Hosp
R	Media Higher
S	French H

Into
S5

Into S6

New S6 pupils usually choose **3 to 5 subjects**. Choose subjects in priority order with 1 = highest priority. The TOTAL number of subjects must be 5. Do this by **selecting one or two STUDY subjects**. You then select 2 reserve subjects (R & S). See S6 example below.

Choice No.	Subject chosen
1	Art H
2	Biology H
3	Bus Man AH
4	Study1
5	Study2
R	RMPS H
S	Music Higher



What must I do now?

1. **Speak to guidance teacher** (especially if thinking of leaving to get support from us and Skills Development Scotland (SDS))
2. **Research options**
3. **Speak to Careers and SDS advisers**
4. **School course choice deadline 19th February**
5. **You** apply to college **by 12th March** – come to workshop on Friday 22nd / Monday 29th January