



BOROUGHMUIR HIGH SCHOOL

Parent Council Head Teacher's Report – October 2021

Our Vision

To ensure a confident, nurturing & inclusive learning community where ALL achieve their true potential & embrace life's challenges.

Boroughmuir High School National Exams 2021 – analysis

Given the issues around the cancellation of the National exams for the 2nd year and the production and delivery of an Alternative Certification Model (ACM) by the school, I am absolutely delighted at the levels of attainment achieved by our pupils and the professionalism of our staff in delivering the ACM.

I have provided below a summary of some whole school attainment measures in S4, S5 & S6.

Can I extend my warmest congratulations to all our pupils who attained their target. Their commitment and hard work has paid off and given them and the school a portfolio of results to be proud of. For those who have had some disappointments we will do our absolute best to provide them with a way to have another go and allow them to achieve their goals.

Prior to the submission of these grades to the SQA I and the Senior Management Team met with each Curricular Leader where they presented a comprehensive report on the methodology of grade production and the quality assurance processes that had been used to ensure they were an accurate reflection of pupil's demonstrated attainment. This provided me, the City and the SQA with the assurances that proper processes had been followed to ensure fairness for all pupils.

We always look at ways to improve our performance and this is a really strong focus in our quality assurance programme and process of improvement planning.

I am now presenting this attainment summary to the parent council curriculum sub-group to allow them to discuss and ask questions on all aspects of the school's attainment and achievement at whole school and departmental level. This is something we do every year around this time.

Notes for data below:-

All Percentages are taken as a % of the year group roll.

Level 7: Advanced Higher A-C; Level 6: Higher at A-C; Level 5: National 5 grades 1-6; Level 4: National 4 pass; Level 3: National 3 pass.

Boroughmuir SQA Exam Results 2021 - Summary of S4,5,6

	2016	2017	2018	2019	2020	2021	City Average 2021	City Ave 2020	City Ave 2019
By the end of S4									
5@level 3+	96	94	98	97	96	99	83	84	84
5@level 4+	96	94	98	95	93	97	76	76	77
5@level 5+	80	80	77	78	81	78	49	47	44
By the end of S5									
1@level 6+	86	89	90	85	84	89	65	61	59
3@level 6+	67	74	73	69	69	75	46	40	38
5@level 6+	37	50	52	42	48	49	25	21	20
By the end of S6									
1@level 6+	88	93	90	96	93	91	70	67	66
3@level 6+	75	75	80	79	77	81	55	47	49
5@level 6+	60	64	68	70	63	67	42	35	36
1@level 7+	45	53	52	58	51	54	25	28	27

Boroughmuir SQA Exam Results 2021 – S4 Highlights

N5	2021	City ave	2020	2019	2018	2017	2016	2015	2014
5+ A-C	78%	49%	81%	78%	77%	80%	80%	75%	70%
8A	27%		21%	16%	21%	22%	18%	15%	13%
8 A-C	51%		54%	51%	52%	56%	58%	47%	45%

132 pupils were presented for 8 Nat 5s.

112 out of 132= 84% of those presented for 8 achieved 8.

National 3 -or better	2021	City Ave	2020	2019	2018	2017	2016	2015
5+ pass	99%	83%	96%	97%	98%	94%	96%	95%

National 4 -or better	2021	City Ave	2020	2019	2018	2017	2016	2015
5+ pass	97%	76%	93%	97%	98%	97%	98%	96%

Boroughmuir SQA Exam Results 2021 – Higher / AH – Highlights

		2021		2020	2019	2018	2017	2016	2015
			City Ave						
Highers	5A-C	49%	25%	48%	42%	52%	50%	38%	36%
	5A	26%		20%	18%	19%	16%	14%	13%
	3+ A-C	75%	46%	69%	69%	73%	74%	67%	66%
Adv Highers	1AH A-C	54%	25%	51%	58%	52%	53%	45%	38%
	2AH A-C	33%		31%	32%	34%	26%	24%	12%
	3AH A-C	20%		14%	11%	16%	11%	10%	6%

Notes for National Comparison data below.

Virtual Comparator (VC). The virtual comparator consists of a sample group (10x the size of our group) of school leavers from schools in other local authorities who have similar characteristics to the school leavers from our school.

Average Complementary Tariff Points:- at S4 it is effectively the average points total for pupils' 'best 5' subjects
For S5 & 6 it is a more complicated comparison but sets to ensure comparisons are made on the same demand of study.

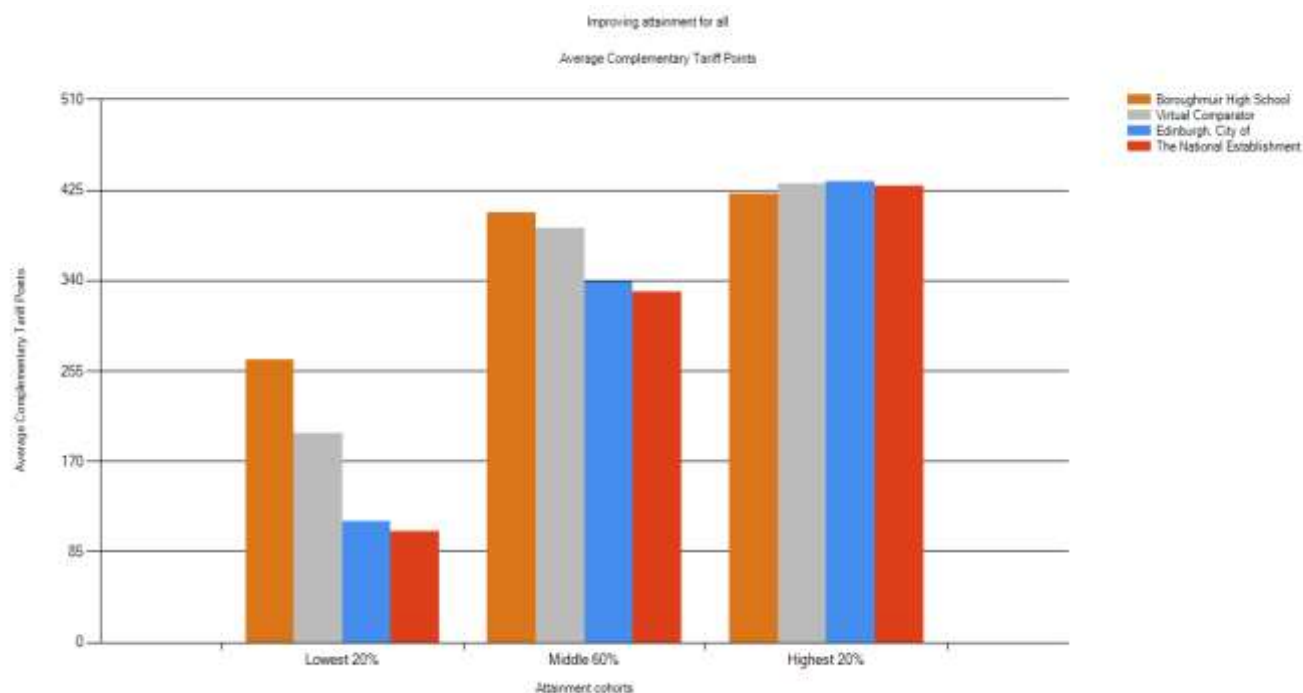
Examples of tariff points for National Qualifications

SCQF Level	Grade	SCQF Points	Tariff Score
7	A	32	480
	B	32	440
	C	32	400
	D	32	380
	Individual units	Varies	17/2*SCQF Points
6	A	24	204
	B	24	182
	C	24	160
	D	24	149
	Individual units	Varies	14/3*SCQF Points
5	A	24	84
	B	24	74
	C	24	64
	D	24	59
	Individual units	Varies	11/6*SCQF Points
4	Course – Pass	24	33
	Added value unit	6	15
	Individual units	Varies	1*SCQF Points

Attainment graphs below are based on highest SCQF awards attained by pupils.

The year group cohort is divided in 3 parts – lowest attaining 20%, middle attaining 60%, highest attaining 20%

S4 Attainment Against Virtual Comparator, City of Edinburgh, National



Note

420 complementary tariff points is max achievable for 5 Nat 5 A passes.. This is what Boroughmuir has in the highest 20% Schools attaining more than this are presenting pupils for Highers in S4.(i.e the VC and the City)

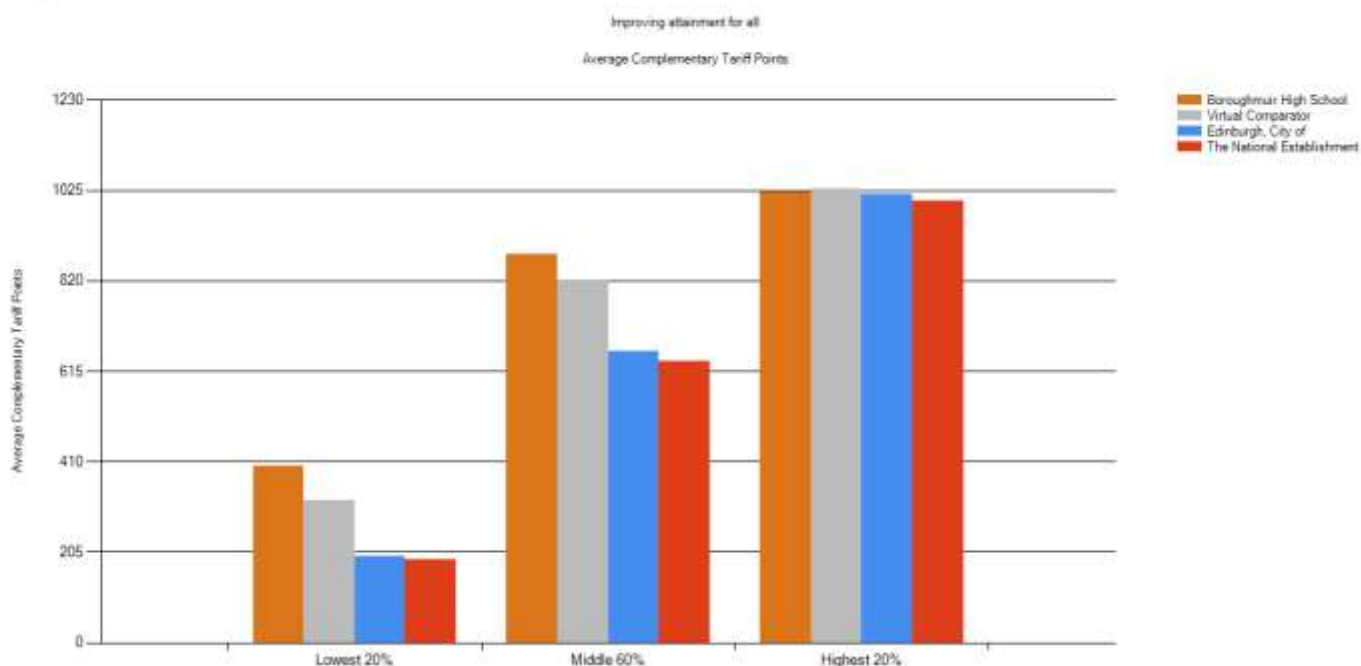
In all measures (except this one) Boroughmuir is ahead of the VC

S4 attainment remains very strong.

National 4 attainment and National 3 attainment for 5+ is excellent and shows the strong focus the school has on ensuring all pupils maximise their potential and have a suite of qualifications at the end of S4.

S5 Attainment Against Virtual Comparator, City of Edinburgh, National

The selected year is 2021



S6 Attainment Against Virtual Comparator, City of Edinburgh, National

The selected year is 2021

