



# S5 Parents' Information Evening

## *Our Vision*

*To ensure a confident, nurturing & inclusive learning community where all achieve their true potential & embrace life's challenges.*



# Content

- Expectations for S5
- Structure of S5
- Structure/assessment of courses
- School support
- Parental support
- Tracking and reporting
- Careers advice





# Senior School Agreement

By coming back to school for S5 pupils are buying into the ethos of the school and are expected to:

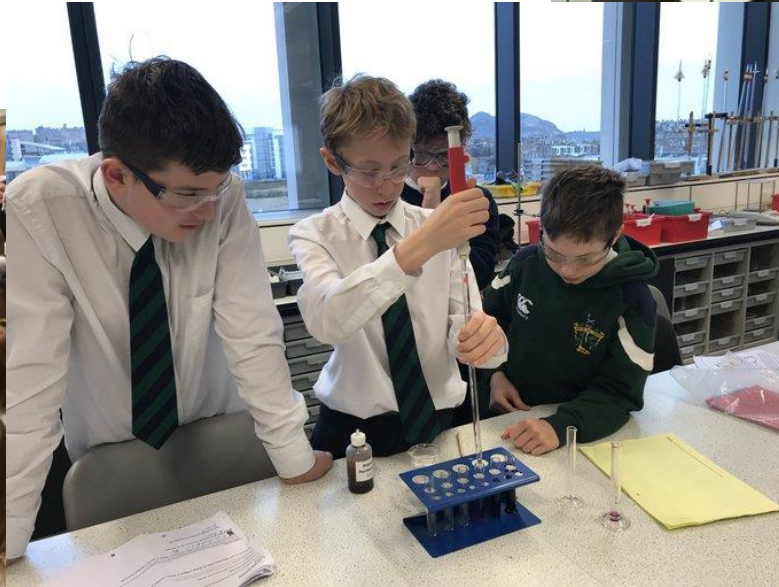
- Continue to have positive relationships
- Attend school and ensure punctuality
- Adhere to the school dress code
- Model our RESPECT code to younger pupils
- Meet deadlines



# Dress code in action!











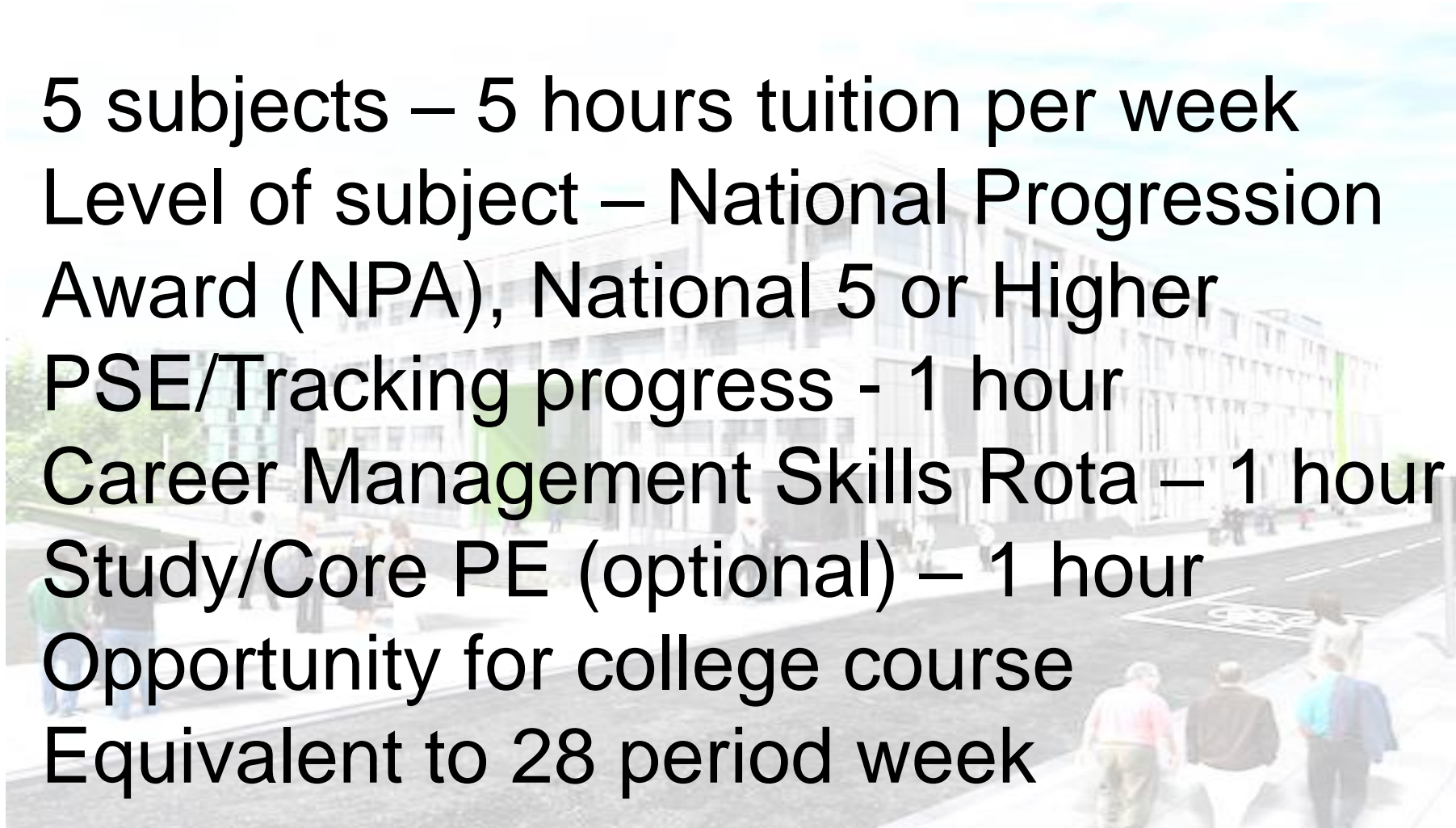
# Why are deadlines important?

- They are there to help pupils manage their workload
- They are there to help teachers manage their workload
- They are needed so that teachers can “authenticate” pupil work and see work in progress and how it develops over time
- If teachers are unable to authenticate pupil work they cannot submit coursework to the SQA
- Please refer to the school senior assessment calendar when available for deadlines



# S5 Structure

- 5 subjects – 5 hours tuition per week
- Level of subject – National Progression Award (NPA), National 5 or Higher
- PSE/Tracking progress - 1 hour
- Career Management Skills Rota – 1 hour
- Study/Core PE (optional) – 1 hour
- Opportunity for college course
- Equivalent to 28 period week





# A Day in the Life of an S5 Student

	Period 1 8.45-9.40	Period 2 9.40-10.35	Period 3 10.55-11.50	Period 4 11.50-12.50	Period 5 1.35-2.30	Period 6 2.30-3.30
MONDAY Reg 8:32-8:45	Study	Spanish	History	English	CMS Rota	Maths
TUESDAY Reg 8:32-8:45	PSE	History	Spanish	Maths	Schools College Partnership	Schools College Partnership
WEDNESDAY Reg 8:32-8:45	Maths	English	English	Study	Spanish	History
THURSDAY Reg 8:32-8:45	Spanish	Maths	English	History	Schools College Partnership	Schools College Partnership
FRIDAY Reg 8:32-8:45	Maths	Spanish	History	English		



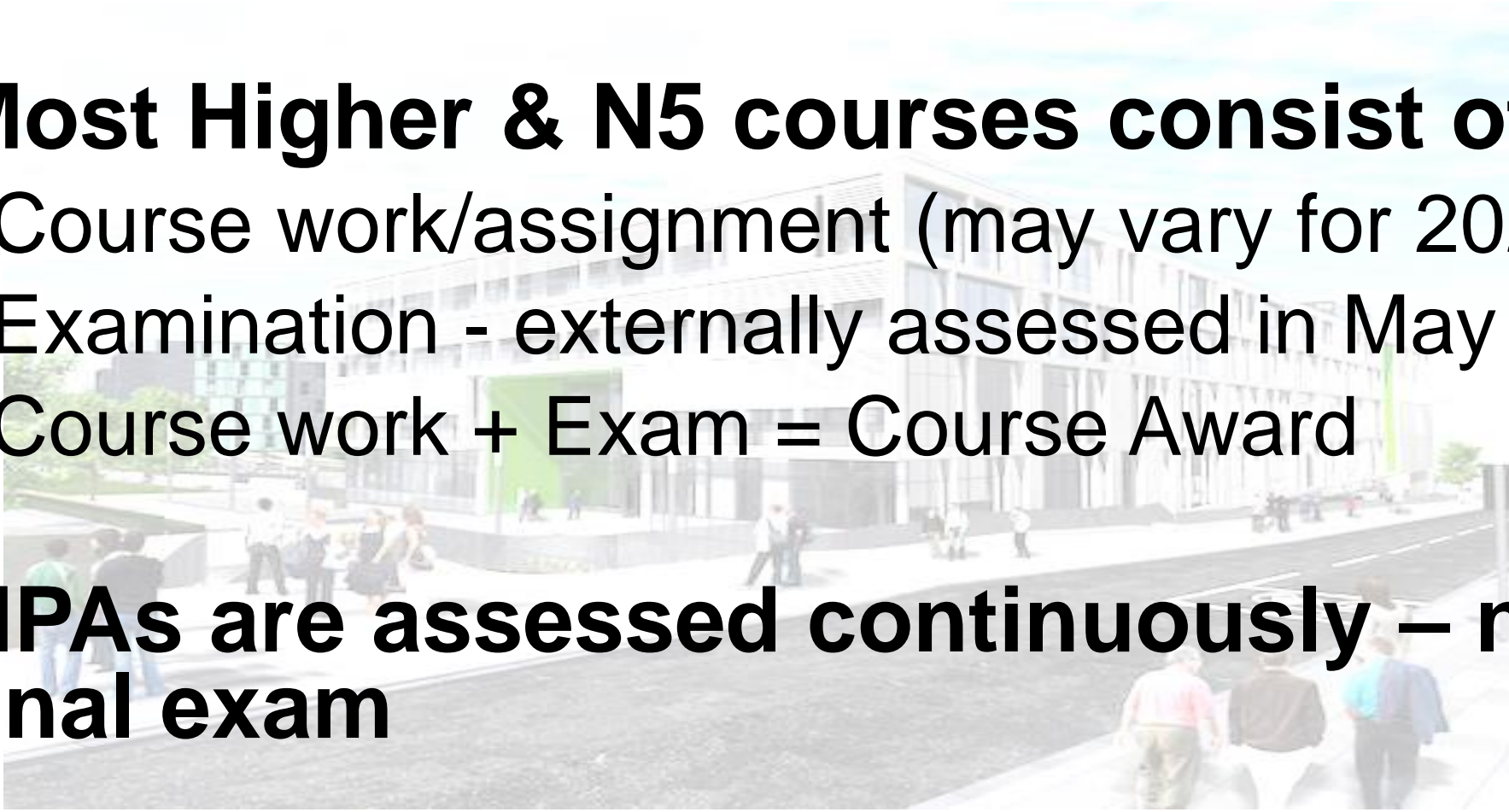


# Assessment of Courses

## Most Higher & N5 courses consist of:

- Course work/assignment (may vary for 2022)
- Examination - externally assessed in May 2022
- Course work + Exam = Course Award

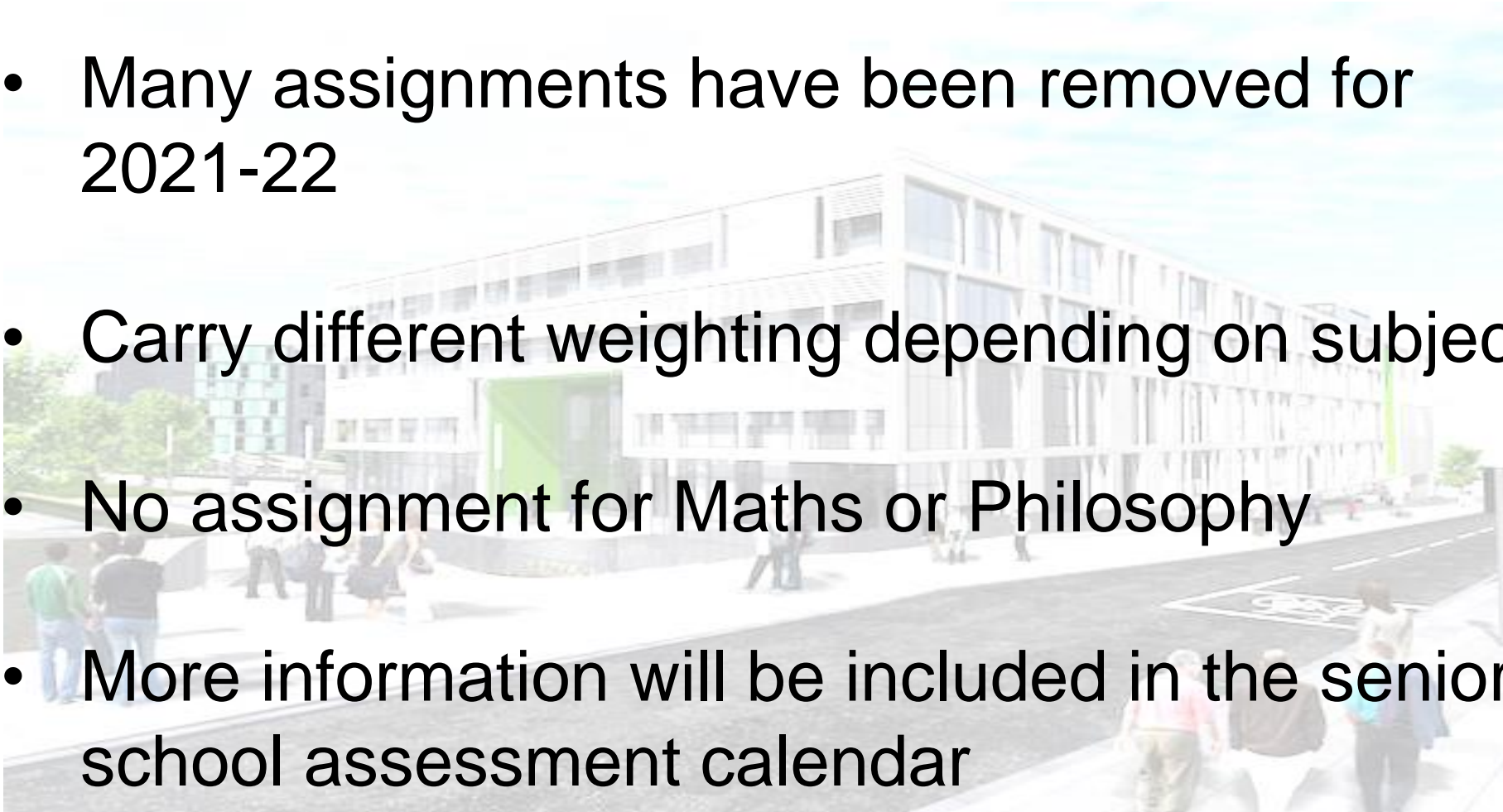
**NPAs are assessed continuously – no final exam**





# Assignments

- Many assignments have been removed for 2021-22
- Carry different weighting depending on subject
- No assignment for Maths or Philosophy
- More information will be included in the senior school assessment calendar







# Support for Pupils

## FIVE HOUSES:

Each House has 2 Register classes e.g 5H1 and 5H2

- Hartington: Ms F Grant (PSL)
- Leamington: Ms C Nisbet (PSL)
- Montpelier: Mr P McIlwaine (PSL)
- Viewforth: Mr C Brandie (PSL)
- Westhall: Mrs L Wallace (PSL)

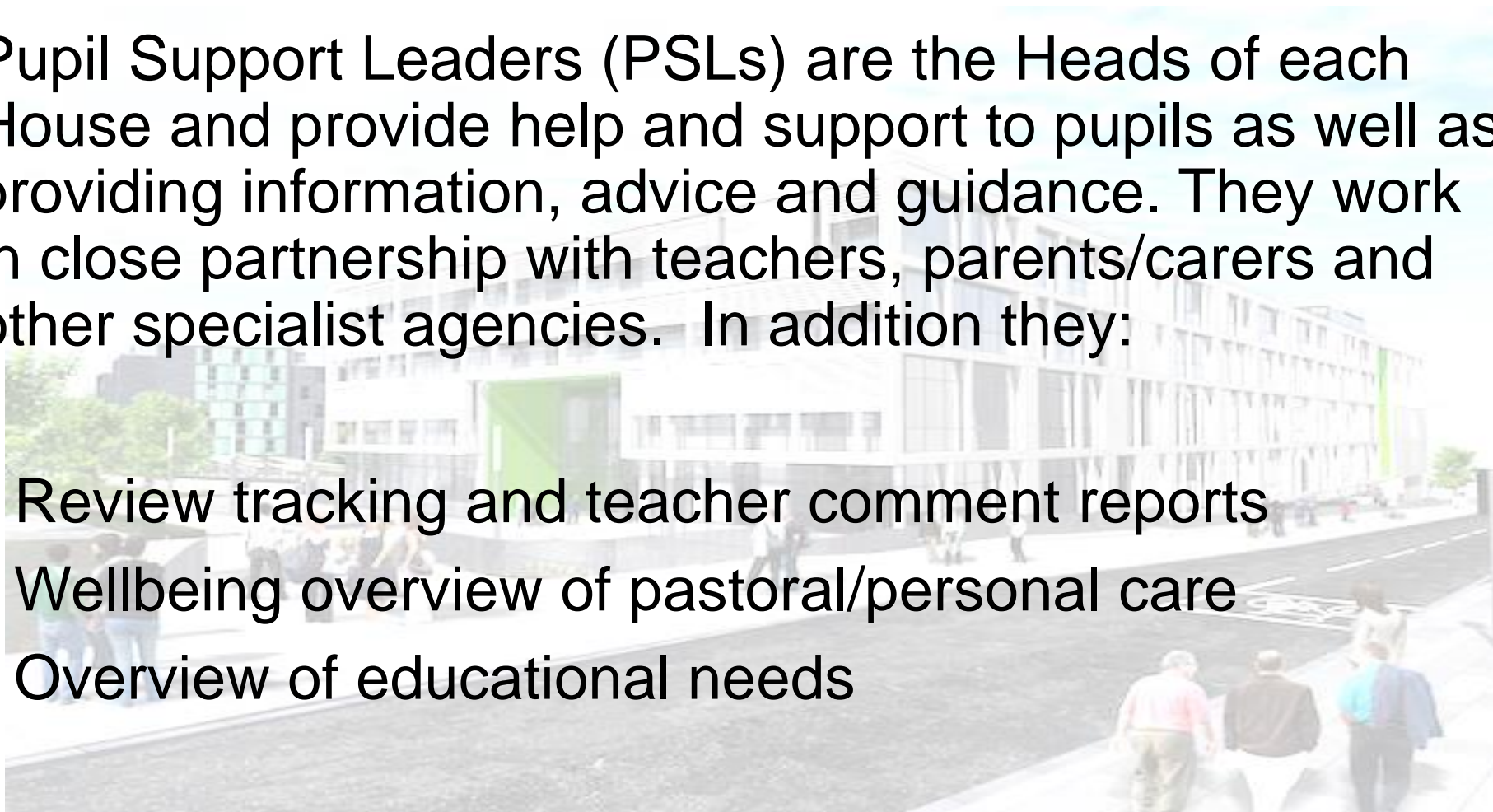




# Support for Pupils

Pupil Support Leaders (PSLs) are the Heads of each House and provide help and support to pupils as well as providing information, advice and guidance. They work in close partnership with teachers, parents/carers and other specialist agencies. In addition they:

- Review tracking and teacher comment reports
- Wellbeing overview of pastoral/personal care
- Overview of educational needs







# Support for Learning

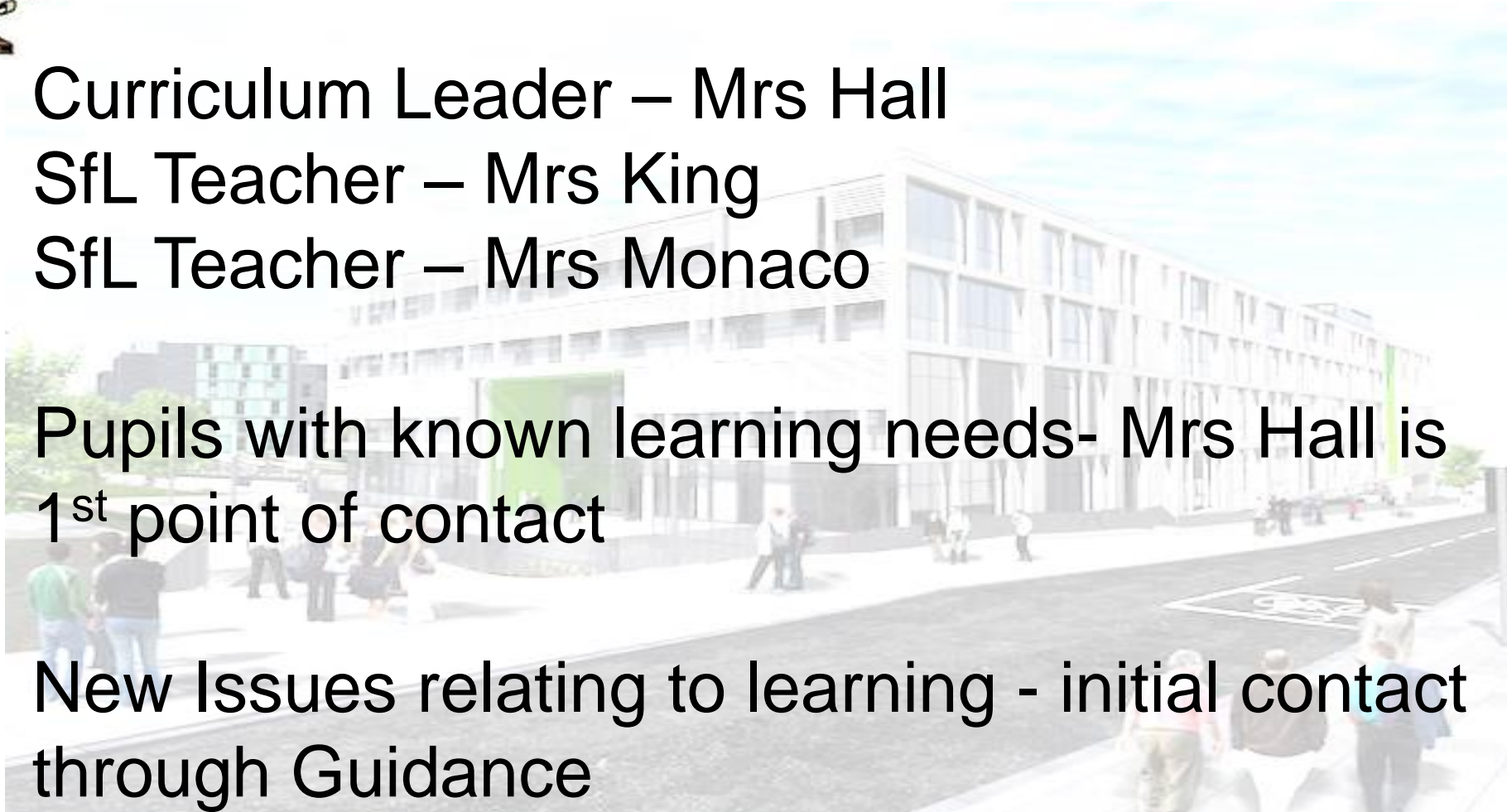
Curriculum Leader – Mrs Hall

SfL Teacher – Mrs King

SfL Teacher – Mrs Monaco

Pupils with known learning needs- Mrs Hall is  
1<sup>st</sup> point of contact

New Issues relating to learning - initial contact  
through Guidance





# School Support

- Study Techniques in PSE/Career Management Skills Rota
- Tracking and monitoring in PSE
- **“Teams”** on Office 365 – course notes/assignments
- Subject Timelines issued – deadlines
- Senior school assessment calendar
- After school/lunchtime sessions – when able to run
- **“Scholar”** password for access to materials on **Scholar**



# Homework and Home Study

## SCHOLAR



Heriot Watt University SCHOLAR courses have been running for over 20 years and offer 37 high quality online courses for Scottish schools aligned to the SQA curriculum at National 5, Higher and Advanced Higher level. Each pupil is provided with their own username (their SCN number) and a password.

### Available Courses

Science and Mathematics			
	N5	H	AH
Applications of Mathematics	✓	✓	
Biology	✓	✓	✓
Chemistry	✓	✓	✓
Computing Science	✓	✓	✓
Human Biology	**	✓	**
Mathematics	✓	✓	✓
Physics	✓	✓	✓

Languages			
	N5	H	AH
English	✓	✓	✓
ESOL	✓	✓	**
French	*	✓	✓
Gaelic	*	✓	
German	*	✓	✓
Mandarin	✓		
Spanish	*	✓	✓

Business			
	N5	H	AH
Accounting		✓	✓
Art and Design		✓	
Business Management		✓	✓
Economics		✓	✓
Psychology		✓	**

\* Please note: these National 5 courses are support materials only.

\*\* Please note: SQA do not provide a qualification for this subject at this level.

# Homework and Home Study



Bitesize

Home

Daily lessons

Learn

Support

Careers



[Application of Maths](#)



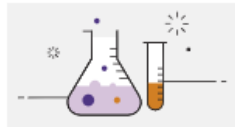
[Art and Design](#)



[Biology](#)



[Business management](#)



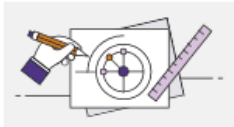
[Chemistry](#)



[Computing Science](#)



[Dance](#)



[Design and manufacture](#)



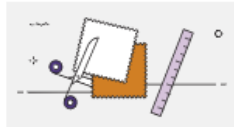
[Drama](#)



[Engineering science](#)



[English](#)



[Fashion and textile technology](#)



[French](#)



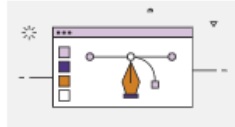
[Gaelic \(Learners\)](#)



[Geography](#)



[German](#)



[Graphic communication](#)



[Health and food technology](#)



[History](#)



[Hospitality](#)



[Maths](#)



[Modern Languages](#)



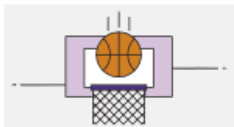
[Modern Studies](#)



[Music](#)



[Music Technology](#)



[Physical Education](#)



[Physics](#)



[Religious, moral and philosophical studies](#)



[Spanish](#)



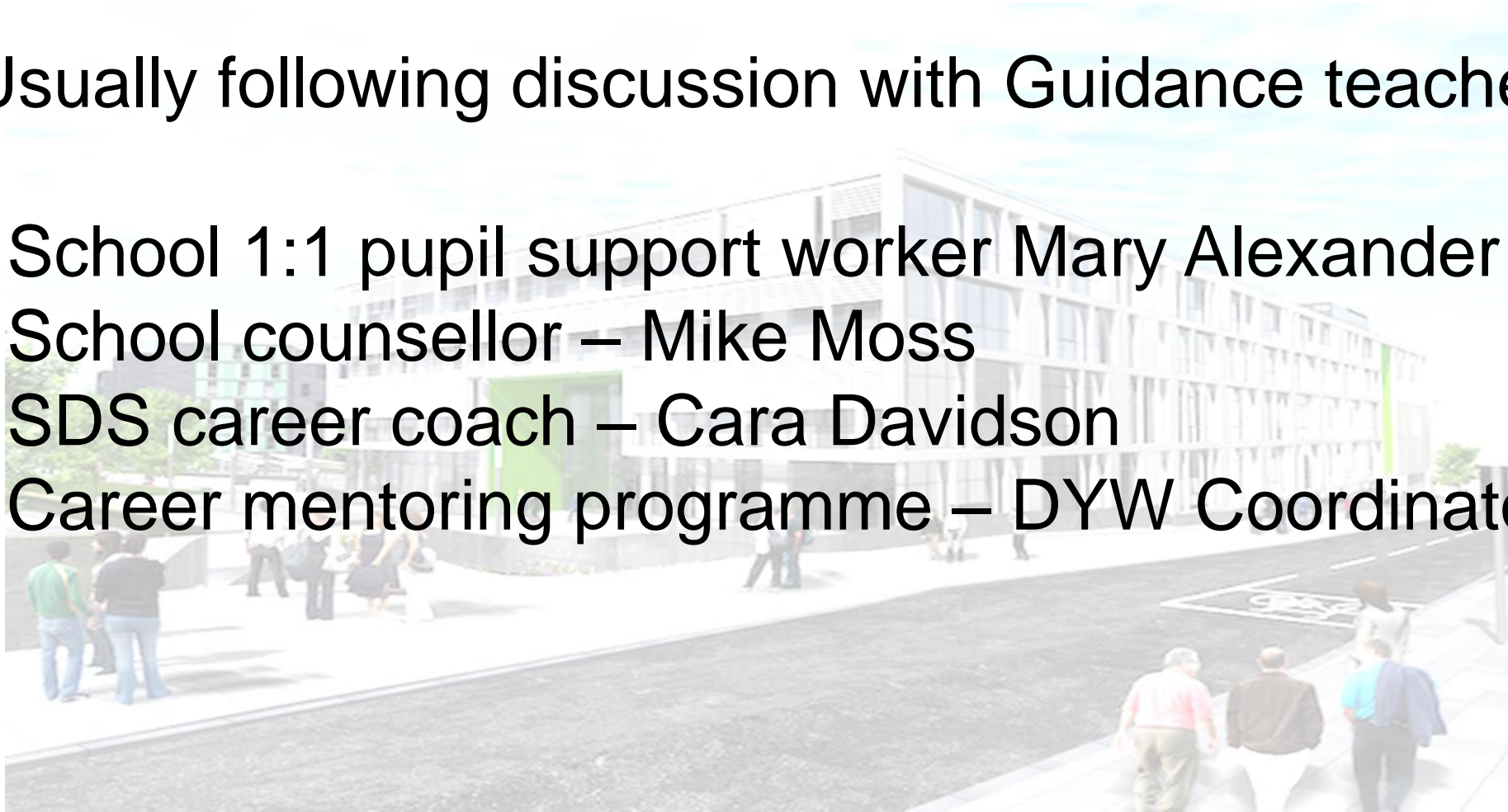
[Technologies](#)



# Additional School Support

Usually following discussion with Guidance teacher:

- School 1:1 pupil support worker Mary Alexander
- School counsellor – Mike Moss
- SDS career coach – Cara Davidson
- Career mentoring programme – DYW Coordinator







## Careers Adviser Contact Details

Cara Davidson

Email: [Cara.Davidson@sds.co.uk](mailto:Cara.Davidson@sds.co.uk)

Call: 0131 376 2243 (please leave a message)

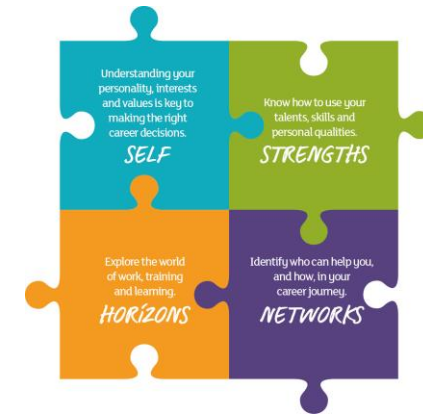
Text: 07787276231

Available Monday – Friday (careers office at back of library)

Standard working hours 9am to 5pm

(available at other times via negotiation)

Careers Advice and Guidance will be offered over the telephone or via email



# SDS support continues after school – for you and your young person

- Available for all, service is free
- Local careers centre is at 79 Shandwick Place in the West End

You can also find SDS on Facebook  
[Facebook.com/SDSEdinburgh](https://www.facebook.com/SDSEdinburgh)





# How can parents help support S5 pupils?

- Discuss expectations of senior school with pupils
- Help with organisation of school work/folders jotters
- Provide a place to work- bedroom/ public room
- Be familiar with course structure:- [www.sqa.org.uk](http://www.sqa.org.uk)
- [www.boroughmuirhighschool.org/the-curriculum/](http://www.boroughmuirhighschool.org/the-curriculum/)
- <http://boroughmuirhighschool.org/wp-content/uploads/2020/10/S56-Subject-Resources-2020-21.pdf>
- <https://www.npfs.org.uk/downloads/category/in-a-nutshell-series/highers-in-a-nutshell/>
- Past papers/Success guides
- <https://education.gov.scot/parentzone/learning-at-home/Supporting%20study>





# Other useful Parent/Carer Resources

## Research/Support

- My Kids Career  
[www.mykidscareer.com/](http://www.mykidscareer.com/)
- My World of Work  
[www.myworldofwork.co.uk/parents](http://www.myworldofwork.co.uk/parents)
- DYW – E resources  
[www.dyw.scot/edyw.html](http://www.dyw.scot/edyw.html)
- Digital World  
[www.digitalworld.net/](http://www.digitalworld.net/)
- Articulation Routes  
[www.pathways.ac.uk](http://www.pathways.ac.uk)

## Opportunities

- Apprenticeship.Scot  
[www.apprenticeships.scot/](http://www.apprenticeships.scot/)
- The Guarantee  
[www.theguarantee.org/](http://www.theguarantee.org/)
- SDS Edinburgh Facebook  
[www.facebook.com/SDSEdinburgh/](https://www.facebook.com/SDSEdinburgh/)





# Tracking Pupil Progress

- Tracking reports in Sept/March
- For the September tracking an indication of progress will be issued rather than working and target grades
- Subsequent reports will have a target grade and working grade:
  - **Aspirational** target grade = TG
  - **Working grade = WG – this grade gives parents the best indication of what level a pupil is working at but is not an estimate grade, it reflects work completed at the time of writing**
- Guidance teacher / subject teachers will discuss discrepancies with pupils regularly
- Full report mid/late November
- These will be delivered via pupil post/text message



# Important dates

- Sept Tracking Report - issued the first week of October
- Full Progress Report – by pupil post mid November 2021
- S5 Parents' Evenings:
  - Thursday 10 February **5H1, 5L1, 5M1, 5V1 & 5W1**
  - Tuesday 22 February **5H2, 5L2, 5M2, 5V2 & 5W2**
- Prelims - 14-27 January 2022
- Proposed SQA Exam diet 26 April-1 June 2022 (we will update you if this changes)