

## Which Skills will I develop?

The course will focus on developing critical thinking skills as well as a wide variety of other skills examples include:

**Literacy:** reading, writing, listening and talking,

**Thinking:** remembering, understanding, applying the things learned to real life situations, and analysing and evaluating viewpoints as well as developing your own ideas and opinions.

**Health and Wellbeing:** learning about themselves and what they think is important.

**Numeracy:** creating graphs, presenting information, calculating percentages

The added value unit/assignment will focus on the development of research skills and using the information gathered to present findings and conclusions in a reasoned manner.



## What happens if I don't study RMPS at National level?

All pupils in Boroughmuir will still attend RMPS in a rota in S3 and S4.

During these rota classes you will be working towards the SOA's Religion, Beliefs and Values award and participating in the Youth Philanthropy Initiative

### S3 Unit 1: Values in Action and YPI

Pupils will put their values into action through engagement with local charities. We will participate in the YPI and create a presentation on a local charity of your choice, the winning presentation receives £3,000 to present to their charity

### S4 Unit 2: Investigating Religion and Belief

Following on from S3, we will investigate an issue that is Religious or moral that has an impact on the local community. We will look at issues that affect the community and what motivates peoples actions from a religious, philosophical and psychological perspective. You will choose one issue that is important to you and investigate this further.

## Boroughmuir High School



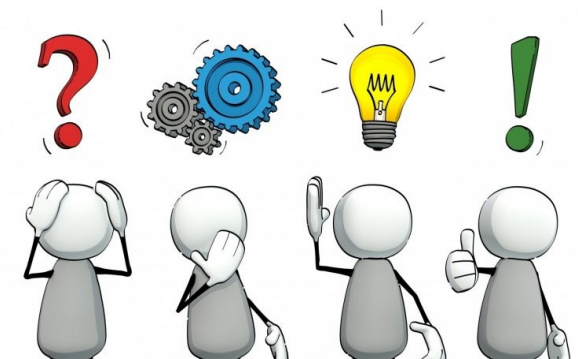
## Why Choose Religious, Moral and Philosophical Studies?

Any questions please contact Mr Igoe or Ms O'Thy at:

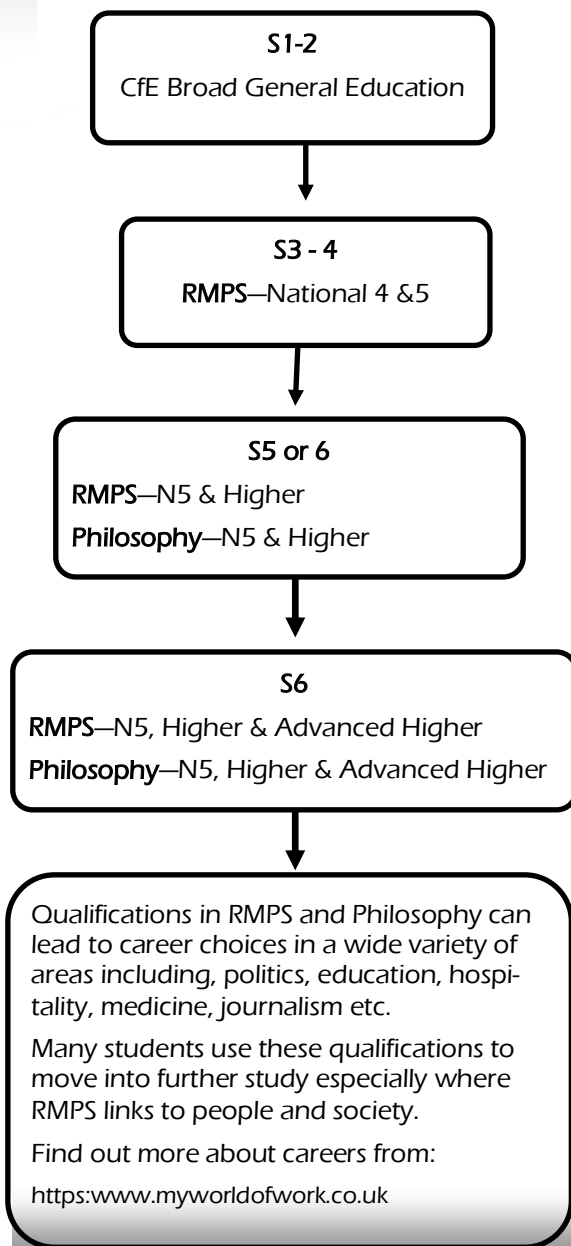
Boroughmuir High School  
111 Viewforth  
Edinburgh  
EH11 1FL

Phone: 0131 229 9703

E-mail: [admin@boroughmuir.edin.sch.uk](mailto:admin@boroughmuir.edin.sch.uk)



## Progression in RMPS



## Your questions answered

### What is RMPS?

RMPS is the study of the society in which we live. The Course aims to develop knowledge and understanding of human beliefs, values and behaviour. It focuses on an examination of the religious, moral and philosophical issues that affect the world today. Pupils will examine religious and non-religious viewpoints on the issues and examine how they affect people's lives. Pupils will evaluate these viewpoints alongside developing their own opinions and ideas on the topics.

### What will we study?

There are three units that we will be covering in the course as well as an added value assignment:

#### Unit 1: World religion

The class will examine one religion and examine its values, practices and beliefs. We will choose one religion from Buddhism, Christianity, Islam, Sikhism, Hinduism or Judaism. The focus will be on the impact that the impact that the beliefs and practices have on people in today's world.

#### Unit 2: Morality and belief

Pupils will examine one of the moral issues facing the world today. They will examine religious and non-religious views on the issue and evaluate these, as well as looking at their own

views and opinions. The topics that can be examined are Justice, relationships, environment and global issues, medical ethics and conflict.

#### Unit 3: Religious and Philosophical questions

Pupils will examine topics that look at some of the big questions in life such as where does life come from? Does god exist? The problem of evil and Do miracles happen? We will look at religious and non religious viewpoints on these issues as well as examining personal thoughts and feelings.

#### Added Value Assignment

Pupils will research a religious, moral or philosophical topic or issue of their own choosing. They will have support, but will be expected to do their own research into the issue. At National 4 this will be internally assessed, but at National 5 it will count as 25% of the overall grade.

#### How will we be assessed?

At National 5 the course will be assessed through two components,

The assignment worth 20 marks.

An exam worth 80 marks over 2 hours and 20 minutes.



