
Proposed Extension to Boroughmuir High School



City of Edinburgh Council are in the process of submitting a Planning Application for the new extension to Boroughmuir High School, to increase its capacity and provide further shared facilities.

The new design, located on the Dundee Street end of the existing building, will provide 5 floors of accommodation including 12 new classrooms, offices, and a new ground floor, shared school and community facility.

There will be a mix of technical and general purpose classrooms on each floor of the extension, and each floor will be directly accessible from the main building, with lower floors accessible by stair and passenger lift.

A relocated and enhanced landscaped public walkway will provide a direct link from Dundee Street south to the school entrance and canal.

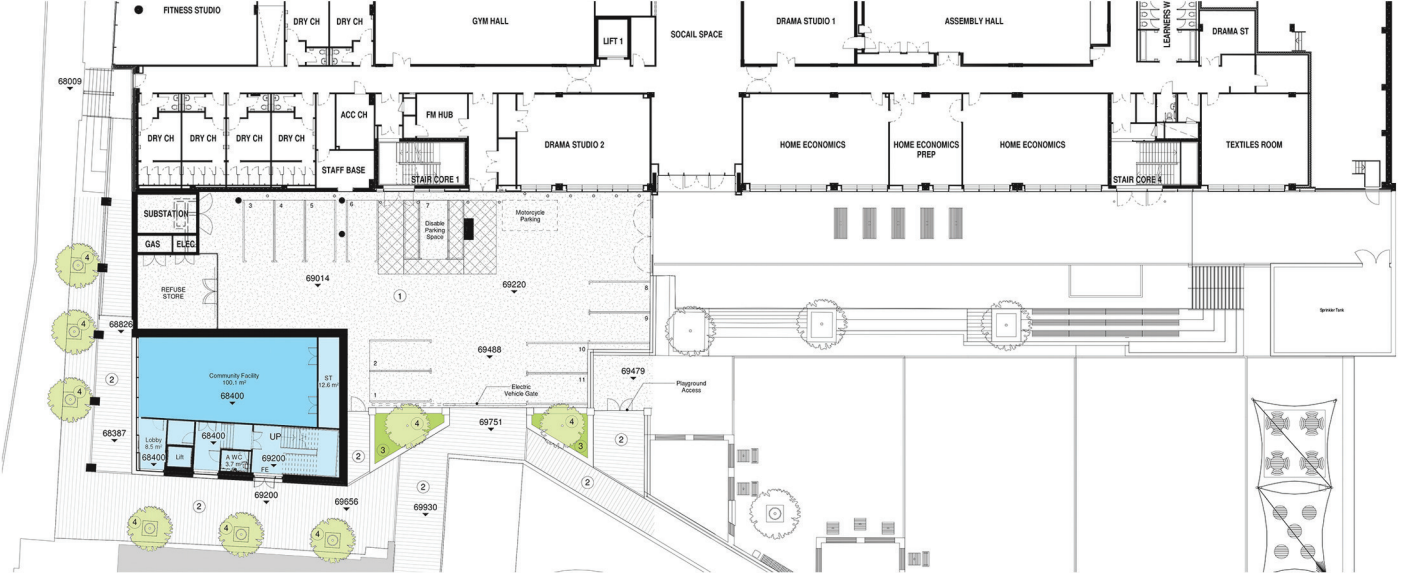
Landscaping and footpaths will be finished to match the current high quality finishes, whilst artwork will form part of the building adjacent to the public link from Dundee Street south.

Further alterations include an increased staff car parking area, reconfigured pupil playground entrance, and increased cycle parking provision.

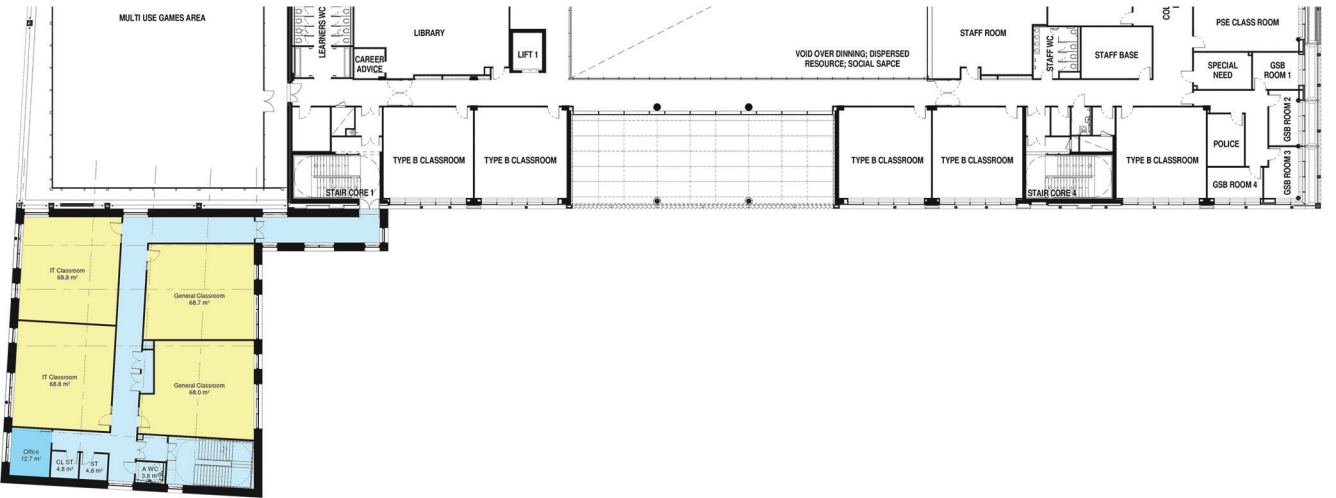
PROPOSED ELEVATIONS



PROPOSED FLOOR PLANS



GROUND FLOOR PLAN



TYPICAL UPPER FLOOR PLAN

boroughmuir.extension@edinburgh.gov.uk