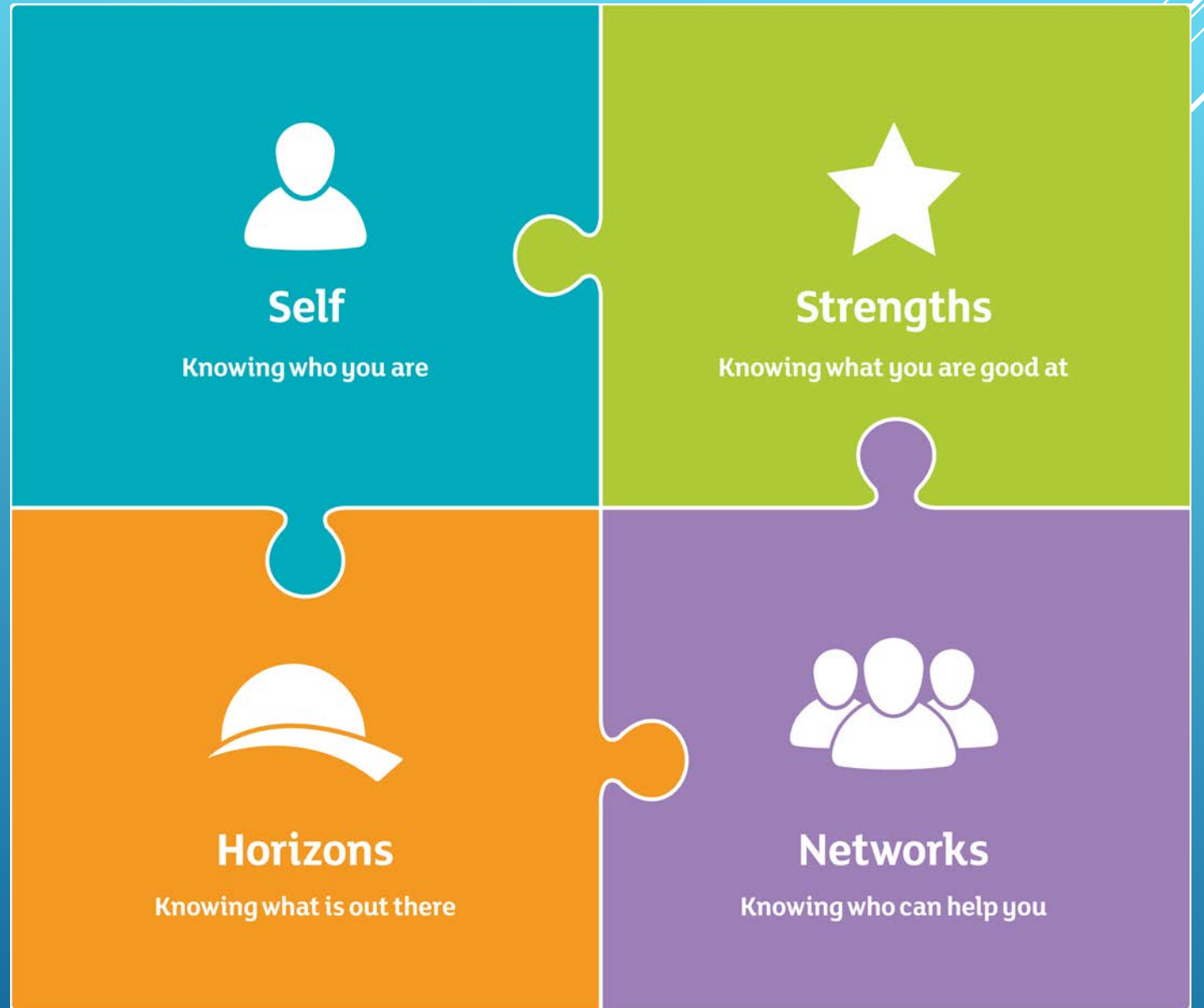




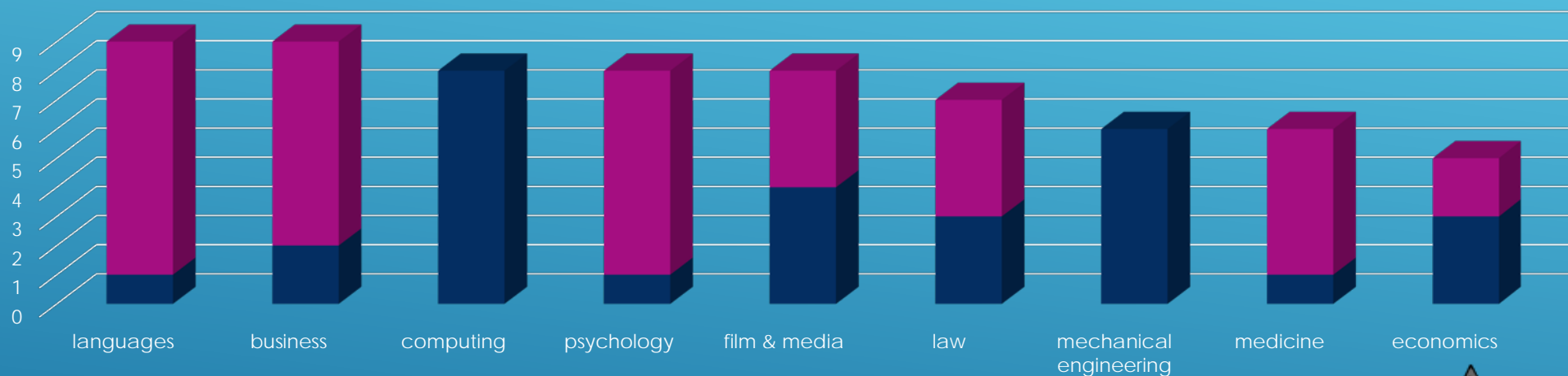
CAREERS

Boroughmuir High School



Total leavers	Higher Education	Further Education	Training	Employment	Voluntary Work	Unemployed Seeking	Unemployed Not seeking	Unconfirmed
187	125	26	3	19	5	5	3	1

UCAS Applications 2014-2015



SCHOOL LEAVER DESTINATIONS – 2014-2015



▶ Career Education is

- ▶ Developing career management skills
- ▶ Learning about the world of work
- ▶ An integral part of your child's learning

CURRICULUM FOR EXCELLENCE IN A NUTSHELL

The National Parent Forum of Scotland Introduction to Career Education

WHAT IS CAREER EDUCATION?



- ▶ PSE – Planning for Choices and Changes
 - ▶ S1: Skills & Qualities
 - ▶ S2: Course Choice & Job Study
 - ▶ S3: Employability & The World of Work
 - ▶ S4: Career Management Skills & Work Experience
 - ▶ S5: Labour Market Information & Opportunities
 - ▶ S6: Horizons & Destinations & Personal Statements

- ▶ Personal Learning Planning

PERSONAL AND SOCIAL EDUCATION



- ▶ Lou Murphy – School Careers Coach
 - ▶ Work with classes
 - ▶ Individual appointments



SKILLS DEVELOPMENT SCOTLAND



The help you need for the career you want



My career options

Start by learning more about yourself, including where your strengths lie. You'll get suggestions to help you explore your options, from school subjects through to changes in your career.

[Explore options](#)

Learn and train

Search for courses, and get advice on UCAS and college applications. There's info on qualifications, volunteering, and funding – including SDS Individual Learning Accounts.

[Get started](#)

Getting a job

Find job or Modern Apprenticeship vacancies. Then use our tips and tools for CVs, application forms and interviews to help you get it.

[Read more](#)

- ▶ Curriculum for Excellence
 - ▶ Responsibility for All
- ▶ Career Noticeboards
- ▶ Careers Library
- ▶ My World of Work

- ▶ 16+ Meetings
- ▶ Vocational Qualifications
- ▶ Information Evenings
- ▶ Employer Engagement

WIDER CURRICULUM



- ▶ S4, S5
- ▶ Gateway Database
- ▶ Self-found

WORK EXPERIENCE



- ▶ Curriculum Areas
- ▶ Young Enterprise
- ▶ Career Ready
- ▶ JET
- ▶ Learning Through Work Week
- ▶ “Engage” Events



EMPLOYER ENGAGEMENT



- ▶ Employer Engagement
- ▶ Cluster Links
- ▶ Work Experience
- ▶ Interview Practice

NEXT STEPS

