



# S6 Post School Planning

- *Our Vision*
- *To ensure a confident, nurturing & inclusive learning community where all achieve their true potential & embrace life's challenges.*





# Content

- Expectations for S6
- Structure of S6
- Structure/assessment of courses
- School support
- Parental support
- Tracking and reporting
- Careers advice
- Post school application process
- UCAs/College/Apprenticeships





# Senior School Agreement

By coming back to school for S6 pupils are buying into the ethos of the school and are expected to:

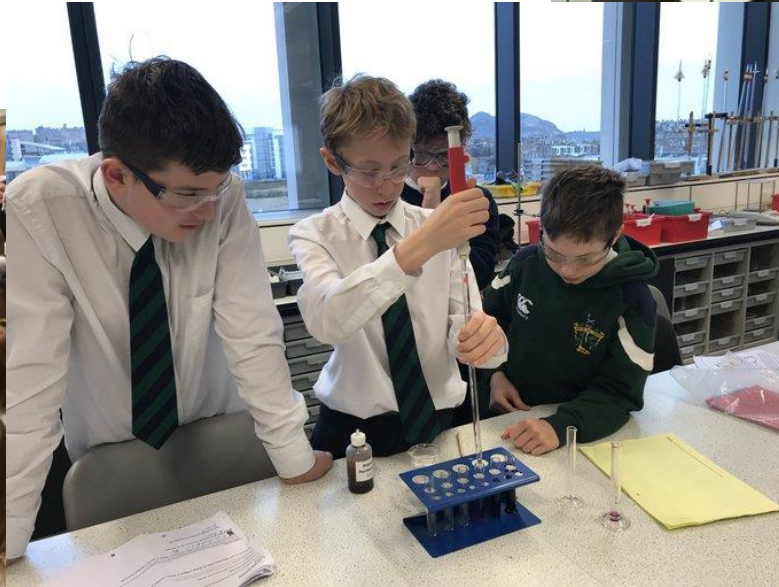
- Continue to have positive relationships
- Attend school and ensure punctuality
- Adhere to the school dress code
- Model our RESPECT code to younger pupils
- Meet deadlines



# Dress code in action!











# Why are deadlines important?

- They are there to help pupils manage their workload
- They are there to help teachers manage their workload
- They are needed so that teachers can “authenticate” pupil work and see work in progress and how it develops over time
- If teachers are unable to authenticate pupil work they cannot submit coursework to the SQA
- Please refer to the school senior assessment calendar when available for deadlines



# S6 Structure

- PSE – Monday Period 1 or 2
- No registration for any S6 on a Tuesday
- Study classes period 1 & 2 if no subject class – except Wednesday p1&2
- Study classes will not run on a Wednesday p1&2. Pupils who have a subject class periods 1&2 should attend registration. All other pupils should come into school for their first subject class on a Wednesday.
- Pupils can sign in and out of school after period 2
- College possible for some pupils Tuesday/Thursday afternoons
- Neighbourhood schools used to deliver some subjects
- Minimum of 3 subjects depending on level of course



# A Day in the Life of an S6 Student

	Period 1 8.45-9.40	Period 2 9.40-10.35	Period 3 10.55-11.50	Period 4 11.50-12.50	Period 5 1.35-2.30	Period 6 2.30-3.30
MONDAY REGISTRATION	<b>PSE</b>	<b>Study Class</b>	<b>AH English</b>	<b>H Music</b>		<b>NPA Photo</b>
TUESDAY		<b>H Music</b>		<b>AH English</b>	<b>In class support</b>	
WEDNESDAY REGISTRATION	<b>Study Class</b>	<b>NPA Photo</b>	<b>NPA Photo</b>	<b>Assembly</b>		<b>H Music</b>
THURSDAY REGISTRATION	<b>H Music</b>	<b>NPA Photo</b>	<b>AH English</b>			
FRIDAY REGISTRATION	<b>NPA Photo</b>	<b>AH English</b>	<b>H Music</b>			



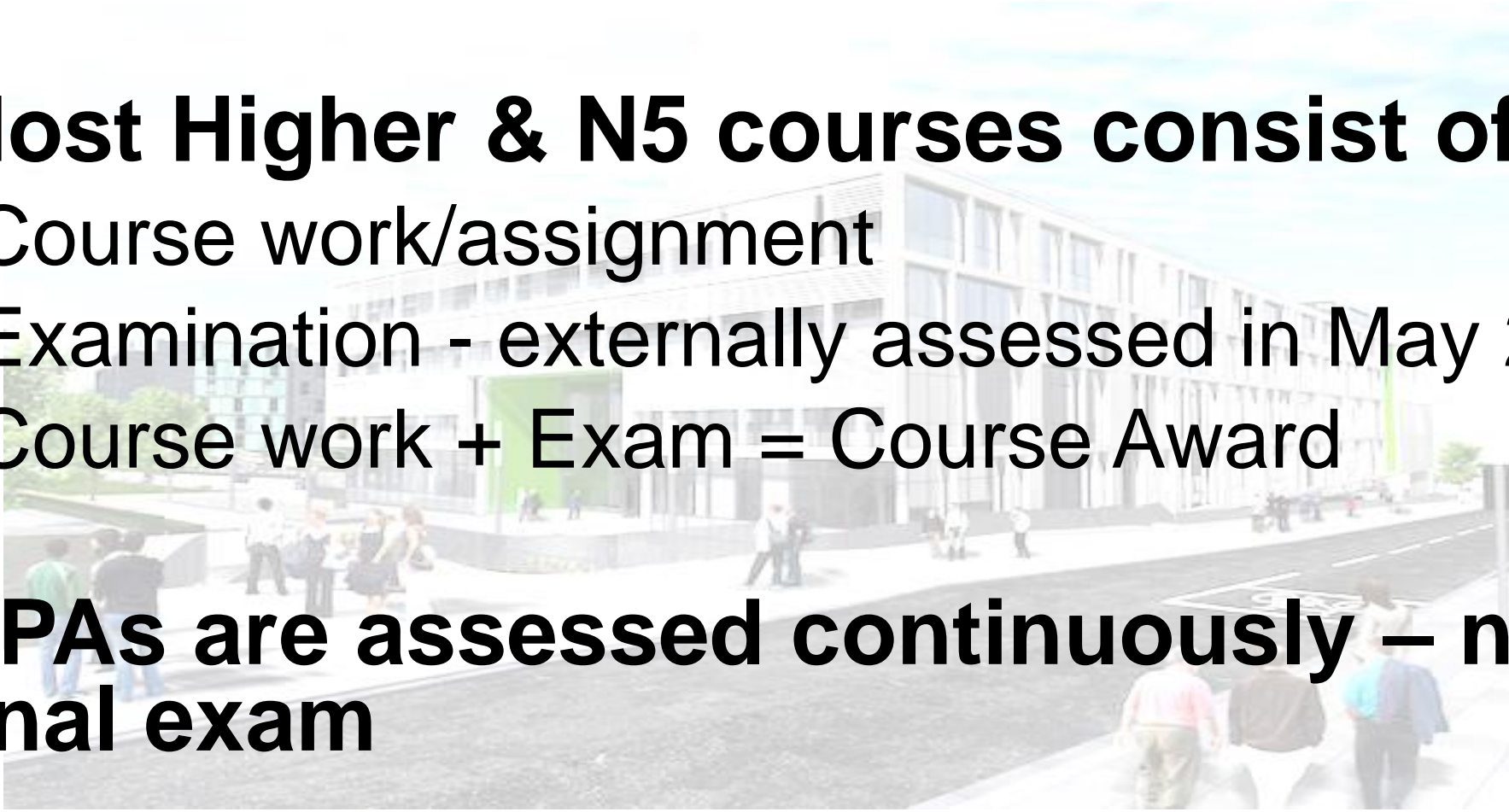


# Assessment of Courses

**Most Higher & N5 courses consist of:**

- Course work/assignment
- Examination - externally assessed in May 2022
- Course work + Exam = Course Award

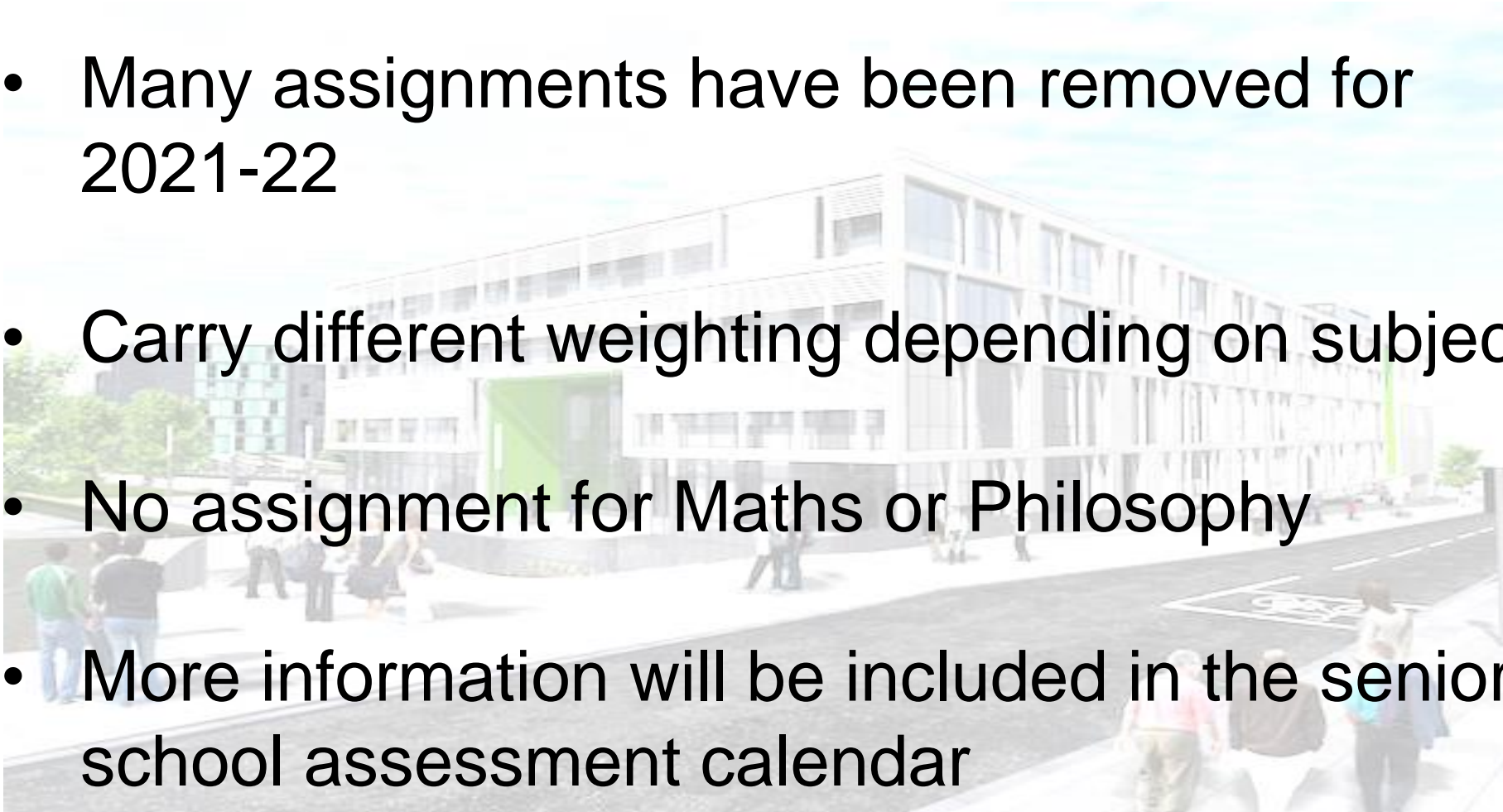
**NPAs are assessed continuously – no final exam**





# Assignments

- Many assignments have been removed for 2021-22
- Carry different weighting depending on subject
- No assignment for Maths or Philosophy
- More information will be included in the senior school assessment calendar







# Support for Pupils

## FIVE HOUSES:

- Hartington: Ms F Grant
- Leamington: MS C Nisbet
- Montpelier: Mr P McIlwaine
- Viewforth: Mr C Brandie
- Westhall: Mrs L Wallace





# School Support

- Post school planning and application advice and support in PSE
- **“Teams”** on Office 365 – course notes/assignments
- Subject Timelines issued – deadlines
- Senior school assessment calendar
- After school/lunchtime sessions – when able to run
- **“Scholar”** password for access to materials on **Scholar**



# Homework and Home Study

## SCHOLAR



Heriot Watt University SCHOLAR courses have been running for over 20 years and offer 37 high quality online courses for Scottish schools aligned to the SQA curriculum at National 5, Higher and Advanced Higher level. Each pupil is provided with their own username (their SCN number) and a password.

### Available Courses

Science and Mathematics			
	N5	H	AH
Applications of Mathematics	✓	✓	
Biology	✓	✓	✓
Chemistry	✓	✓	✓
Computing Science	✓	✓	✓
Human Biology	**	✓	**
Mathematics	✓	✓	✓
Physics	✓	✓	✓

Languages			
	N5	H	AH
English	✓	✓	✓
ESOL	✓	✓	**
French	*	✓	✓
Gaelic	*	✓	
German	*	✓	✓
Mandarin	✓		
Spanish	*	✓	✓

Business			
	N5	H	AH
Accounting		✓	✓
Art and Design		✓	
Business Management		✓	✓
Economics		✓	✓
Psychology		✓	**

\* Please note: these National 5 courses are support materials only.

\*\* Please note: SQA do not provide a qualification for this subject at this level.

# Homework and Home Study



Bitesize

Home

Daily lessons

Learn

Support

Careers



[Application of Maths](#)



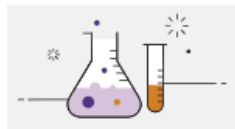
[Art and Design](#)



[Biology](#)



[Business management](#)



[Chemistry](#)



[Computing Science](#)



[Dance](#)



[Design and manufacture](#)



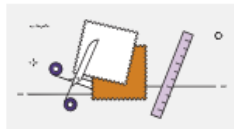
[Drama](#)



[Engineering science](#)



[English](#)



[Fashion and textile technology](#)



[French](#)



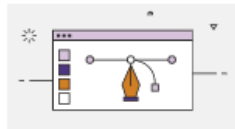
[Gaelic \(Learners\)](#)



[Geography](#)



[German](#)



[Graphic communication](#)



[Health and food technology](#)



[History](#)



[Hospitality](#)



[Maths](#)



[Modern Languages](#)



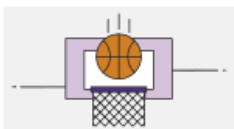
[Modern Studies](#)



[Music](#)



[Music Technology](#)



[Physical Education](#)



[Physics](#)



[Religious, moral and philosophical studies](#)



[Spanish](#)



[Technologies](#)

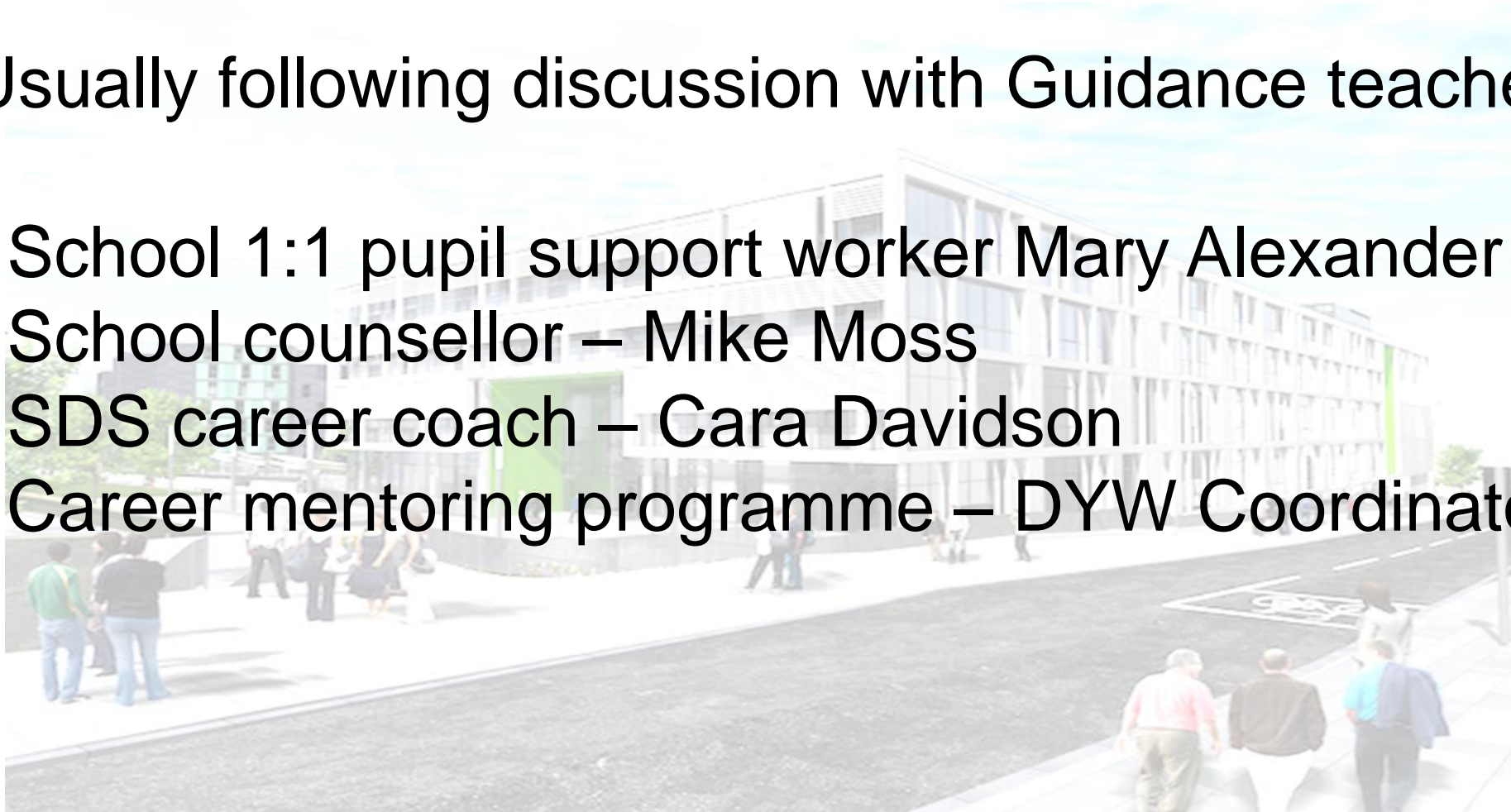




# Additional School Support

Usually following discussion with Guidance teacher:

- School 1:1 pupil support worker Mary Alexander
- School counsellor – Mike Moss
- SDS career coach – Cara Davidson
- Career mentoring programme – DYW Coordinator





# Tracking Pupil Progress

- Tracking reports in Sept/March
- For the September tracking an indication of progress will be issued rather than working and target grades
- Subsequent reports will have a target grade and working grade:
  - **Aspirational target grade = TG**
  - **Working grade = WG – this grade gives parents the best indication of what level a pupil is working at but is not an estimate grade, it reflects work completed at the time of writing**
- Guidance teacher / subject teachers will discuss discrepancies with pupils regularly
- Full report mid/late November
- These will be delivered via pupil post/text message



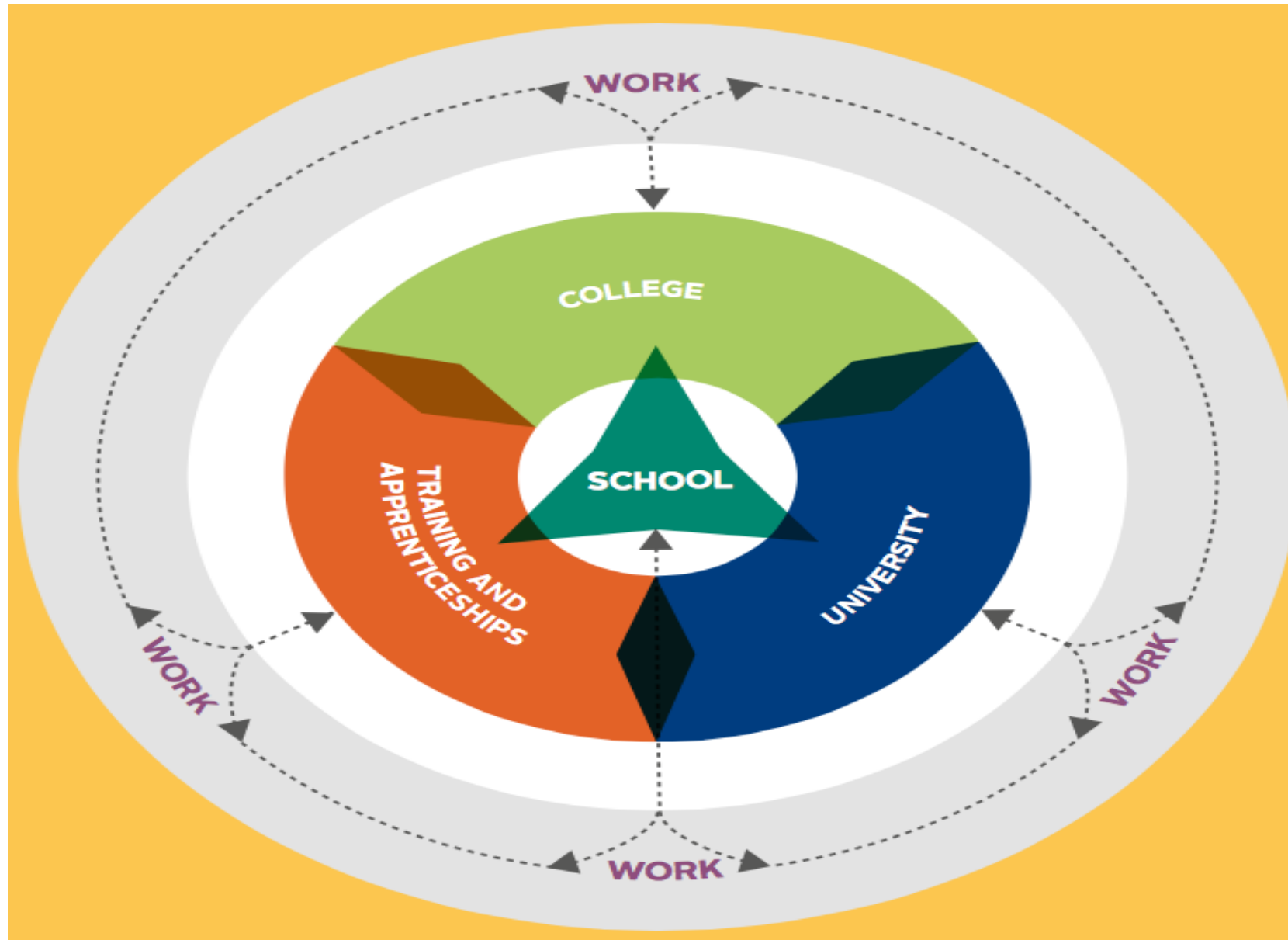
# Important dates

- Sept Tracking Report - issued the first week of October
- Full Progress Report – by pupil post mid November 2021
- S6 Parents' Evenings:
  - Thursday 10 February 6R1, 6R2, 6R3 & 6R4
  - Tuesday 22 February 6R5, 6R6, 6R7
- Prelims - 14-27 January 2022
- Proposed SQA Exam diet 26 April-1 June 2022 (we will update you if this changes)



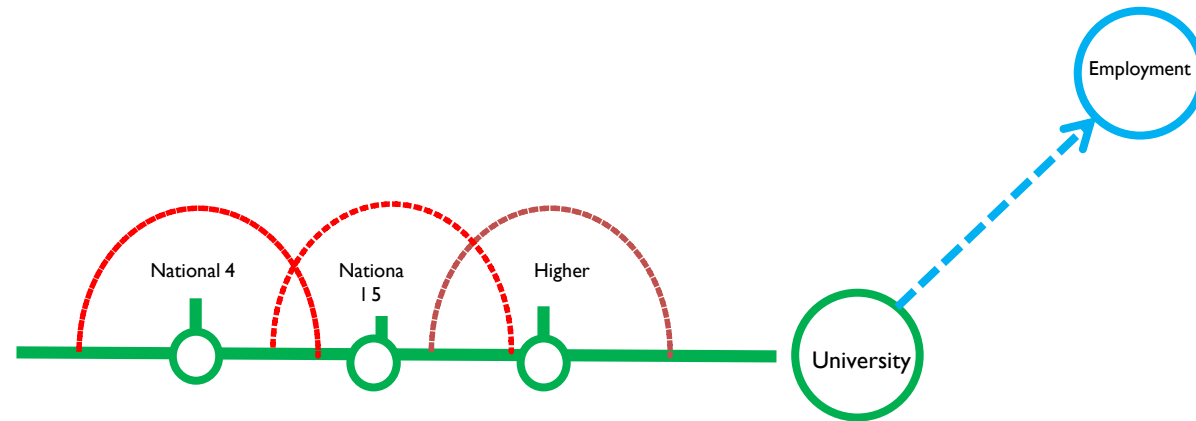


# Positive & Sustainable Destinations



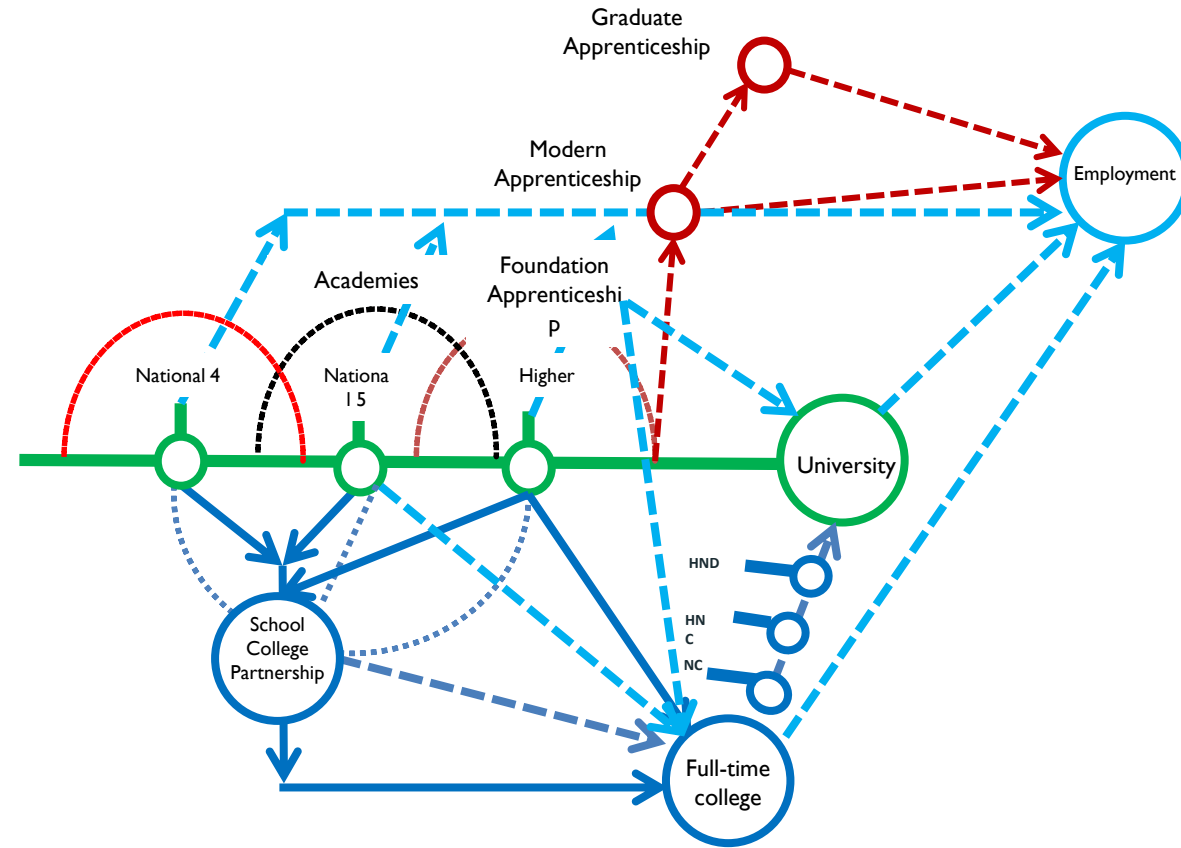


# Traditional Route to University





# Senior Phase Pathways







## Careers Adviser Contact Details

Cara Davidson

Email: [Cara.Davidson@sds.co.uk](mailto:Cara.Davidson@sds.co.uk)

Call: 0131 376 2243 (please leave a message)

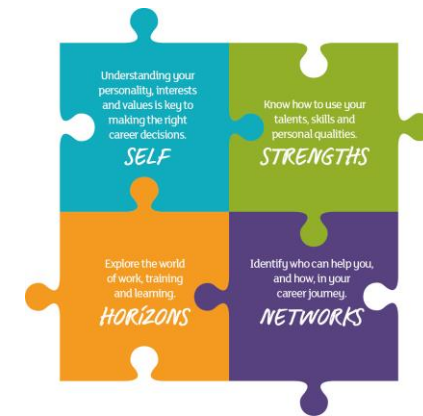
Text: 07787276231

Available Monday – Friday (careers office at back of library)

Standard working hours 9am to 5pm

(available at other times via negotiation)

Careers Advice and Guidance will be offered over the telephone or via email



# SDS support continues after school – for you and your young person

- Available for all, service is free
- Local careers centre is at 79 Shandwick Place in the West End

You can also find SDS on Facebook  
[Facebook.com/SDSEdinburgh](https://www.facebook.com/SDSEdinburgh)



# Useful Parent/Carer Resources

## Research/Support

- My Kids Career  
[www.mykidscareer.com/](http://www.mykidscareer.com/)
- My World of Work  
[www.myworldofwork.co.uk/parents](http://www.myworldofwork.co.uk/parents)
- DYW – E resources  
[www.dyw.scot/edyw.html](http://www.dyw.scot/edyw.html)
- Digital World  
[www.digitalworld.net/](http://www.digitalworld.net/)
- Articulation Routes  
[www.pathways.ac.uk](http://www.pathways.ac.uk)

## Opportunities

- Apprenticeship.Scot  
[www.apprenticeships.scot/](http://www.apprenticeships.scot/)
- The Guarantee  
[www.theguarantee.org/](http://www.theguarantee.org/)
- SDS Edinburgh Facebook  
[www.facebook.com/SDSEdinburgh/](https://www.facebook.com/SDSEdinburgh/)





# Applying for Post School destination

- ▶ Supported by Guidance teacher, whether applying to University, Graduate Apprenticeship, College, Modern Apprenticeship or Employment
- ▶ Applying through UCAS Hub:

[Applying to University - learn about everything involved \(ucas.com\)](https://ucas.com)

Up to 5 university choices can be made

Choose at least one secure choice (somewhere that their grades already meet the typical entry requirements), and up to four others.

# LEAPS eligibility

If you think your young person might be LEAPS eligible follow the links below for further information -

**LEAPS website:** [www.leapsonline.org](http://www.leapsonline.org)

**Eligibility criteria:**

<https://www.leapsonline.org/about/our-eligibility-criteria>

**Presentation we have shown S6 in PSE:**

<http://www.leapsonline.org/schoolstudents/s6-blog/what-leaps>

If they have not given their name to their Guidance teacher please ask them to do so or get in touch.

# College Application

- ▶ Open Jan/Feb
- ▶ All S6 will apply as a first choice or a back up plan (unless they have an unconditional offer for University)
- ▶ College workshops during PSE time to support application process



# Modern Apprenticeship / Employment

- ▶ These become available all year round
- ▶ Some apprenticeships may have a January closing date and not start until September
- ▶ Access information through signing up to Edinburgh Guarantee and Apprenticeship.scot for alerts, PSE, school website / twitter

# Personal Statement

- ▶ All S6 will write a PS and adapt it for their chosen destination
- ▶ 4000 characters for UCAS & College
- ▶ Save as a word document and transfer onto application
- ▶ Draft PS due 13/09/2021 for early applicants /all others 29/10/2021
- ▶ Final PS on Apply for early applicants by 21/09/2021 / all other applicants by 01/11/2021
- ▶ Support with Personal Statements in school through PSE / Career's Adviser / UCAS personal statement tool.

# Useful UCAS links

- ▶ Choosing courses - [Search University Courses & Find the degree for you \(ucas.com\)](https://www.ucas.com)
- ▶ Advice for Parent/carer - [Advice For Parents And Guardians | UCAS | Parent Guide To University](#)
- ▶ Personal Statements - [UCAS Personal Statement Tool - Learn what to write about](#)
- ▶ [The Parents' Guide to UCAS personal statements - 2022 edition \(theparentsguideto.co.uk\)](#)
- ▶ Tracking Applications - [UCAS Track - How to Track Your Application](#)
- ▶ Accepting Offers - [Deadlines for Accepting University Offers | UCAS](#)