



# S5 Parents' Information Evening

## *Our Vision*

*To ensure a confident, nurturing & inclusive learning community where ALL achieve their true potential & embrace life's challenges.*



# Content

- Expectations for S5
- Structure of S5
- Structure/assessment of courses
- School support
- Parental support
- Tracking and reporting
- Careers advice





# Senior School Agreement

By coming back to school for S5 pupils are buying into the ethos of the school and are expected to:

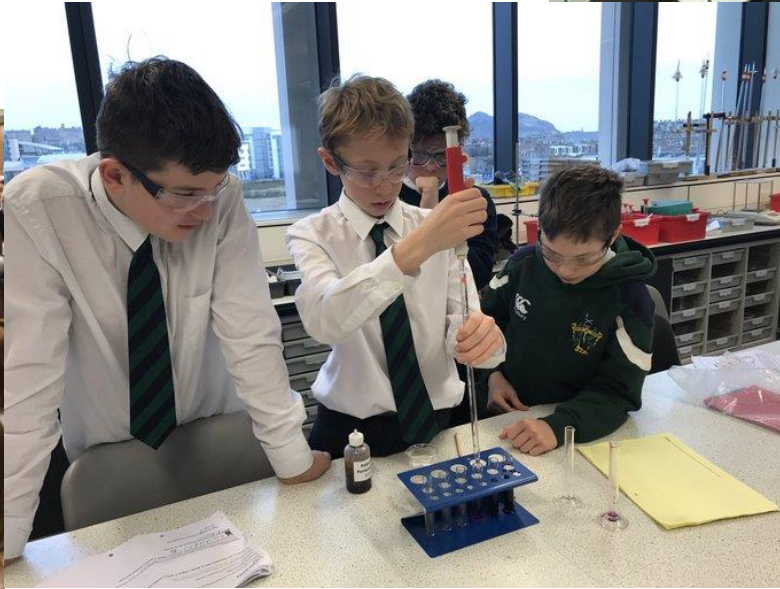
- Continue to have positive relationships
- Attend school and ensure punctuality
- Adhere to the school dress code
- Model our RESPECT code to younger pupils
- Meet deadlines



# Dress code in action!











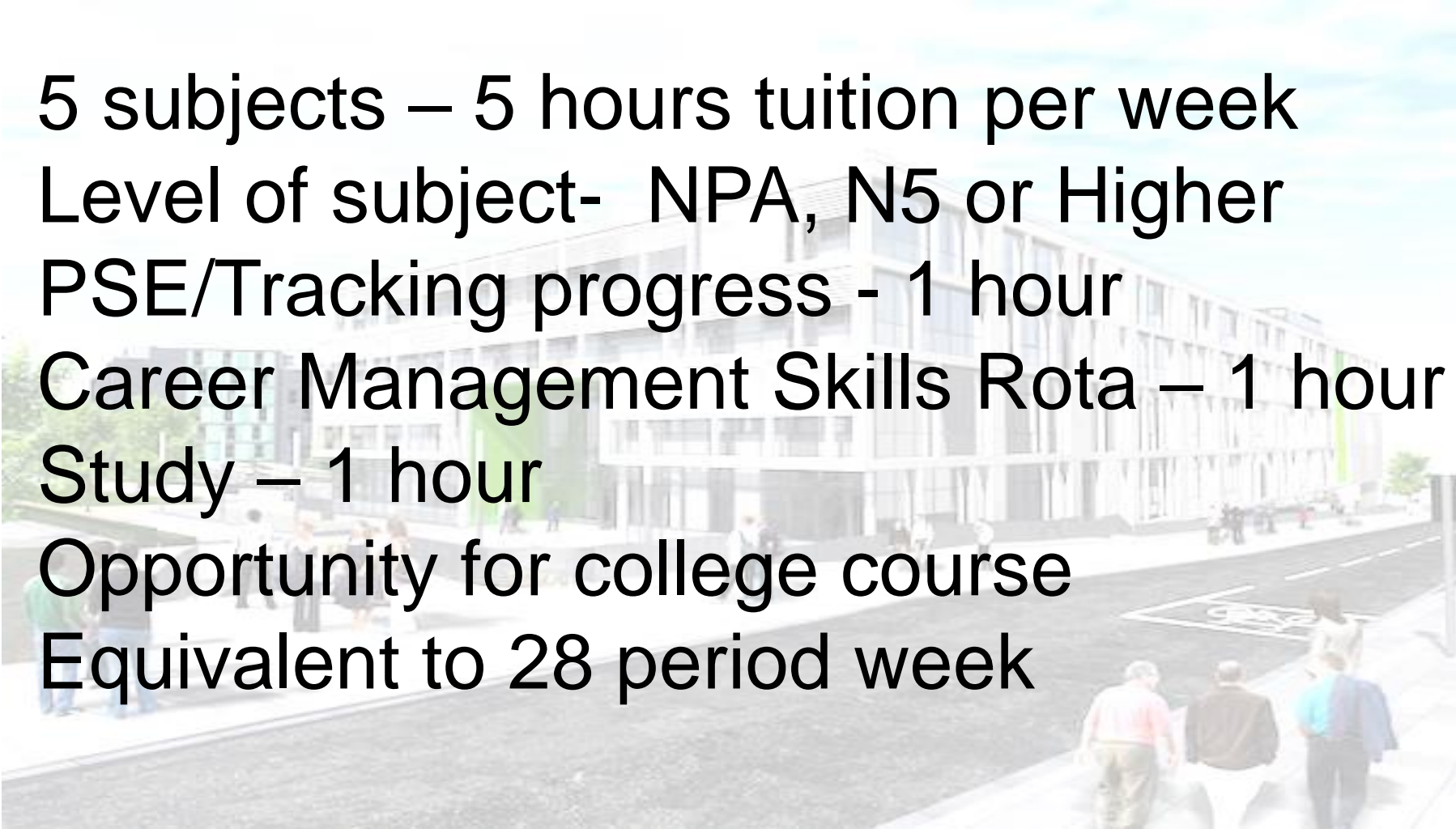
# Why are deadlines important?

- They are there to help pupils manage their workload
- They are there to help teachers manage their workload
- They are needed so that teachers can “authenticate” pupil work
- If teachers are unable to authenticate pupil work they cannot submit coursework to the SQA
- Please refer to the school senior assessment calendar for deadlines



# S5 Structure

- 5 subjects – 5 hours tuition per week
- Level of subject- NPA, N5 or Higher
- PSE/Tracking progress - 1 hour
- Career Management Skills Rota – 1 hour
- Study – 1 hour
- Opportunity for college course
- Equivalent to 28 period week





# A Day in the Life of an S5 Student

	Period 1 8.45-9.40	Period 2 9.40-10.35	Period 3 10.55-11.50	Period 4 11.50-12.50	Period 5 1.35-2.30	Period 6 2.30-3.30
MONDAY Reg 8:32-8:45	Study	Spanish	History	English	CMS Rota	Maths
TUESDAY Reg 8:32-8:45	PSE	History	Spanish	Maths	Schools College Partnership	Schools College Partnership
WEDNESDAY Reg 8:32-8:45	Maths	English	English	Study	Spanish	History
THURSDAY Reg 8:32-8:45	Spanish	Maths	English	History	Schools College Partnership	Schools College Partnership
FRIDAY Reg 8:32-8:45	Maths	Spanish	History	English		



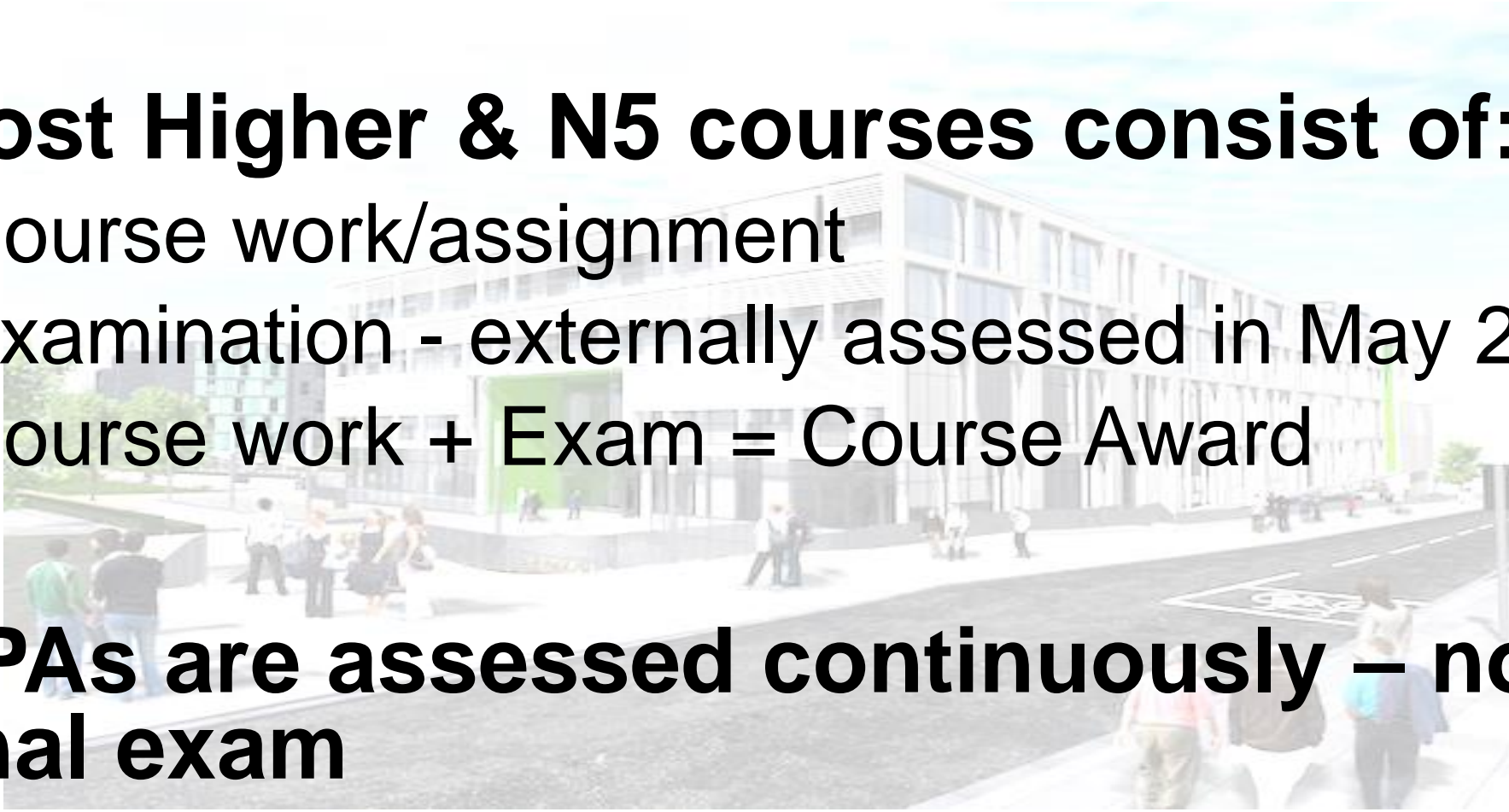


# Assessment of Courses

**Most Higher & N5 courses consist of:**

- Course work/assignment
- Examination - externally assessed in May 2021
- Course work + Exam = Course Award

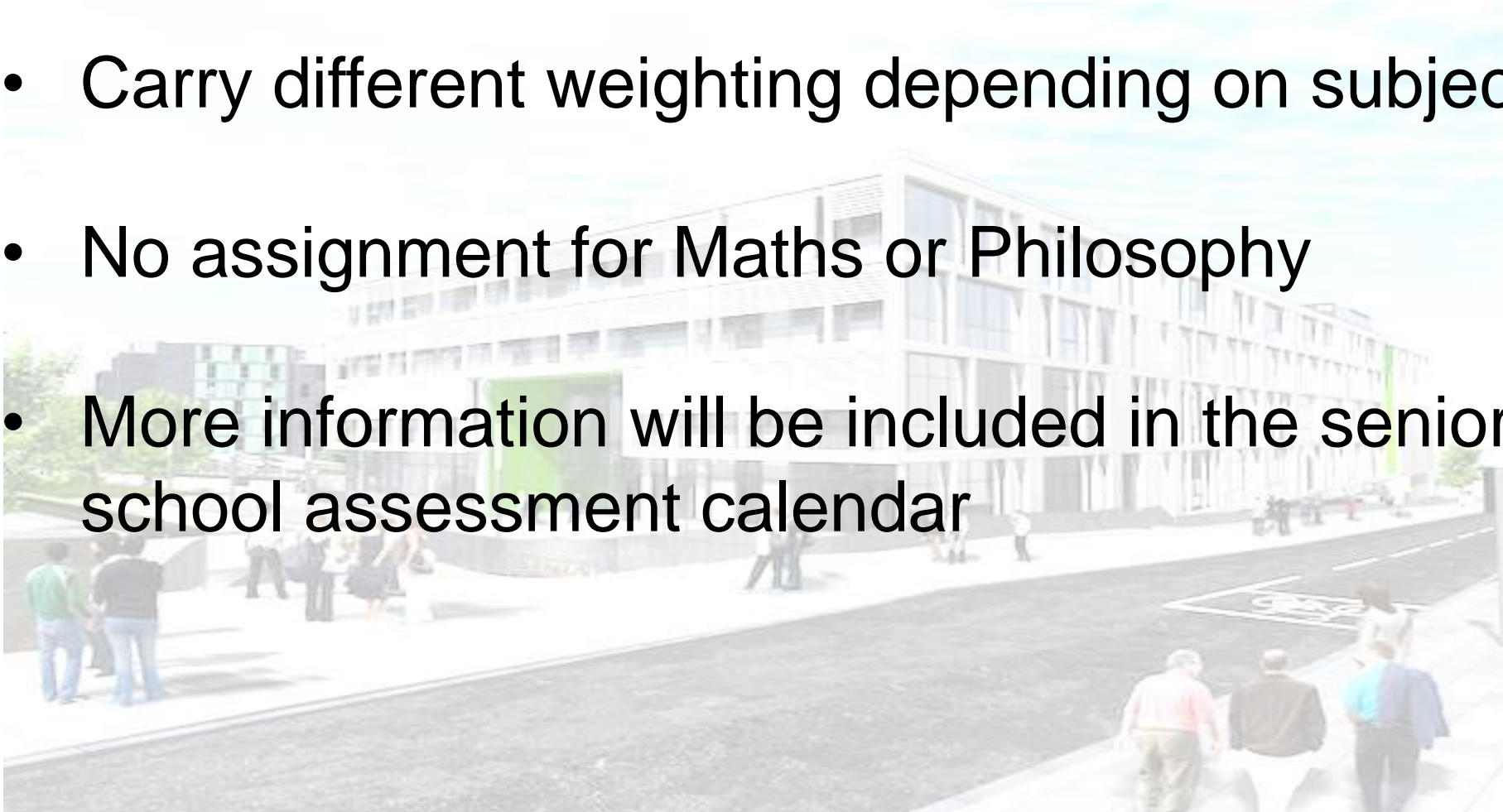
**NPA's are assessed continuously – no final exam**





# Assignments

- Carry different weighting depending on subject
- No assignment for Maths or Philosophy
- More information will be included in the senior school assessment calendar







# Example of assessment in Higher English

- Exam (70% of grade):
  - Paper 1 RUAE (30 marks)
  - Paper 2 Critical Reading - 1 Scottish textual analysis (20 marks) + critical essay (20 marks)
- Folio of Writing (30% of grade):
  - editing Discursive / persuasive piece
  - drafting first personal-reflective, or creative, piece
- Spoken Language – continued assessment of four elements of Spoken Language Course Award, through solo and group talk.  
Must be passed by end of March to gain a course award



# Support for Pupils

## FIVE HOUSES:

Each House has 2 Register classes e.g 5H1 and 5H2

- Hartington: Ms F Grant (PSL)
- Leamington: Ms C Nisbet (PSL)
- Montpelier: Mr P McIlwaine (PSL)
- Viewforth: Mr C Brandie (PSL)
- Westhall: Mrs L Wallace (PSL)



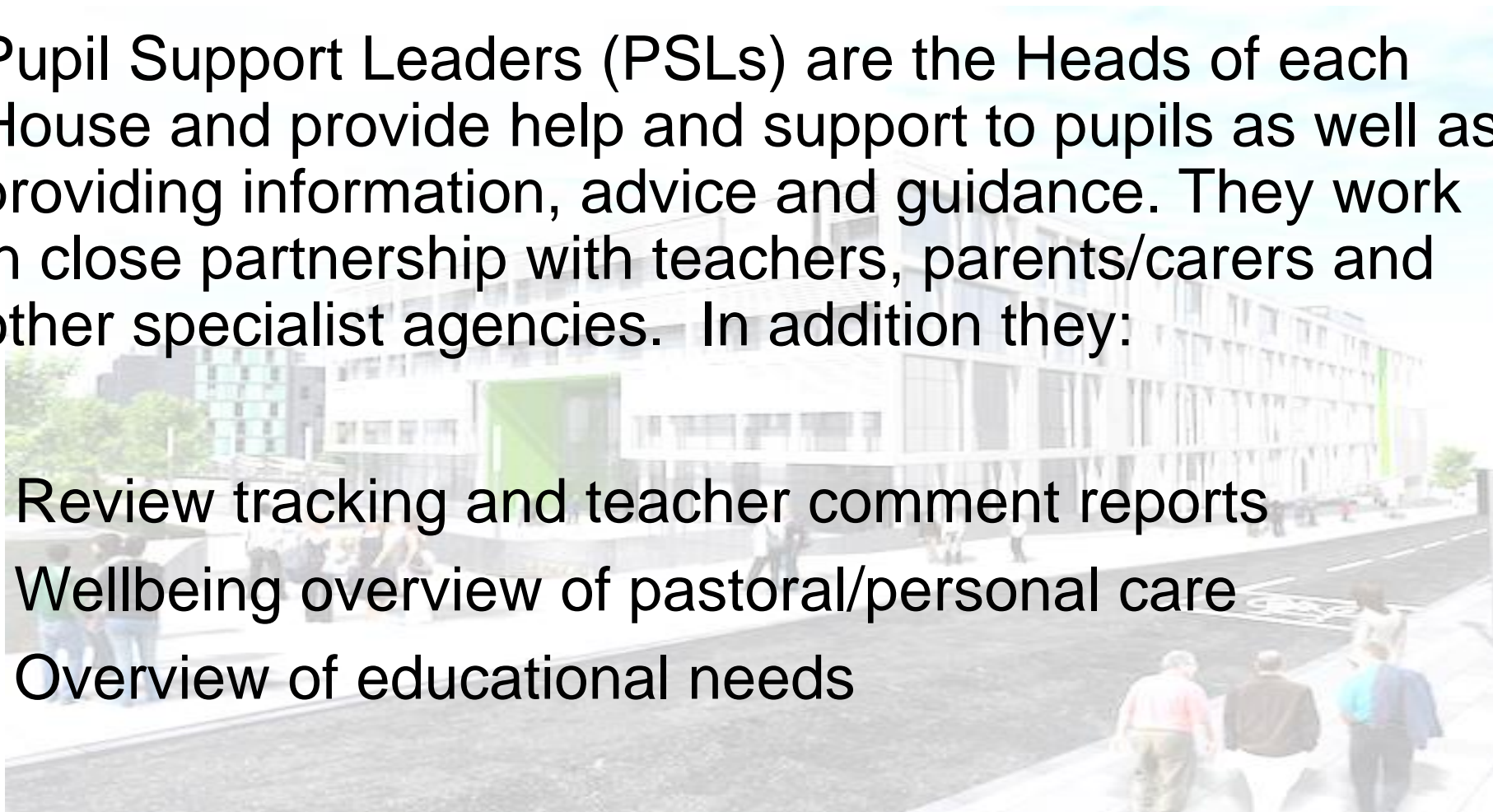




# Support for Pupils

Pupil Support Leaders (PSLs) are the Heads of each House and provide help and support to pupils as well as providing information, advice and guidance. They work in close partnership with teachers, parents/carers and other specialist agencies. In addition they:

- Review tracking and teacher comment reports
- Wellbeing overview of pastoral/personal care
- Overview of educational needs





# Support for Learning

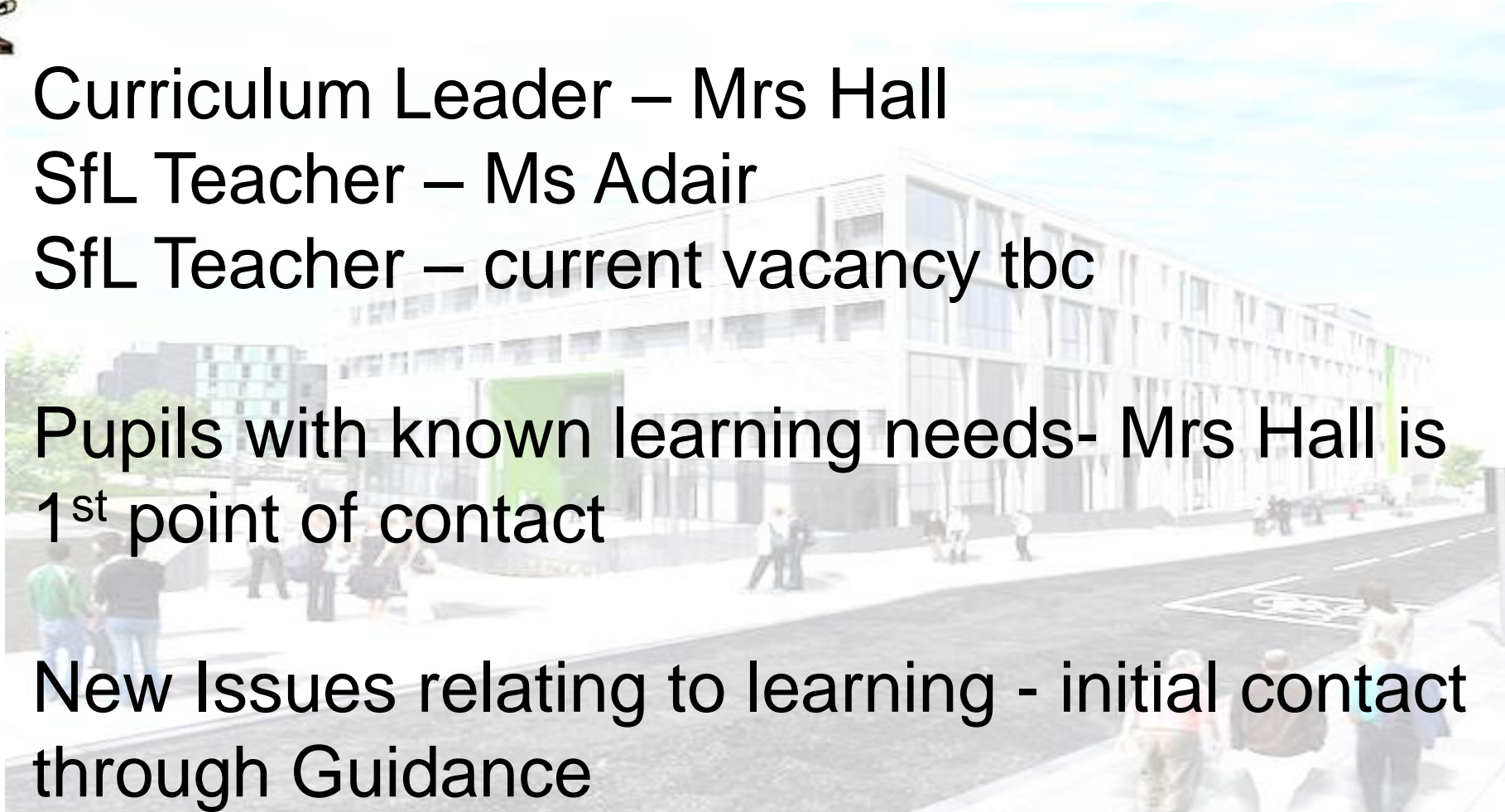
Curriculum Leader – Mrs Hall

SfL Teacher – Ms Adair

SfL Teacher – current vacancy tbc

Pupils with known learning needs- Mrs Hall is  
1<sup>st</sup> point of contact

New Issues relating to learning - initial contact  
through Guidance







# Additional School Support

- Study Techniques in PSE/Career Management Skills Rota
- Course outline in CC booklet- website
- **“Teams”** on Office 365 – course notes/assignments
- Subject Timelines issued – deadlines
- Senior school assessment calendar
- After school/lunchtime sessions – when able to run
- **“Scholar”** password for access to materials
- Tracking and monitoring reports

Heriot Watt University SCHOLAR courses have been running for over 20 years and offer 37 high quality online courses for Scottish schools aligned to the SQA curriculum at National 5, Higher and Advanced Higher level.

Each pupil is provided with their own username (their SCN number) and a password.

Science and Mathematics			
	N5	H	AH
Biology	✓	✓	✓
Chemistry	✓	✓	✓
Computing Science	✓	✓	✓
Human Biology	**	✓	**
Mathematics	✓	✓	✓
Physics	✓	✓	✓

Languages			
	N5	H	AH
English	✓	✓	✓
ESOL	✓	✓	**
French	*	✓	✓
Gaelic	*	✓	
German	*	✓	✓
Mandarin	✓		
Spanish	*	✓	✓

Business			
	N5	H	AH
Accounting		✓	✓
Art and Design		✓	
Business Management		✓	✓
Economics		✓	✓
Psychology		✓	**

\* Please note: these National 5 courses are support materials only.

\*\* Please note: SQA do not provide a qualification for this subject at this level.

# Homework and Home Study



Bitesize

Home

Daily lessons

Learn

Support

Careers



[Application of Maths](#)



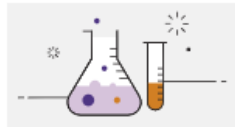
[Art and Design](#)



[Biology](#)



[Business management](#)



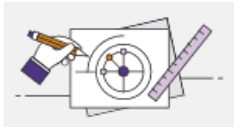
[Chemistry](#)



[Computing Science](#)



[Dance](#)



[Design and manufacture](#)



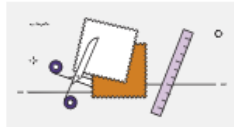
[Drama](#)



[Engineering science](#)



[English](#)



[Fashion and textile technology](#)



[French](#)



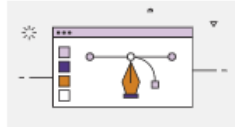
[Gaelic \(Learners\)](#)



[Geography](#)



[German](#)



[Graphic communication](#)



[Health and food technology](#)



[History](#)



[Hospitality](#)



[Maths](#)



[Modern Languages](#)



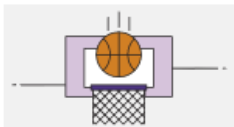
[Modern Studies](#)



[Music](#)



[Music Technology](#)



[Physical Education](#)



[Physics](#)



[Religious, moral and philosophical studies](#)



[Spanish](#)



[Technologies](#)





# How can parents help support S5 pupils?

- Discuss expectations of senior school with pupils
- Help with organisation of school work/folders jotters
- Provide a place to work- bedroom/ public room
- Be familiar with course structure:- [www.sqa.org.uk](http://www.sqa.org.uk)
- [www.boroughmuirhighschool.org/the-curriculum/](http://www.boroughmuirhighschool.org/the-curriculum/)
- <https://www.npfs.org.uk/downloads/category/in-a-nutshell-series/highers-in-a-nutshell/>
- Past papers/Success guides
- <https://education.gov.scot/parentzone/learning-at-home/Supporting%20study>



# Tracking Pupil Progress

- Tracking reports in Sept/March
- Aspirational target grade = TG
- Working grade = WG – this grade gives parents the best indication of what level a pupil is working at but is not an estimate grade, it reflects work completed at the time of writing
- Guidance teacher / subject teachers will discuss discrepancies with pupils regularly
- Full report mid/late November
- These will be delivered via pupil post/text message



## Careers Adviser Contact Details

Lou Murphy

Email: [lou.murphy@sds.co.uk](mailto:lou.murphy@sds.co.uk)

Call: 0131 376 2280 (please leave a message)

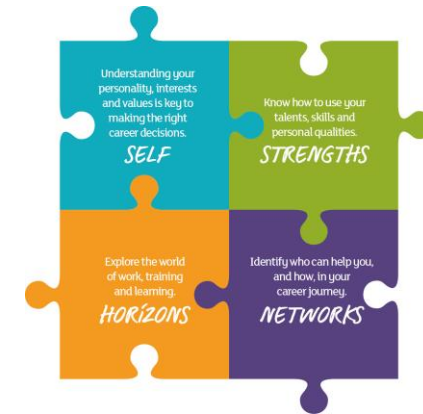
Text: 07887 830869

Available Monday – Friday

Standard working hours 9am to 5pm

(available at other times via negotiation)

Careers Advice and Guidance will be offered over the telephone or via email





# Useful Parent/Carer Resources

## Research/Support

- My Kids Career  
[www.mykidscareer.com/](http://www.mykidscareer.com/)
- My World of Work  
[www.myworldofwork.co.uk/parents](http://www.myworldofwork.co.uk/parents)
- DYW – E resources  
[www.dyw.scot/edyw.html](http://www.dyw.scot/edyw.html)
- Digital World  
[www.digitalworld.net/](http://www.digitalworld.net/)
- Articulation Routes  
[www.pathways.ac.uk](http://www.pathways.ac.uk)

## Opportunities

- Apprenticeship.Scot  
[www.apprenticeships.scot/](http://www.apprenticeships.scot/)
- The Guarantee  
[www.theguarantee.org/](http://www.theguarantee.org/)
- SDS Edinburgh Facebook  
[www.facebook.com/SDSEdinburgh/](https://www.facebook.com/SDSEdinburgh/)





# Important dates

- Sept Tracking Report - issued the first week of October
- Full Progress Report – by pupil post mid November 2020
- S5 Parents' Evenings:
  - Thursday 18 February **5H1, 5L1, 5M1, 5V1 & 5W1**
  - Tuesday 23 February **5H2, 5L2, 5M2, 5V2 & 5W2**
- Prelims - **8-21 January 2021**

