



## BOROUGHMUIR HIGH SCHOOL

---

# Safe Return to School – Information

**18<sup>th</sup> September 2020**

### **Monday Holiday:**

School is closed on Monday 21<sup>st</sup> September and resumes for all pupils Tuesday 22<sup>nd</sup> September at 8.32am.

I want to thank all our pupils, parents and staff for their contribution to making our first 6 weeks back at school so successful.

Have a great weekend!!

### **Stair Changes**

As of Tuesday, 22<sup>nd</sup> September we are making changes to the stairs that are used to go up and down between floors

### **We have changed the direction of each stair.**

**We think this will alleviate overcrowding in certain parts of the building.**

**STAIR 4** (The South West Stair) will now be a **down stair**.

**STAIR 3** (The South East Stair) will now be an **up stair**.

**STAIR 1** (The North West Stair) will now be an **up stair**.

**STAIR 2** (The North East Stair) will now be a **down stair**.

Also, pupils are permitted to use:

- ALL STAIRS at the end of the day as down stairs to Ground floor level
- Both sides of the Reception Staircase to go down to the front door
- Both front doors to exit the building.

### **Face coverings**

Please can all pupils be in possession of their own face covering and wear it when moving between classes and during social times, if inside, when finished eating and drinking.

### **Child Feels Unwell with Symptoms of COVID -19**

Appended is an **updated** flow chart as provided by NHS- Lothian on the procedures to be followed in the event of a child presenting with symptoms of COVID -19

**Please note the advice on symptoms other than those of COVID-19 symptoms and also on informing the school of COVID -19 test results.**

## Child feels unwell with symptoms of COVID-19

Child feels **unwell** with symptoms of COVID-19

- New continuous cough and/or
- Fever/high temperature and/or
- Loss of, or change in, sense of smell or taste.

Child unwell with **other types of symptoms** e.g. blocked/runny nose, sore throat, sneezing. Then:

- Follow standard school illness policy.
- If child is too unwell to be at school, then they should stay at home.
- **No need for COVID testing** unless develops one or more symptoms of COVID-19
- Ensure good hand & respiratory hygiene

Child is removed from contact with others and isolated somewhere safe and at least 2 meters away from other people. Staff looking after the child should wear gloves, apron and a fluid resistant surgical mask.

Immediate area (e.g. desk) occupied by child is **cleaned** with detergent and disinfectant using appropriate PPE

Double bag any cleaning waste and PPE and store securely for 72 hours before disposal.

Parents/carers contacted and asked to collect child as soon as possible.  
Siblings/other members of the household should also be collected and taken home, as all members of the household should now stay at home and isolate.  
Parents/carers arrange a test for the symptomatic child online at [www.nhsinform.scot](http://www.nhsinform.scot) or call 0800 028 2816.  
Child and household should remain isolating at home while waiting for the test result.  
**Parent/carer should notify the school of the result when they receive it**

**Positive**

Child must **isolate** for 10 days.  
Household must isolate for 14 days  
School should inform the HPT as soon as possible.  
School arranges deep cleaning of affected areas.

**Negative**

Child can return to school provided they are well enough and have not had a fever for 48 hours.  
If the child is not well enough to return to school then the normal procedure for illness should be followed.

**The Test and Protect contact tracing team** will be in touch to identify any potential close contacts.

The HPT will be informed of the result and will contact the school to follow up school contacts and to provide further advice.

# 11<sup>th</sup> September 2020

## Face Coverings

Everyone in school must now wear a face covering at social times and when moving between classes. This is mandatory.

Pupils should have their own face covering or mask. The office does have a small supply of face masks for anyone needing one.

We do understand that for a variety of reasons not everyone is able to wear a face covering.

If you have a genuine reason for not being able to wear one please let us know and we will respect this. We can provide a card that you can show to teachers indicating that you are exempt.

Pupils should see their guidance teacher or Depute Head about this.

**Pre-order your Lunch:** All young people can pre-order food, including hot dishes, before 10.30 am at either the coffee shop or servery for that day or the rest of week. The dining staff will be able to set aside any orders which have been pre-ordered ready for collection that lunchtime.

## Parent Council.

The dates for the 2020/21 parent council meetings are outlined below. Meetings will be on-line. Please save the following dates to your diary. at 6.30pm:

16 September 2020 – AGM

4 November 2020

20 January 2021

17 March 2021

21 April 2021

19 May 2021

Details of how to access meetings will follow.

## **S3, S4 and S5/6 SLT Parents Information Evenings.**

Unfortunately, the annual S3, S4 and S5/6 Parents Information sessions have been cancelled. The information provided by the Depute Head Teachers has been provided in a copy of the slides. They are now online within the **Pupil Support > Parents Information** section of the website. They can also be found within the School App. The link to the website is

<https://boroughmuirhighschool.org/pupil-support/parents-information/>

If you have any questions regarding these slides please send this to

[coursechoice@boroughmuir.edin.sch.uk](mailto:coursechoice@boroughmuir.edin.sch.uk)

## **Support**

The following links are on our school website under “pupil support”- “parent information” for anyone who believes they may be eligible for financial assistance.

## **Educational maintenance allowance - EMA**

Here is the link for information and how to apply or check eligibility for Educational maintenance allowance [www.edinburgh.gov.uk/ema](http://www.edinburgh.gov.uk/ema)

### **Free School Meals and Clothing Grants**

Here is the link for information and how to apply or check eligibility for support with Free School Meals and Clothing Grants <https://www.edinburgh.gov.uk/schoolgrants>

## **4<sup>th</sup> September 2020**

### **Face Coverings**

As you will be aware everyone in school must wear a face covering at social times and when moving between classes.

You can of course remove it to eat and drink. One finished eating and drinking you must replace your face covering.

If you do not want to wear a face covering while in the building then you are free to go outside.

Please do respect this requirement at the appropriate times.

You should have your own face covering or mask. The office does have a small supply of face masks for anyone needing one.

We do understand that for a variety of reasons not everyone is able to wear a face covering. If you have a genuine reason for not being able to wear one please let us know and we will respect this.

We can provide a card that you can show to teachers indicating that you are exempt.

Pupils should see their guidance teacher or Depute Head about this.

**School Period Time:** S1- 3 and S4-6 have swapped and getting out for lunch is now only 5mins early!!

THIS TAKES EFFECT FROM MONDAY 7<sup>th</sup> SEP.

P1 as normal

**P2 finishes 10.30 for S1-3 and 10.35 for S4-6** (5 mins earlier on Fridays)

P3 as normal

**P4 finishes 12.45 for S4-6 and 12.50 for S1-3** (this includes Fridays)

P5 as norm

P6 S4 - S6 finish at 3.25 and S1 - S3 at 3.30 on the bell

### **Attendance and absence reminder**

It is our duty to track and know the whereabouts of all our pupils during the school day. As such if your child is unwell at home and is going to be absent, please let us know as soon as possible by either phoning 0131 229 9703, emailing the school [attendance@boroughmuir.edin.sch.uk](mailto:attendance@boroughmuir.edin.sch.uk) or using the 'Report Absence' button from the useful links on the school website. We would ask that you make contact with the school each day that your child is absent.

Where your child was expected to attend school and has not appeared in the morning and you have not informed us of any absence, you will be contacted by the school via text message as early as possible in the day to confirm their whereabouts. It is vital that we receive a response to this message immediately in order that we can update our records.

In the event that we do not receive a response a second text message will be sent. After this the school will attempt to make contact with the child's emergency contact to ascertain their wellbeing. We are obligated to continue trying to make contact until we receive a response.

It is also important if your child is going to be late for whatever reason you contact the school by either phoning 0131 229 9703, emailing the school [attendance@boroughmuir.edin.sch.uk](mailto:attendance@boroughmuir.edin.sch.uk) or using the 'Report Absence' button from the useful links on the school website.

Where possible appointments should be made out with school hours and the school made aware in advance, pupils should sign out and back in.

### **HPV Vaccinations**

HPV vaccinations have been cancelled for the time being. They will take place as soon as is practically possible.

## **28<sup>th</sup> August 2020**

A letter from the City was sent to all parents yesterday. A link to it is here.

[http://boroughmuirhighschool.org/wp-content/uploads/2020/08/Letter-to-Sec-school\\_270820\\_.pdf](http://boroughmuirhighschool.org/wp-content/uploads/2020/08/Letter-to-Sec-school_270820_.pdf)

### **Use of face coverings**

As you will be aware, as of Monday 31<sup>st</sup> August everyone in school has to wear a face covering at social times and when moving between classes. You can of course remove it to eat and drink.

Please do respect this requirement at the appropriate times.

Most people will want to wear their own face covering or mask but the office does have a small supply of face masks for anyone needing one.

We do understand that for a variety of reasons not everyone is able to wear a face covering and we understand and respect this.

### **A Child Shows Symptoms**

I attach a flowchart on the next page from NHS Lothian outlining the procedures that should be followed in the event that a pupil displays symptoms of COVID- 19.

### **Work for Isolating Children.**

In the event that a child does have to isolate, the school will deal with this absence in the same way that we deal with any other type of absence from school for medical reasons. The pupil's guidance teacher will liaise with the pupil's teachers to provide as much appropriate school work as possible.

### **Remedial Work**

Departments were asked to ensure that pupils were supported in catching up on work missed or not mastered during lockdown. There is obviously a wide variation of need in this area across all subjects and all year groups, but it is something staff are very aware of and something they are addressing in the most appropriate way.

### **Instrumental Music Instruction (IMS) Update**

Pupils should be checking school email and Teams where their music instructors will have contacted them to give guidance and support with their practise. We are hoping that some instructors will be returning to school in the coming weeks. We will keep you updated.

### **Sports Clubs, activities**

Indoor curricular PE is still not allowed. Neither are any sport related extracurricular activities either onsite or offsite.

As said last week, we are starting to introduce some non-sporting school-based activities at lunchtimes to provide a broader school experience to our pupils.

### **Visitors to School**

Visitors and partner agencies are currently not able to come into any school, unless it is absolutely essential.

This also applies to visits to the school by parents.

Overall, our pupils have responded brilliantly to all that we are asking of them in this current climate.

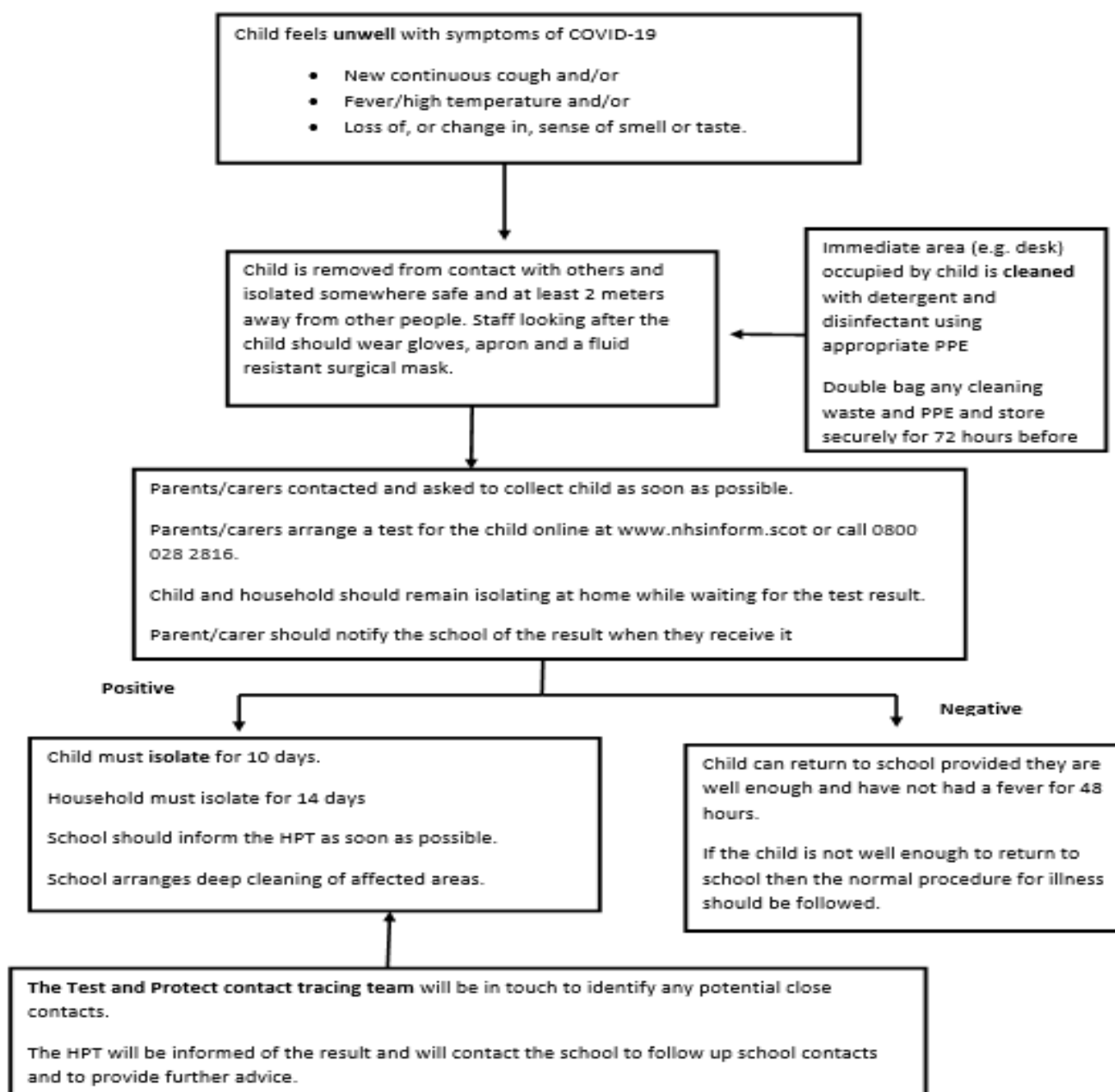
There is obviously a way to go yet, but I want to thank all our pupils, parents and staff for their incredible support in these first 3 weeks.

David C Dempster

Head Teacher

**See Below for 'Child feels unwell with Symptoms' - Flowchart**

## Section B: Child feels unwell with symptoms of COVID-19



## 21<sup>st</sup> August 2020

We've just finished our first full week of school and I'm pleased to say that overall, our pupils are enjoying being back at school and back learning in classrooms.

The wellbeing of all our pupils and staff is paramount. Schools are of course following Government guidance as well as City of Edinburgh guidance.

Please use the link below (which is also on the front page of our website) for further information.

[For the latest information on \*A Safe Return to School\* please click here.](#)

We will continue to monitor the mitigations we have in place and adjust and change them as per any new advice.

### **School Clubs**

We are aware that school is much more than timetabled classes and that many pupils are desperate to be involved in clubs and sports. We do have to observe advice on this, but we are trying to start some lunchtime clubs next week.

Some sports clubs will start w/b 31/8. Further details to follow.

**School Period Times:** Please note the altered times of school periods for the foreseeable future.

P1-as normal

P2-finishes 10.30 for S4-6 and 10.35 for S1-3 (5 mins earlier on Fridays)

P3-as normal

P4-finishes 12.40 for S1-S3 and 12.50 for S4-6 - this includes Fridays

P5-as normal

P6-S4-6 finish at 3.25 and S1-3 at 3.30 on the bell

### **Assembly Hall – Additional Social Space:**

In the current health and safety climate and with inclement weather, we are opening the Assembly Hall at break and lunch for pupils to use. This is available for all year groups.

### **Catering**

There is a full range of food options now in our Servery and all pupils are all able to use this facility. We are keen to have our pupils use the school canteen again.

Week beginning 31/8 any pupil purchasing lunch from the canteen will receive a free piece of home baking as a thank you.

### **Year group information evenings**



Our full Home School Communication Calendar is on our web-site. Click here

<http://boroughmuirhighschool.org/wp-content/uploads/2020/08/20.21-TABULAR-Home-School-Calendar1.docx>

Due to the current restrictions that are in place we are unable to hold these evenings in school as we normally do. These evenings will be replaced by power point presentations

Wednesday 26 August 2020	S3 Course Structure	6.30 – 7.15pm* - Now by Power Point
Wednesday 26 August 2020	S4 Course Structure	7.30 – 8.15pm* Now by Power Point
Thursday 27 August 2020	S5 Course Structure	7.00 – 7.45pm* Now by Power Point
Monday 31 August 2020	S6 Post-School Planning Evening	7.00 – 8.00pm* Now by Power Point
Thursday 10 Sep 2020	S1 Welcome Evening	7.00 – 8.00pm* Now by Power Point

The Power point presentations will be sent out to parents before 3 September. If you have any questions after viewing please send these to

[coursechoice@boroughmuir.edin.sch.uk](mailto:coursechoice@boroughmuir.edin.sch.uk)

We will use these to create a “frequently asked questions” document which we can then share on our website.

### **Tracking and Reporting**

The first set of tracking reports will be issued week beginning 28<sup>th</sup> September for S2,4,5,6 pupils. S3 and S1 pupils will be issue the week beginning 2<sup>nd</sup> November. The format of the tracking reports will be similar to the previous two years but there will be some changes which will be communicated to you nearer the time. We plan to track all year groups on three occasions during the year and you will also receive written comments based around each subject.

### **S6 Individual photos**

The photographer from Tempest will be in school on Thursday 3 September to take S6 individual photographs. Times for each registration class will be in the bulletin.

### **Transport to school - Buses**

Please can all parents and carers ensure all children and young people have masks each day if they are using public transport. Your support in reinforcing the importance of pupils wearing masks whilst getting on the buses and for the duration of the journey is appreciated.

### **Timetable, Curriculum and Course Choices**

All year groups have now followed their full timetable for over a week. The exception to this is with S6 Study classes and these pupils are asked to work at home during Period 1 or Period 2 if they do not have a timetabled class. We are keeping this under review. We have also been undertaking some re-coursing of pupils and any further requests should be directed to the relevant Pupil Support Leader or Depute Head Teacher as soon as possible and by Fri 28<sup>th</sup> August at the latest. S2 pupils will be choosing their Enrichment class options this week.

### **L&T Update**

A reminder that pupils should be bringing pens, pencils, a ruler and a calculator this is helpful as the sharing of equipment is not allowed under the guidelines.

**MANY PUPILS HAVE YET TO RETURN TEXTBOOKS FROM LAST YEARS COURSES.**

**IF YOU HAVE A TEXT BOOK TO RETURN PLEASE DO SO ASAP.**

**THE SCHOOL IS MISSING THOUSANDS OF POUNDS WORTH OF TEXT BOOKS THAT WE DESPERATELY NEED BACK!**

### **PE**

The PE department currently have no access to our indoor spaces and changing rooms. All PE classes will take place outdoors on our MUGA, in the playground or at Meggetland. We ask that all pupils attend school wearing sports kit on the days they have PE. We also advise all pupils to bring a spare change of shoes, socks and a waterproof jacket incase it is raining. We will keep pupils and parents/carers updated with any changes through the school bulletin and twitter account (@boroughmuirPE).

### **Expressive Arts**

#### **Music**

##### **BGE classes**

We will be starting practical work next week which we are very excited about! If pupils have their own headphones for the keyboard, could they please bring them in. If pupils in S2 - S3 are wishing to practise guitar or bass guitar, they should bring in their own instrument to school. Please ensure the instrument is cleaned before bringing into school and they are welcome to leave this in the Music department at the start of the day.

##### **S4 - 6 Music**

Please bring in your own guitars or bass guitars for practical lessons as much as possible.

##### **IMS Update**

We are still awaiting confirmation of when instructors will be returning to Boroughmuir. If you are receiving IMS lessons, please check your school email as instructors will be contacting you and continue to check Teams for further information. If you have any questions, please ask a member of the Music department.

##### **Drama**

The Drama department is working hard to ensure the subject can be taught in the school in a safe way, utilising space within the school to allow us to maintain distancing.

As the year progresses, we will encourage pupils to bring items from home to use as costume / props. Items which the department have which can be wiped down will be used but we do not

intend to use the costume store at this time. Pupils and parents support and understanding at this time is appreciated.

### **Media:**

We will be studying the Teen film in National 5 Media with 'Clueless' and 'Juno'. These are rich texts that will follow on from the pupils S3 course where they looked at Teen TV Dramas. Higher will be looking at the gangster genre focussing on 'Goodfellas'. The Higher pupils must gain parental permission for this text so please make sure they return the slip to me as soon as possible.

New Teams will be set up in the next week but, at the moment, the S3/Nat 5/Higher pupils have been asked to bring in a lever-arch file that can be stored in the Media classroom. Please get in contact with Miss Dunlop in the Media department if you have any questions.

### **Modern Languages**

If you have any Modern Languages' textbooks from last year (or previous years!) at home, please return them as soon as possible. They are needed for new classes.

### **Business Education/Computing Science**

Pupils are being asked to clean down workstation, keyboard and mouse as soon as they enter the classroom and sanitise hands. This will allow us to carry out practical work on the computer. We now have software that allows us to share files, share teacher screen and take control of each pupil's computer to demonstrate teaching and learning points rather than having to sit amongst pupils. As per our normal learning and teaching arrangements in the faculty, all learning resources and tasks are available in OneNote and Teams.

### **Health and Food Technology**

It is fantastic to be back and we are very much enjoying working with our young people again. As a faculty we were incredibly impressed with the engagement of our classes in our digital classrooms, the work was outstanding !

We have all learnt a great deal over the last few months and we will be embedding the use of teams and office 365 into our learning and teaching practice. In terms of delivering practical work for HFTT we are waiting for guidance on how to deliver these within the current climate – rest assured we are using all our skills and technology to enhance learning in this area and we would encourage all young people to use opportunities at home to help prepare meals or cook meals for their family, all our recipe books are available on our webpage and again we were very impressed with the photographs that were shared during lockdown- keep them coming! S1 and S2 are exploring technological skills and HWB and are making a hand sewn face covering to use or to make as a gift. Certificate classes across the faculty are enhancing their knowledge and understanding of core topics, assignment and question paper techniques . HWB rota classes are embarking on new challenges and curriculum with the onus very much on them leading learning, strands of HWB and creating a virtual P7 transition using digital technology, we are pleased to still be delivering The Youth Philanthropy Award in S3 which is a fantastic opportunity to work with charities for a considerable prize. Please get in touch if you have any questions Miss Mitchelmore CL HFTT, HWB & RMPS.

## Maths

The maths department are:-

- enjoying meeting our classes in person after getting to know them on line in May and June
- delivering our courses on schedule as normal
- using Teams along with classroom teaching to distribute teaching resources where we can
- working on ways to give feedback to pupils in class with 2m adult – pupil distancing – we need to find new approaches
- using Assignments in Teams with senior classes to give individual feedback to pupils
- planning to issue textbooks to all Nat 5, Higher and AH pupils once we have the books returned and quarantined from last session – the return of books from last session is taking longer than usual
- planning to have an S1 Maths Test on Mon 31 August to help with the organisation of Maths sets with quarantining of papers for health & safety

## 11<sup>th</sup> August 2020

### **REMINDER S1-3 Return tomorrow / S4,5,6 on Thursday**

#### **Wednesday 12<sup>th</sup> August – only S1-3**

Year Gp	Start time	Notes
S1	8.32am	Go straight to register class. Registration lasts until 9.40. <b>Timetables will be issued</b> and Health and Safety protocols will be highlighted.
S2	9.00am	
S3	9.00am	
S4,5,6 – No School	No School	No School. Stay at home today

#### **Thursday 13<sup>th</sup> August – all pupils**

Year Gp	Start time	Notes
S1	8.32am	Go straight to register class. Registration lasts until 9.40
S2		
S3		
S4,5,6 – first day back	8.32am	Go straight to register class. Registration lasts until 9.40. <b>Timetables will be issued</b> and Health and Safety protocols will be highlighted.

#### **Friday 14<sup>th</sup> August onwards....all pupils/ normal day**

Year Gp	Start time	Notes
		Registration back to normal timing 8.32 – 8.45.

S1-6	8.32am	School days now back to normal timings.
------	--------	---

### **H&S issues**

To reduce time spent at the start and end of lessons, we are asking pupils if possible to bring their own hand sanitizer.

We have a one door entry to the school and a way system in school corridors. Pupils should move round corridors in a clockwise direction. Stairs are marked as either up or down and again this should be adhered to at all times.

### **Masks**

Although the wearing of masks is not compulsory in schools there are times when pupils and teachers may feel more comfortable wearing one. It is therefore a good idea for pupils to carry a mask with them.

### **PE Classes**

All PE will have to take place outside. We are not allowed to use changing rooms so if required you may come to school in PE kit the days you have PE.

To facilitate outdoor PE we will be using our own outdoor pitch but will require many more spaces such as Harrison Park, Bruntsfield Links etc.

Meggetland which is operated by Edinburgh Leisure, is currently closed. As soon as it opens we will be able to make use of the outdoor spaces there.

If it is raining outdoor PE will still go ahead so carrying a waterproof would be a good idea.

#### **Wed 12<sup>th</sup> Aug (PE)**

S1 – 1V2, 1W2, 1L2, 1H2, 1M2

S3 – Core PE for 3H1, 3L1, 3M1, 3V1, 3W1 and S3 National 4/5 PE

#### **Thurs 13<sup>th</sup> Aug (PE)**

S2 – 2H2, 2L2, 2M2

S3 - S3 National 4/5 PE

S4 – Core PE for 4H2, 4L2, 4M2, 4V2, 4W2 and S4 National 4/5 PE

S5/6 – PE Higher and Sports Leadership

S6 – PE Advanced Higher

### **School Catering**

Remember, catering is very limited, and we are suggesting that pupils should bring a packed lunch and if at all possible eat it outside in small groups.

The catering supervisor has advised that they will provide hot paninis, hot tubs of soup, pasta or rice, chicken burgers, vegetarian burgers and baked potatoes with various fillings.

There will drinks and home baking also.

The catering supervisor is also offering a pre-order service. Pupils can pre-order a day in advance and pay at time of ordering and the meal will be ready for collection the next day at lunchtime

## **Instrumental Music Service.**

There will be a phased approach for the recommencement of instrumental lessons with priority given to SQA candidates. Lessons for SQA candidates will start back from 17th August. The second phase will commence from 14th September which will include S1 - S3 and non NQ Senior Phase pupils. We will keep you updated over the coming weeks.

## **Library**

Pupils are currently unable to browse books to borrow from the school library. A click and collect/personal shopper service is being launched to allow pupils to borrow books from the school library. Pupils can also use Edinburgh Libraries Overdrive service to access e- and audiobooks. You can sign up to Edinburgh City Libraries: <https://yourlibrary.edinburgh.gov.uk/web/arena/join-the-library>. Any books that need to be returned should be dropped off outside the library. All returned books will be quarantined for 72 hours before being reissued to another pupil.

## **Art and Design & Engineering**

Could **all** pupils please remember to bring their own **pencil, rubber and ruler** to Art & Design and Design & Engineering classes this week. Pupils should also bring their folders, sketchbooks and textbooks to class too, along with work completed at home during lockdown. Indeed it is essential that pupils bring their own classroom materials to all classes

## **COLLEGE UPDATE for S5 & S6 Pupils Undertaking College Courses**

The college are continuing to follow Scottish Government guidance for colleges on COVID-19 and confirm that SCP and FA courses will be delivered **online** for the first Semester, commencing 8<sup>th</sup> September. The college are closely monitoring the situation and hope to be in a position to bring SCP (schools college partnership) and FA (foundation apprenticeship) students to college for face to face teaching from **January 2021** if it is safe to do so.

The SCP programme has been revised to provide alternative options, where possible, for practical courses which require face to face teaching and cannot be delivered.

**In order to help us with capacity in school can you please let us know if your son/daughter is able to undertake this learning at home on a Tuesday and Thursday afternoon. For those pupils who do not have computer access at home we will endeavour to provide this.**

SCP/FA Online Induction Tue 25th & Thu 27th August and Tue 1st & Thu 3<sup>rd</sup> Sept 1.30-4pm

A two-week induction programme has been developed by the college to prepare pupils for on-line learning. The induction is mandatory for all SCP and FA pupils who have a confirmed offer.

Pupils will require access to a PC & internet. The induction will be delivered via the college online learning platform, 'Moodle', and Microsoft Teams.

The induction will provide support with development of digital skills and will familiarise pupils with their course content & study requirements as well as allowing them to meet their tutors and engage with their college group. Pupils will be provided with an electronic SCP guide and instruction sessions will be timetabled to introduce and familiarise pupils with 'Moodle' and Microsoft Teams to enable them to undertake their studies safely online. SCP co-ordinators will timetable sessions with pupil groups at the start and end of each induction session to provide support and answer questions.

Mr Dempster. Head Teacher, 11<sup>th</sup> August 2020

## 6<sup>th</sup> August 2020

I hope you all had a good summer break and are looking forward to school re-opening **from** Wednesday August 12<sup>th</sup>.

We are keen to get all our pupils back to school as quickly but as safely as possible. This document only gives a brief overview of the main issues to get us back to school safely. More information is hosted in the links below and they will be updated regularly as information is updated.

We will of course continue to provide parents, pupils and staff with regular updates of important information via Groupcall, our website, TEAMS and email.

### **Useful Links**

We have updated the link on the front page of our website. It now reads:-

[For the latest information on \*\*A Safe Return to School\*\* please click here.](#)

The City of Edinburgh Information for Returning to School in August (including FAQs for Parents) is here and is also on our website behind the front page.

<https://www.edinburgh.gov.uk/schools-learning/returning-school-august-2020/1>

if you are interested in taking part here is a link to the COVID-19 symptom study. It's a survey supported by the City of Edinburgh and is run by several UK universities, collecting information from the public to map the spread of the illness and correlate symptoms with it.

<https://covid.joinzoe.com/>

### **Health and safety**

*At this time, it is particularly important that If your child feels unwell or display any of the symptoms of Covid-19 that you do not send them to school.*

### **Effective Infection Control**

Government advice is that school pupils do not need to wear face masks (unless they have a medical reason to do so or specifically want to)

Pupils and staff are asked to observe regular hand washing protocols as the best way of minimising the risk of spreading infection. To assist with this hand sanitiser dispensers will be placed around the school and signage encouraging handwashing will be on display

### **Social Distancing**

The governments advice for the 100% return of pupils to school is that pupils do not require to observe social distancing with each other. However, pupils will be asked to adhere to social distancing with adults and a one-way system will be in operation in the school to support this. Appropriate signage is in place to ensure that the system is easy to follow. Staff must themselves ensure for their own personal safety and that they apply a 2-metre distance with other adults and pupils where possible.

### **Enhanced Cleaning Regime**

The school has and will be extensively cleaned using a combination of electrostatic cleaning and regular surface cleaning, involving the use of Milton bleach. Edinburgh Scientific Services has approved electrostatic cleaning (known as fogging) which provides a dry negative charged chemical that bonds around surfaces. The chemical used releases free oxygen radicals that attacks, for example, viral membrane. This has been carried out once already and will be carried out again in 2 weeks' time.

### **Pupil Return to School - Staggered start**

#### **Wednesday 12<sup>th</sup> August – only S1-3**

Year Gp	Start time	Notes
S1	8.32am	Go straight to register class. Registration lasts until 9.40. Timetables will be issued and Health an Safety protocols will be highlighted.
S2	9.00am	
S3	9.00am	
S4,5,6 – No School	No School	No School. Stay at home today

#### **Thursday 13<sup>th</sup> August – all pupils**

Year Gp	Start time	Notes
S1	8.32am	Go straight to register class. Registration lasts until 9.40
S2		
S3		
S4,5,6 – first day back	8.32am	Go straight to register class. Registration lasts until 9.40. Timetables will be issued and Health an Safety protocols will be highlighted.

#### **Friday 14<sup>th</sup> August onwards....all pupils/ normal day**

Year Gp	Start time	Notes
---------	------------	-------



S1-6	8.32am	Registration back to normal timing 8.32 – 8.45. School days now back to normal timings.
------	--------	--

### **Register Teacher list**

This is on our website and is also at the end of this document.

### **Lateness to school**

We understand that there may be capacity issues with buses. We also want to encourage pupils to arrive over an extended period of time.

We will not be marking any pupils late during registration in the first week or so of term until we see how issues with buses are playing out. Pupils should however be in class for 8.45 if at all possible.

### **Entry / Exit to school**

The doors at the front of the school will be identified as an 'IN' door and an 'OUT' door. This will assist with social distancing and tie in with the one-way system.

### **No assemblies**

As large groups are to be avoided there will be no assemblies until further notice. Pupils will go straight to registration classes on arrival at school.

### **No extra curricular**

There will be no extra-curricular activities or clubs for the first couple of weeks. We will review this as soon as we can.

### **Getting to school on public transport**

The Scottish Government's current position (16 July) is that, where public transport (including buses, taxi, trams, subway, trains, ferries and air) is required for school aged children to attend school, the general advice and guidance from the Government and Transport Scotland should be followed. This currently includes the mandatory use of face coverings and physical distancing where possible.

### **PE buses**

The Scottish Government has indicated (16 July) that dedicated school transport should be regarded as an extension of the school estate and physical distancing measures between pupils are not necessary (subject to continued low levels of infection within Scotland). The Scottish Government recognises that school transport will involve mixed age groups of pupils but still considers the risk of transmission to be acceptably low when mitigations are in place.

### **If you do not want your child to return to school**

Some parents may want their child to continue to learn from home. You can find out more about home education here.

<https://www.edinburgh.gov.uk/schools-learning/home-education/1>

### **Lunches and extended break and extended lunchtime**

There will be a limited 'grab and go' menu (no hot lunches) so we are recommending that pupils bring a packed lunch for the first few days until we see how this is working.

Pupils will be encouraged to disperse and eat lunch outside.

In bad weather we will open other areas of the school like the assembly hall and some classrooms.

S2 – 6 pupils will of course be able to leave the building as normal at break and lunch but would of course need to wear a face mask in shops. ( S1 cannot leave the school grounds until after Oct break)

To avoid crowding;

Pupils in S4-6 will be released for break at 10.30 (5 minutes before junior pupils).

Pupils in S1-3 will be released for lunch at 12.40 (10 minutes before senior pupils)

### **School Dress Code**

There is no specific guidance around school dress code. It is our sense that pupils feel that an important part of coming back to school is the dress code and as such we are asking all pupils to wear dress code as normal.

### **No S6 study classes**

There will be no S6 study classes for the first 2 weeks. S6 with study P1 or P2 should arrive at school in time for first class and not before. This is to reduce unnecessary numbers in the school. We will review this after 2 weeks.

### **PE Classes**

It is planned that PE will take place as near normal as possible.

We have been advised by the government that the use of curricular PE buses is also acceptable for pupils.

So that the right pupils arrive at school with kit here are the classes that have PE on the first 2 days.

#### **Wed 12<sup>th</sup> Aug (PE)**

S1 – 1V2, 1W2, 1L2, 1H2, 1M2

S3 – Core PE for 3H1, 3L1, 3M1, 3V1, 3W1 and S3 National 4/5 PE

#### **Thurs 13<sup>th</sup> Aug (PE)**

S2 – 2H2, 2L2, 2M2

S3 - S3 National 4/5 PE

S4 – Core PE for 4H2, 4L2, 4M2, 4V2, 4W2 and S4 National 4/5 PE

S5/6 – PE Higher and Sports Leadership

S6 – PE Advanced Higher

### **Practical Subjects**

It is hoped that wherever possible pupils will be able to engage in practical work.

Where pupils do not have to share equipment, this will be easier. The equipment will need to be cleaned by the pupils after use.

If pupils do need to share equipment this may be more difficult.  
 WE are awaiting further advice around this and will of course adhere strictly to it.

### Classroom organisation / cleaning

Where possible pupils will be kept apart when in classes and if possible and appropriate pupil desks will be arranged to face the front rather in a group style with pupils facing each other.  
 In some subjects where appropriate, pupils may be asked to wipe down keyboards/ desks with wipes and sanitizer at the end of the lesson as well as any other resources used.

### Register Teacher List

Class	Teacher	Room
1H1	P Hastings	01.05
1H2	A Larter	LG.05
1L1	B Nelson	01.06
1L2	E Fletcher	03.22
1M1	M Asif	02.07
1M2	S Lees	03.16
1V1	F Kastelein	03.01
1V2	L Bloomer	01.13
1W1	K Dunlop	G.08
1W2	P Williams	03.06
2H1	L Dighton	02.08
2H2	S Hamilton	03.17
2L1	S Anderson	01.11
2L2	L MacPherson	01.10
2M1	S Mulligan	02.11
2M2	K Kingsbury (Friday – S Campbell)	G.03
2V1	A Robb	02.03
2V2	R Yates	01.09
2W1	G Ayemere Odeh	01.02
2W2	Alex Gilmore	LG.10
3B2	P McGinley (Tuesday – S McFarlane)	LG.02
3H1	J Crawford	G.05
3H2	E Craig (Thurs & Friday – H Henderson)	03.10
3L1	D Dowsett	03.18
3L2	S Forbes	02.13
3M1	L Vines	01.07
3M2	F Boyd	02.15
3V1	D Graham	LG:11
3V2	S O’Hagan	LG.04
3W1	J Walker	03.09
3W2	S Das	02.04

Class	Teacher	Room
4H1	J Davidson	LG.03
4H2	H Turner ( Friday – L Richard)	03.12
4L1	L Boag	02.10
4L2	J O’Thy	LG.09
4M1	B Stirling (Friday – D MacDougall)	03.08
4M2	L Mackintosh (Friday – D Cogan)	02.01
4V1	M Church	02.16
4V2	A Dunn	03.14
4W1	L Wilson	03.21
4W2	M Lianantonakis	03.07
5H1	J Bellamy ( Thurs & Friday – C Spinks)	01.08
5H2	A Igoe	02.06
5L1	J Ross	LG.07
5L2	P Dobson	LG.06
5M1	A Schiavone	01.04
5M2	M Henderson (Friday – C Duguid)	01.15
5V1	T Williams	01.12
5V2	C Gray	01.03
5W1	J Webster	G.01
5W2	J MacPherson	03.02
6R1	G MacDonald	LG.08
6R2	J Compston	02.02
6R3	R Stein	03.20
6R4	S Macdonald	03.11
6R5	A Stevenson	01.12
6R6	P Struthers	03.05

Mr Dempster

Head Teacher, 6<sup>th</sup> August 2020

